

PAA816Bo01

Polyclonal Antibody to Alpha-1-Acid Glycoprotein (a1AGP)

Organism Species: *Bos taurus*; Bovine (Cattle)

Instruction manual

FOR RESEARCH USE ONLY

NOT FOR USE IN CLINICAL DIAGNOSTIC PROCEDURES

13th Edition (Revised in Aug, 2023)

[PROPERTIES]

Source: Polyclonal antibody preparation

Host: Rabbit

Purification: Antigen-specific affinity chromatography followed by Protein A affinity chromatography

Traits: Liquid

Concentration: 0.5mg/ml

UOM: 100ul

Cross Reactivity: N/A

Applications: WB

[IMMUNOGEN]

Immunogen: Recombinant a1AGP (Thr33~Arg195) expressed in *E.coli*

Accession No.: RPA816Bo01

[APPLICATIONS]

Western blotting: 0.01-2µg/mL;

Optimal working dilutions must be determined by end user.

[FORMULATION]

Form & Buffer: Supplied as solution form in 0.01M PBS, pH7.4, containing 0.05% Proclin-300, 50% glycerol.

[STORAGE AND STABILITY]

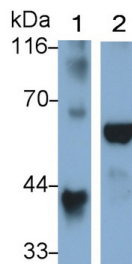
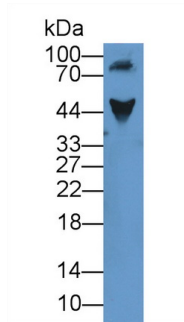
Storage: Avoid repeated freeze/thaw cycles.

Store at 4°C for frequent use.

Aliquot and store at -20°C for 24 months.

Stability Test: The thermal stability is described by the loss rate. The loss rate was determined by accelerated thermal degradation test, that is, incubate the protein at 37°C for 48h, and no obvious degradation and precipitation were observed. The loss rate is less than 5% within the expiration date under appropriate storage condition.

[IDENTIFICATION]



Western Blot; Sample: Bovine Serum Western Blot; Sample: Lane1: Bovine

Primary Ab: 2µg/mL Rabbit Anti-Bovine Plasma; Lane2: Bovine Bladder lysate

a1AGP Antibody

Primary Ab: 0.2µg/ml Rabbit Anti-

Second Ab: 0.2µg/mL HRP-Linked

Bovine a1AGP Antibody

Caprine Anti-Rabbit IgG Polyclonal

Second Ab: 0.2µg/mL HRP-Linked

Antibody

Caprine Anti-Rabbit IgG Polyclonal

(Catalog: SAA544Rb19)

Antibody

(Catalog: SAA544Rb19)

[IMPORTANT NOTE]

The kit is designed for research use only, we will not be responsible for any issue if the kit was used in clinical diagnostic or any other procedures.