

**PAS085Mi08**

**Polyclonal Antibody to Angiotensin 1-7 (Ang1-7)**

**Organism Species: *Homo sapiens* (Human), *Mus musculus* (Mouse), *Rattus norvegicus* (Rat), *Canis familiaris*; Canine (Dog), *Ovis aries*; Ovine (Sheep), *Equus caballus*; Equine (Horse)**

***Instruction manual***

FOR RESEARCH USE ONLY

NOT FOR USE IN CLINICAL DIAGNOSTIC PROCEDURES

---

13th Edition (Revised in Aug, 2023)

## **[ PROPERTIES ]**

**Source:** Polyclonal antibody preparation

**Host:** Rabbit

**Purification:** Antigen-specific affinity chromatography followed by Protein A affinity chromatography

**Traits:** Liquid

**Concentration:** 0.5mg/mL

**UOM:** 100 $\mu$ L

**Cross Reactivity:** Human;Mouse;Rat;Canine;Ovine;Equine

**Applications:** ELISA, CLIA. / IHC-Fr, ICC, IP (predicted).

## **[ IMMUNOGEN ]**

**Immunogen:** Recombinant Ang1-7 (Asp34-Pro40) expressed in

**Accession No.:** CPS085Mi21

## **[ APPLICATIONS ]**

Immunohistochemistry: 5-20 $\mu$ g/mL;

Immunocytochemistry: 5-20 $\mu$ g/mL;

Optimal working dilutions must be determined by end user.

## **[ FORMULATION ]**

**Form & Buffer:** Supplied as solution form in 0.01M PBS, pH7.4, containing 0.05% Proclin-300, 50% glycerol.

## **[ STORAGE AND STABILITY ]**

**Storage:** Avoid repeated freeze/thaw cycles.

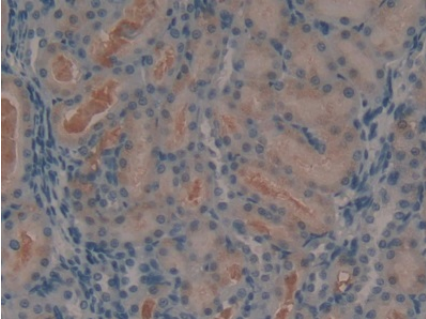
Store at 4°C for frequent use.

Aliquot and store at -20°C for 24 months.

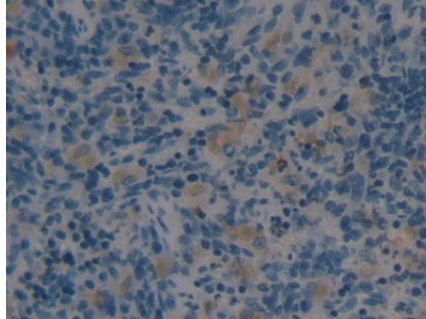
**Stability Test:** The thermal stability is described by the loss rate. The loss rate was determined by accelerated thermal degradation test, that is, incubate the protein at 37°C for 48h, and no obvious degradation and precipitation were observed. The loss rate is less than 5% within the

expiration date under appropriate storage condition.

**[ IDENTIFICATION ]**



DAB staining on IHC-P; Samples: Rat  
Kidney Tissue; Primary Ab: 5µg/ml  
Rabbit Anti-Multi-species Ang1-7  
Antibody Second Ab: 2µg/mL HRP-  
Linked Caprine Anti-Rabbit IgG  
Polyclonal Antibody (Catalog:  
SAA544Rb19)



DAB staining on IHC-P;  
Samples: Rat Spleen Tissue;  
Primary Ab: 5µg/ml Rabbit Anti-Multi-  
species Ang1-7 Antibody  
Second Ab: 2µg/mL HRP-Linked  
Caprine Anti-Rabbit IgG Polyclonal  
Antibody  
(Catalog: SAA544Rb19)

**[ IMPORTANT NOTE ]**

The kit is designed for research use only, we will not be responsible for any issue if the kit was used in clinical diagnostic or any other procedures.