

**PAE787Rb51**

**Polyclonal Antibody to Annexin A1 (ANXA1)**

**Organism Species: *Oryctolagus cuniculus* (Rabbit)**

***Instruction manual***

FOR RESEARCH USE ONLY

NOT FOR USE IN CLINICAL DIAGNOSTIC PROCEDURES

---

12th Edition (Revised in Aug, 2016)

### **[ PROPERTIES ]**

**Source:** Polyclonal antibody preparation

**Host:** Guinea pig

**Purification:** Antigen-specific affinity chromatography followed by Protein A affinity chromatography

**Traits:** Liquid

**Concentration:** 0.5mg/ml

**UOM:** 100µl

**Cross Reactivity:** Human;Mouse;Rat

**Applications:** WB; IHC; ICC; IP.

### **[ IMMUNOGEN ]**

**Immunogen:** Recombinant ANXA1 (Met1~Asn346) expressed in *E.coli*

**Accession No.:** RPE787Rb02

### **[ APPLICATIONS ]**

Western blotting: 0.5-2µg/mL;

Immunohistochemistry: 5-20µg/mL;

Immunocytochemistry: 5-20µg/mL;

Optimal working dilutions must be determined by end user.

### **[ FORMULATION ]**

**Form & Buffer:** Supplied as solution form in 0.01M PBS, pH7.4, containing 0.05% Proclin-300, 50% glycerol.

### **[ STORAGE AND STABILITY ]**

**Storage:** Avoid repeated freeze/thaw cycles.

Store at 4°C for frequent use.

Aliquot and store at -20°C for 24 months.

**Stability Test:** The thermal stability is described by the loss rate. The loss rate was determined by accelerated thermal degradation test, that is, incubate the protein at 37°C for 48h, and no

obvious degradation and precipitation were observed. The loss rate is less than 5% within the expiration date under appropriate storage condition.

**[ IDENTIFICATION ]**

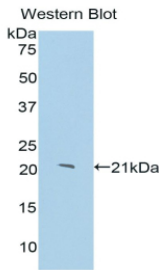
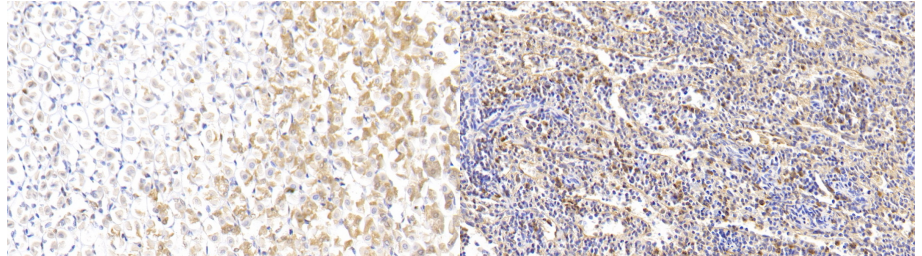
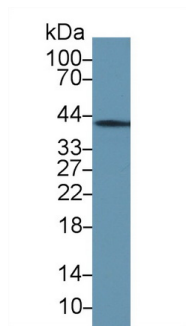


Figure. Western Blot; Sample: Recombinant ANXA1, Rabbit.

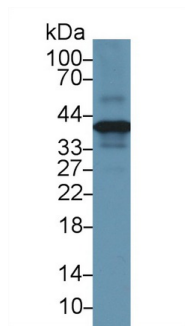


DAB staining on IHC-P; Samples: Rabbit Stomach Tissue; Primary Ab: 20?g/ml Cavia Anti-Rabbit ANXA1 Antibody Second Ab: 2µg/mL HRP-Linked Rabbit Anti-Cavia IgG Polyclonal Antibody (Catalog: SAA544Gu09)

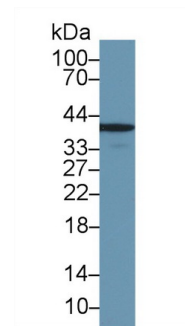
DAB staining on IHC-P; Samples: Rabbit Spleen Tissue; Primary Ab: 20?g/ml Cavia Anti-Rabbit ANXA1 Antibody Second Ab: 2µg/mL HRP-Linked Rabbit Anti-Cavia IgG Polyclonal Antibody (Catalog: SAA544Gu09)



Western Blot; Sample: Rabbit Liver lysate; Primary Ab: 1µg/ml Cavia Anti-Rabbit ANXA1 Antibody Second Ab: 0.2µg/mL HRP-Linked Rabbit Anti-Cavia IgG Polyclonal Antibody (Catalog: SAA544Gu09)



Western Blot; Sample: Rabbit Lung lysate; Primary Ab: 1µg/ml Cavia Anti-Rabbit ANXA1 Antibody Second Ab: 0.2µg/mL HRP-Linked Rabbit Anti-Cavia IgG Polyclonal Antibody (Catalog: SAA544Gu09)



Western Blot; Sample: Rabbit Small intestine lysate; Primary Ab: 1µg/ml Cavia Anti-Rabbit ANXA1 Antibody Second Ab: 0.2µg/mL HRP-Linked Rabbit Anti-Cavia IgG Polyclonal Antibody (Catalog: SAA544Gu09)

**[ IMPORTANT NOTE ]**

The kit is designed for research use only, we will not be responsible for any issue if the kit was

used in clinical diagnostic or any other procedures.