

**PAA704Mu01**

**Polyclonal Antibody to Apolipoprotein E (APOE)**

**Organism Species: *Mus musculus* (Mouse)**

***Instruction manual***

FOR RESEARCH USE ONLY

NOT FOR USE IN CLINICAL DIAGNOSTIC PROCEDURES

---

13th Edition (Revised in Aug, 2023)

### [ **PROPERTIES** ]

**Source:** Polyclonal antibody preparation

**Host:** Rabbit

**Purification:** Antigen-specific affinity chromatography followed by Protein A affinity chromatography

**Traits:** Liquid

**Concentration:** 0.5mg/mL

**UOM:** 20 $\mu$ L

**Cross Reactivity:** Rat

**Applications:** WB; IHC; ICC; IP.

### [ **IMMUNOGEN** ]

**Immunogen:** Recombinant APOE (Thr14~Lys167) expressed in *E.coli*

**Accession No.:** RPA704Mu01

### [ **APPLICATIONS** ]

Western blotting: 0.01-2 $\mu$ g/mL;

Immunohistochemistry: 5-20 $\mu$ g/mL;

Immunocytochemistry: 5-20 $\mu$ g/mL;

Optimal working dilutions must be determined by end user.

### [ **FORMULATION** ]

**Form & Buffer:** Supplied as solution form in 0.01M PBS, pH7.4, containing 0.05% Proclin-300, 50% glycerol.

### [ **STORAGE AND STABILITY** ]

**Storage:** Avoid repeated freeze/thaw cycles.

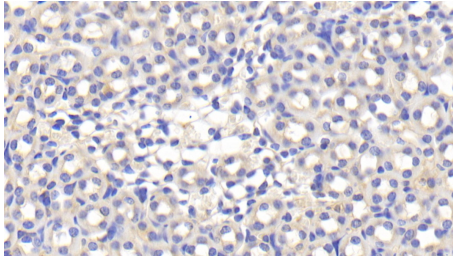
Store at 4°C for frequent use.

Aliquot and store at -20°C for 24 months.

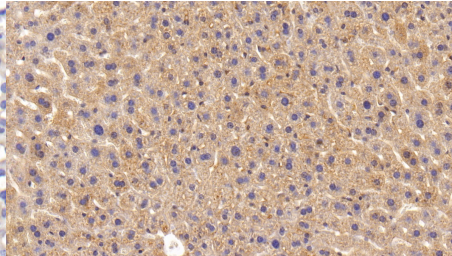
**Stability Test:** The thermal stability is described by the loss rate. The loss rate was determined by accelerated thermal degradation test, that is, incubate the protein at 37°C for 48h, and no

obvious degradation and precipitation were observed. The loss rate is less than 5% within the expiration date under appropriate storage condition.

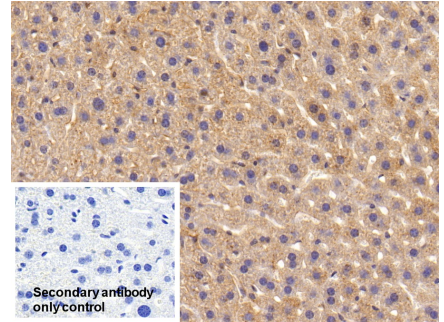
**[ IDENTIFICATION ]**



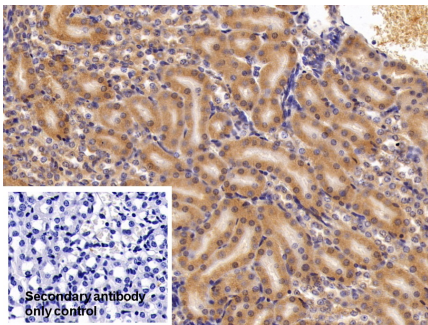
DAB staining on IHC-P; Samples: Mouse Kidney Tissue; Primary Ab: 20µg/ml Rabbit Anti-Mouse APOE Antibody Second Ab: 2µg/mL HRP-Linked Caprine Anti-Rabbit IgG Polyclonal Antibody (Catalog: SAA544Rb19)



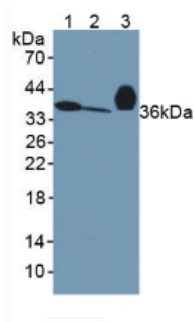
DAB staining on IHC-P; Sample: Mouse Liver Tissue; Primary Ab: 20µg/ml Rabbit Anti-Mouse APOE Antibody Second Ab: 2µg/mL HRP-Linked Caprine Anti-Rabbit IgG Polyclonal Antibody (Catalog: SAA544Rb19)



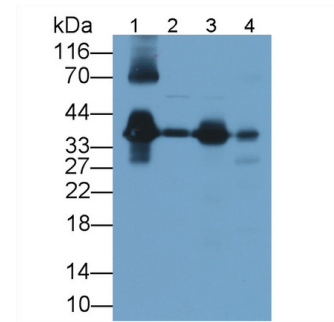
DAB staining on IHC-P; Sample: Mouse Liver Tissue Primary Ab: 20µg/ml Rabbit Anti-Mouse APOE Antibody Control: Used PBS instead of primary antibody Second Ab: 2µg/ml HRP-Linked Caprine Anti-Rabbit IgG Polyclonal Antibody (Catalog: SAA544Rb19)



DAB staining on IHC-P; Sample: Mouse Kidney Tissue Primary Ab: 20µg/ml Rabbit Anti-Mouse APOE Antibody Control: Used PBS instead of primary antibody Second Ab: 2µg/ml HRP-Linked



Western Blot; Sample: Lane1: Mouse Serum; Lane2: Mouse Liver lysate; Lane3: Rat Serum Primary Ab: 1µg/ml Rabbit Anti-Mouse APOE Antibody Second Ab: 0.2µg/mL HRP-Linked Caprine Anti-Rabbit IgG Polyclonal



Western Blot; Sample: Lane1: Mouse Serum; Lane2: Mouse Cerebrum lysate; Lane3: Mouse Liver lysate; Lane4: Mouse Lung lysate Primary Ab: 0.1µg/ml Rabbit Anti-Mouse APOE Antibody Second Ab: 0.2µg/mL HRP-Linked

Caprine Anti-Rabbit IgG Polyclonal  
Antibody  
(Catalog: SAA544Rb19)

Antibody  
(Catalog: SAA544Rb19)

Caprine Anti-Rabbit IgG Polyclonal  
Antibody  
(Catalog: SAA544Rb19)

**[ IMPORTANT NOTE ]**

The kit is designed for research use only, we will not be responsible for any issue if the kit was used in clinical diagnostic or any other procedures.