

PAA778Mu01

Polyclonal Antibody to B-Cell Leukemia/Lymphoma 2 (Bcl2)

Organism Species: *Mus musculus* (Mouse)

Instruction manual

FOR RESEARCH USE ONLY

NOT FOR USE IN CLINICAL DIAGNOSTIC PROCEDURES

13th Edition (Revised in Aug, 2023)

[**PROPERTIES**]

Source: Polyclonal antibody preparation

Host: Rabbit

Purification: Antigen-specific affinity chromatography followed by Protein A affinity chromatography

Traits: Liquid

Concentration: 0.5mg/mL

UOM: 100µL

Cross Reactivity: Human;Rat;Canine;Equine

Applications: WB; IHC; ICC/IF

[**IMMUNOGEN**]

Immunogen: Recombinant Bcl2 (Ala2~Asp208) expressed in *E.coli*

Accession No.: RPA778Mu01

[**APPLICATIONS**]

Western blotting: 0.01-5µg/mL;

Immunohistochemistry: 5-20µg/mL;

Immunocytochemistry: 5-20µg/mL;

Optimal working dilutions must be determined by end user.

[**FORMULATION**]

Form & Buffer: Supplied as solution form in 0.01M PBS, pH7.4, containing 0.05% Proclin-300, 50% glycerol.

[**STORAGE AND STABILITY**]

Storage: Avoid repeated freeze/thaw cycles.

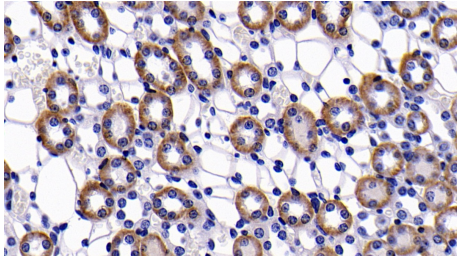
Store at 4°C for frequent use.

Aliquot and store at -20°C for 24 months.

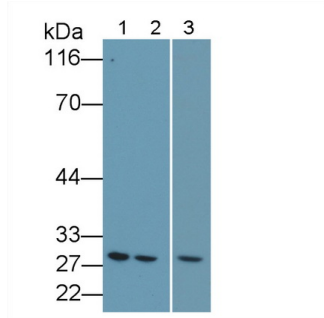
Stability Test: The thermal stability is described by the loss rate. The loss rate was determined by accelerated thermal degradation test, that is, incubate the protein at 37°C for 48h, and no

obvious degradation and precipitation were observed. The loss rate is less than 5% within the expiration date under appropriate storage condition.

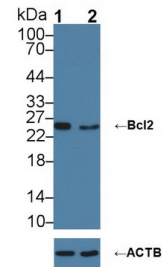
[IDENTIFICATION]



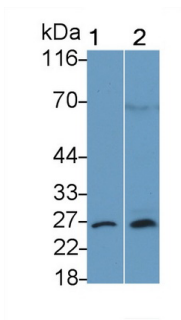
DAB staining on IHC-P; Samples:
 Mouse Kidney Tissue; Primary Ab:
 20µg/ml Rabbit Anti-Mouse Bcl2
 Antibody Second Ab: 2µg/mL HRP-
 Linked Caprine Anti-Rabbit IgG
 Polyclonal Antibody (Catalog:
 SAA544Rb19)



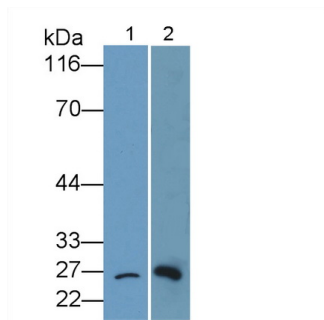
Western Blot; Sample: Lane1: Jurkat
 cell lysate; Lane2: U937 cell lysate;
 Lane3: Mouse Cerebrum lysate
 Primary Ab: 4µg/ml Rabbit Anti-Mouse
 Bcl2 Antibody
 Second Ab: 0.2µg/mL HRP-Linked
 Caprine Anti-Rabbit IgG Polyclonal
 Antibody
 (Catalog: SAA544Rb19)



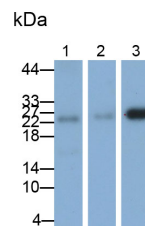
Knockout Varification:
 Lane 1: Wild-type HL-60 cell lysate;
 Lane 2: Bcl2 knockout HL-60 cell
 lysate;
 Predicted MW: 22,26kDa
 Observed MW: 26kDa
 Primary Ab: 5µg/ml Rabbit Anti-Mouse
 Bcl2 Antibody
 Second Ab: 0.2µg/mL HRP-Linked
 Caprine Anti-Rabbit IgG Polyclonal
 Antibody
 (Catalog: SAA544Rb19)



Western Blot; Sample: Lane1: Canine
 Cerebrum lysate; Lane2: Equine
 Spleen lysate
 Primary Ab: 4µg/ml Rabbit Anti-Mouse
 Bcl2 Antibody



Western Blot; Sample: Lane1: Canine
 Cerebrum lysate; Lane2: Rat Cerebrum Spleen
 lysate
 Primary Ab: 4µg/ml Rabbit Anti-Mouse
 Bcl2 Antibody

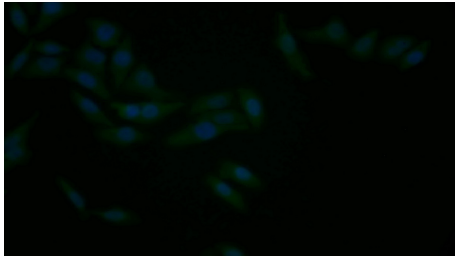


Western Blot; Samples: Lane1: Mouse
 Cerebrum lysate; Lane2: Mouse Cerebrum
 lysate; Lane3: Jurkat cell lysate;
 Primary Ab: 1µg/ml Rabbit Anti-Mouse
 Bcl2 Antibody

Second Ab: 0.2µg/mL HRP-Linked
Caprine Anti-Rabbit IgG Polyclonal
Antibody
(Catalog: SAA544Rb19)

Second Ab: 0.2µg/mL HRP-Linked
Caprine Anti-Rabbit IgG Polyclonal
Antibody
(Catalog: SAA544Rb19)

Second Ab: 0.2µg/ml HRP-Linked
Caprine Anti-Rabbit IgG Polyclonal
Antibody
(Catalog: SAA544Rb19)



FITC staining on IF;
Samples: Human HepG2 cell;
Primary Ab: 20µg/ml Rabbit Anti-Mouse
Bcl2 Antibody
Second Ab: 1.5µg/ml FITC-Linked
Caprine Anti-Rabbit IgG Polyclonal
Antibody
(Catalog: SAA544Rb18)

[**IMPORTANT NOTE**]

The kit is designed for research use only, we will not be responsible for any issue if the kit was used in clinical diagnostic or any other procedures.