

PAQ166Hu01

Polyclonal Antibody to Bcl2 Like Protein 11 (BCL2L11)

Organism Species: *Homo sapiens (Human)*

Instruction manual

FOR RESEARCH USE ONLY

NOT FOR USE IN CLINICAL DIAGNOSTIC PROCEDURES

13th Edition (Revised in Aug, 2023)

[PROPERTIES]

Source: Polyclonal antibody preparation

Host: Rabbit

Purification: Antigen-specific affinity chromatography followed by Protein A affinity chromatography

Traits: Liquid

Concentration: 0.5mg/ml

UOM: 100µl

Cross Reactivity: Mouse;Rat;Canine;Porcine

Applications: WB; IHC

[IMMUNOGEN]

Immunogen: Recombinant BCL2L11 (Ala2~Arg120 (Accession # O43521)) expressed in *E.coli*

Accession No.: RPQ166Hu01

[APPLICATIONS]

Western blotting: 0.01-2µg/mL;

Immunohistochemistry: 5-20µg/mL;

Optimal working dilutions must be determined by end user.

[FORMULATION]

Form & Buffer: Supplied as solution form in PBS, pH7.4, containing 0.02% NaN₃, 50% glycerol.

[STORAGE AND STABILITY]

Storage: Avoid repeated freeze/thaw cycles.

Store at 4°C for frequent use.

Aliquot and store at -20°C for 24 months.

Stability Test: The thermal stability is described by the loss rate. The loss rate was determined

by accelerated thermal degradation test, that is, incubate the protein at 37°C for 48h, and no obvious degradation and precipitation were observed. The loss rate is less than 5% within the expiration date under appropriate storage condition.

[IDENTIFICATION]

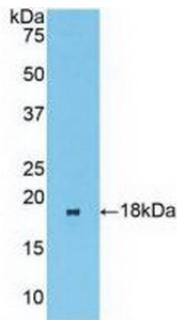
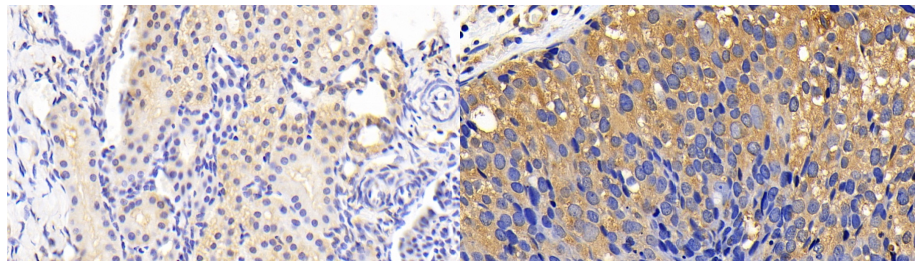
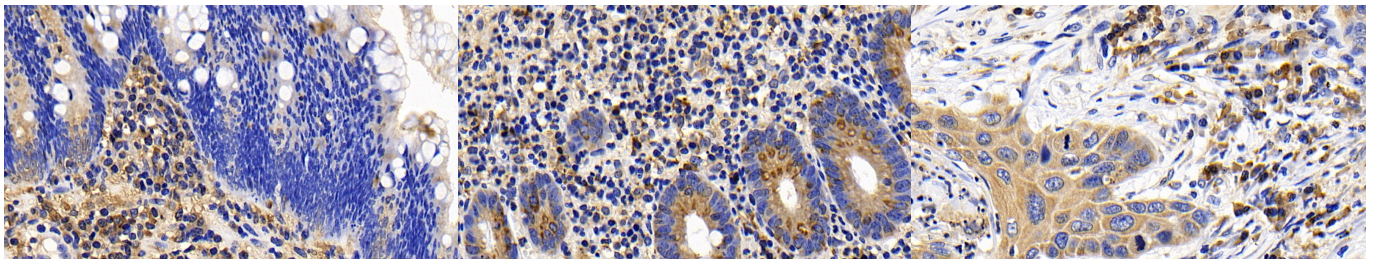


Figure. Western Blot; Sample: Recombinant BCL2L11, Human.



DAB staining on IHC-P; Samples: Human Kidney Tissue; Primary Ab: 20 µg/ml Rabbit Anti-Human BCL2L11 Antibody Second Ab: 2 µg/ml HRP-Linked Caprine Anti-Rabbit IgG Polyclonal Antibody (Catalog: SAA544Rb19)

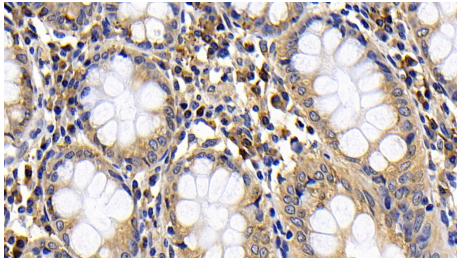
DAB staining on IHC-P; Samples: Human Breast cancer Tissue; Primary Ab: 20 µg/ml Rabbit Anti-Human BCL2L11 Antibody Second Ab: 2 µg/ml HRP-Linked Caprine Anti-Rabbit IgG Polyclonal Antibody (Catalog: SAA544Rb19)



DAB staining on IHC-P; Sample: Human Colorectal cancer Tissue; Primary Ab: 20 µg/ml Rabbit Anti-Human BCL2L11 Antibody Second Ab: 2 µg/ml HRP-Linked Caprine Anti-Rabbit IgG Polyclonal Antibody (Catalog: SAA544Rb19)

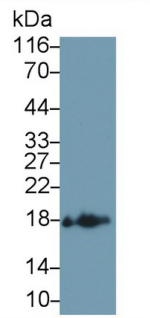
DAB staining on IHC-P; Sample: Human Appendix Tissue; Primary Ab: 20 µg/ml Rabbit Anti-Human BCL2L11 Antibody Second Ab: 2 µg/ml HRP-Linked Caprine Anti-Rabbit IgG Polyclonal Antibody (Catalog: SAA544Rb19)

DAB staining on IHC-P; Sample: Human Lung cancer Tissue; Primary Ab: 20 µg/ml Rabbit Anti-Human BCL2L11 Antibody Second Ab: 2 µg/ml HRP-Linked Caprine Anti-Rabbit IgG Polyclonal Antibody (Catalog: SAA544Rb19)

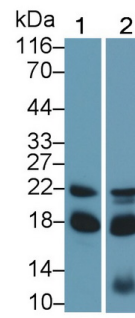


DAB staining on IHC-P;

Sample: Human Colon Tissue;
Primary Ab: 20ug/ml Rabbit Anti-Human BCL2L11 Antibody
Second Ab: 2µg/mL HRP-Linked Caprine Anti-Rabbit IgG Polyclonal Antibody
(Catalog: SAA544Rb19)



Western Blot; Sample: Canine Uterus lysate
Primary Ab: 0.5µg/ml Rabbit Anti-Human BCL2L11 Antibody
Second Ab: 0.2µg/mL HRP-Linked Caprine Anti-Rabbit IgG Polyclonal Antibody
(Catalog: SAA544Rb19)



Western Blot; Sample: Lane1: HL60 cell lysate; Lane2: Rat Uterus lysate
Primary Ab: 0.5µg/ml Rabbit Anti-Human BCL2L11 Antibody
Second Ab: 0.2µg/mL HRP-Linked Caprine Anti-Rabbit IgG Polyclonal Antibody
(Catalog: SAA544Rb19)

[IMPORTANT NOTE]

The kit is designed for research use only, we will not be responsible for any issue if the kit was used in clinical diagnostic or any other procedures.