

**PAA260Hu01**

**Polyclonal Antibody to Beta-2-Microglobulin (b2M)**

**Organism Species: *Homo sapiens (Human)***

***Instruction manual***

FOR RESEARCH USE ONLY

NOT FOR USE IN CLINICAL DIAGNOSTIC PROCEDURES

---

13th Edition (Revised in Aug, 2023)

### [ **PROPERTIES** ]

**Source:** Polyclonal antibody preparation

**Host:** Rabbit

**Purification:** Antigen-specific affinity chromatography followed by Protein A affinity chromatography

**Traits:** Liquid

**Concentration:** 0.3mg/ml

**UOM:** 100µl

**Cross Reactivity:** N/A

**Applications:** WB; IHC; ICC; IP.

### [ **IMMUNOGEN** ]

**Immunogen:** Recombinant b2M (Gln22~Met119) expressed in *E.coli*

**Accession No.:** RPA260Hu01

### [ **APPLICATIONS** ]

Western blotting: 0.01-2µg/mL;

Immunohistochemistry: 5-20µg/mL;

Immunocytochemistry: 5-20µg/mL;

Optimal working dilutions must be determined by end user.

### [ **FORMULATION** ]

**Form & Buffer:** Supplied as solution form in PBS, pH7.4, containing 0.02% NaN<sub>3</sub>, 50% glycerol.

### [ **STORAGE AND STABILITY** ]

**Storage:** Avoid repeated freeze/thaw cycles.

Store at 4°C for frequent use.

Aliquot and store at -20°C for 24 months.

**Stability Test:** The thermal stability is described by the loss rate. The loss rate was determined by accelerated thermal degradation test, that is, incubate the protein at 37°C for 48h, and no

obvious degradation and precipitation were observed. The loss rate is less than 5% within the expiration date under appropriate storage condition.

**[ IDENTIFICATION ]**

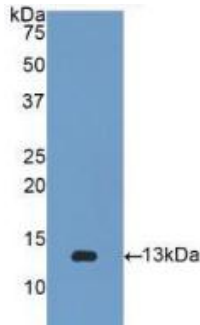
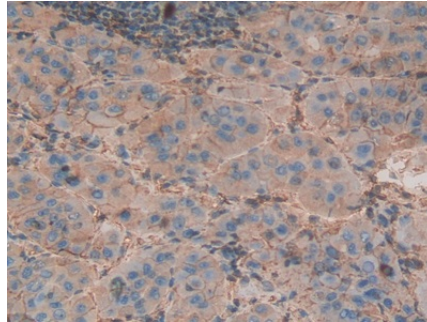
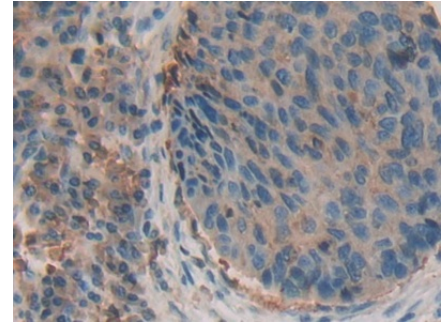


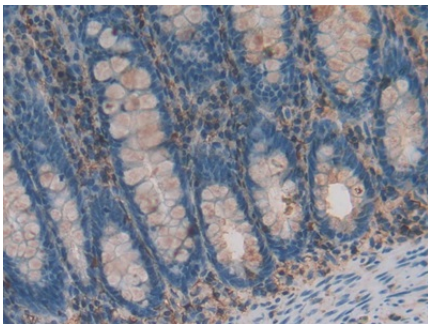
Figure. Western Blot; Sample:  
Recombinant b2M, Human.



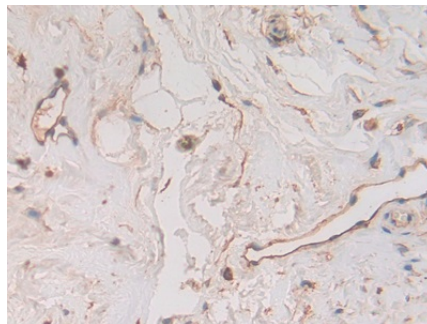
DAB staining on IHC-P;  
Samples: Human Liver cancer Tissue;  
Primary Ab: 20µg/ml Rabbit Anti-  
Human b2M Antibody  
Second Ab: 2µg/mL HRP-Linked  
Caprine Anti-Rabbit IgG Polyclonal  
Antibody  
(Catalog: SAA544Rb19)



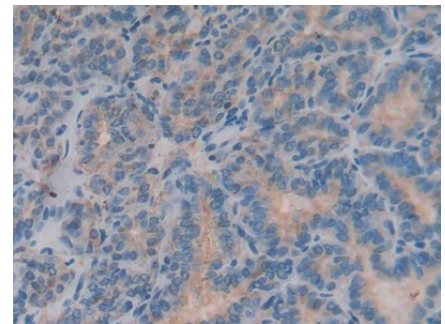
DAB staining on IHC-P;  
Samples: Human Esophagus cancer  
Tissue;  
Primary Ab: 20µg/ml Rabbit Anti-  
Human b2M Antibody  
Second Ab: 2µg/mL HRP-Linked  
Caprine Anti-Rabbit IgG Polyclonal  
Antibody  
(Catalog: SAA544Rb19)



DAB staining on IHC-P;  
Samples: Human Rectum Tissue;  
Primary Ab: 20µg/ml Rabbit Anti-  
Human b2M Antibody  
Second Ab: 2µg/mL HRP-Linked  
Caprine Anti-Rabbit IgG Polyclonal  
Antibody  
(Catalog: SAA544Rb19)

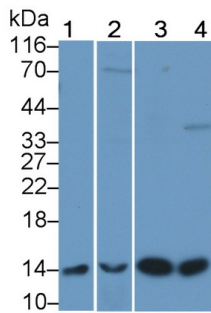


DAB staining on IHC-P;  
Samples: Human Breast cancer Tissue;  
Primary Ab: 20µg/ml Rabbit Anti-  
Human b2M Antibody  
Second Ab: 2µg/mL HRP-Linked  
Caprine Anti-Rabbit IgG Polyclonal  
Antibody  
(Catalog: SAA544Rb19)

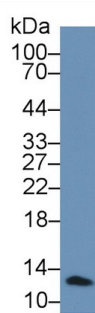


DAB staining on IHC-P;  
Samples: Human Thyroid cancer  
Tissue;  
Primary Ab: 20µg/ml Rabbit Anti-  
Human b2M Antibody  
Second Ab: 2µg/mL HRP-Linked  
Caprine Anti-Rabbit IgG Polyclonal  
Antibody

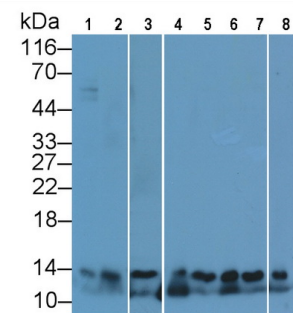
(Catalog: SAA544Rb19)



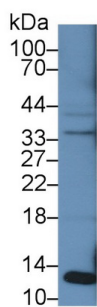
Western Blot; Sample: Lane1: Human Leukocyte lysate; Lane2: Mouse Liver lysate; Lane3: A431 cell lysate; Lane4: Raji cell lysate  
 Primary Ab: 1?g/ml Rabbit Anti-Human b2M Antibody  
 Second Ab: 0.2µg/mL HRP-Linked Caprine Anti-Rabbit IgG Polyclonal Antibody  
 (Catalog: SAA544Rb19)



Western Blot; Sample: Human Leukocyte lysate;  
 Primary Ab: 1µg/ml Rabbit Anti-Human b2M Antibody  
 Second Ab: 0.2µg/mL HRP-Linked Caprine Anti-Rabbit IgG Polyclonal Antibody  
 (Catalog: SAA544Rb19)



Western Blot; Sample: Lane1: Human Urine; Lane2: Human Leukocyte lysate; Lane3: Mouse Spleen lysate; Lane4: Mouse Liver lysate; Lane5: A431 cell lysate; Lane6: Raji cell lysate; Lane7: Hepa cell lysate; Lane8: HepG2 cell lysate  
 Primary Ab: 1µg/ml Rabbit Anti-Human b2M Antibody  
 Second Ab: 0.2µg/mL HRP-Linked Caprine Anti-Rabbit IgG Polyclonal Antibody  
 (Catalog: SAA544Rb19)



Western Blot; Sample: Human A431 cell lysate;  
 Primary Ab: 1µg/ml Rabbit Anti-Human b2M Antibody  
 Second Ab: 0.2µg/mL HRP-Linked Caprine Anti-Rabbit IgG Polyclonal Antibody



Western Blot; Sample: Mouse Spleen lysate;  
 Primary Ab: 1µg/ml Rabbit Anti-Human b2M Antibody  
 Second Ab: 0.2µg/mL HRP-Linked Caprine Anti-Rabbit IgG Polyclonal Antibody

(Catalog: SAA544Rb19)

(Catalog: SAA544Rb19)

**[ IMPORTANT NOTE ]**

The kit is designed for research use only, we will not be responsible for any issue if the kit was used in clinical diagnostic or any other procedures.