

**PAA244Hu02**

**Polyclonal Antibody to Caspase 2 (CASP2)**

**Organism Species: *Homo sapiens (Human)***

***Instruction manual***

FOR RESEARCH USE ONLY

NOT FOR USE IN CLINICAL DIAGNOSTIC PROCEDURES

---

13th Edition (Revised in Aug, 2023)

### [ **PROPERTIES** ]

**Source:** Polyclonal antibody preparation

**Host:** Rabbit

**Purification:** Antigen-specific affinity chromatography followed by Protein A affinity chromatography

**Traits:** Liquid

**Concentration:** 0.5mg/mL

**UOM:** 100µL

**Cross Reactivity:** Mouse;Rat;Porcine

**Applications:** WB,IHC,ICC/IF

### [ **IMMUNOGEN** ]

**Immunogen:** Recombinant CASP2 (Gly170~Thr325) expressed in *E.coli*

**Accession No.:** RPA244Hu02

### [ **APPLICATIONS** ]

Western blotting: 0.2-3µg/mL

Immunohistochemistry: 2-30µg/mL

Immunocytochemistry: 2-30µg/mL

Optimal working dilutions must be determined by end user.

### [ **FORMULATION** ]

**Form & Buffer:** Supplied as solution form in 0.01M PBS, pH7.4, containing 0.05% Proclin-300, 50% glycerol.

### [ **STORAGE AND STABILITY** ]

**Storage:** Avoid repeated freeze/thaw cycles.

Store at 4°C for frequent use.

Aliquot and store at -20°C for 24 months.

**Stability Test:** The thermal stability is described by the loss rate. The loss rate was determined by accelerated thermal degradation test, that is, incubate the protein at 37°C for 48h, and no

obvious degradation and precipitation were observed. The loss rate is less than 5% within the expiration date under appropriate storage condition.

**[ IDENTIFICATION ]**

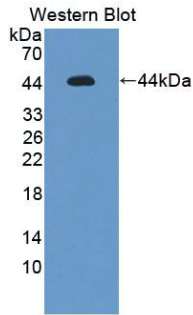
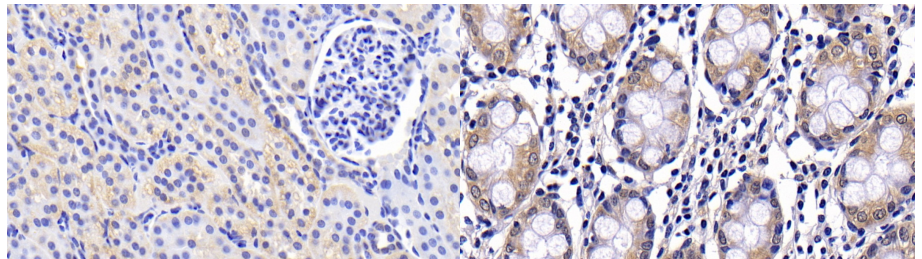
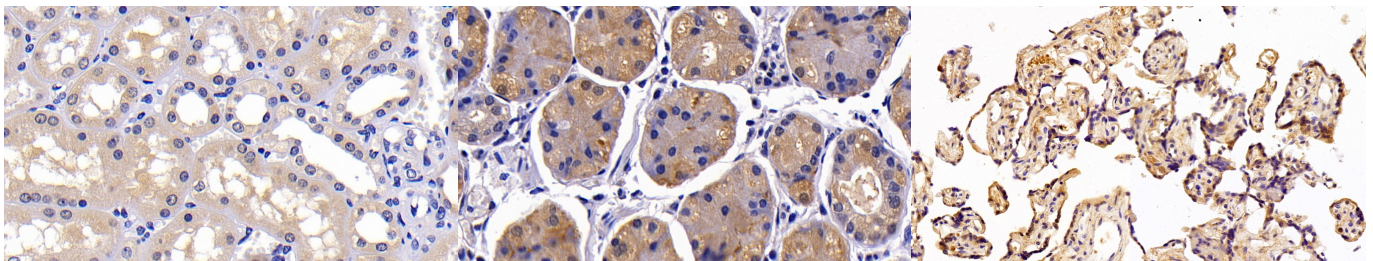


Figure. Western Blot; Sample: Recombinant CASP2, Human.



DAB staining on IHC-P;  
 Samples: Porcine Kidney Tissue;  
 Primary Ab: 20µg/ml Rabbit Anti-Human CASP2 Antibody  
 Second Ab: 2µg/mL HRP-Linked Caprine Anti-Rabbit IgG Polyclonal Antibody  
 (Catalog: SAA544Rb19)

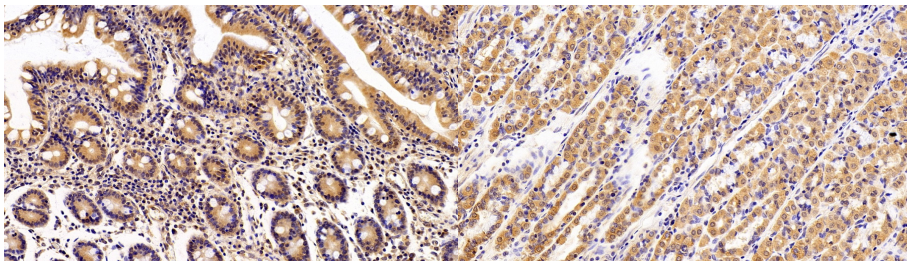
DAB staining on IHC-P;  
 Samples: Human Colon Tissue;  
 Primary Ab: 30µg/ml Rabbit Anti-Human CASP2 Antibody  
 Second Ab: 2µg/mL HRP-Linked Caprine Anti-Rabbit IgG Polyclonal Antibody  
 (Catalog: SAA544Rb19)



DAB staining on IHC-P;  
 Samples: Human Kidney Tissue;  
 Primary Ab: 30µg/ml Rabbit Anti-Human CASP2 Antibody  
 Second Ab: 2µg/mL HRP-Linked Caprine Anti-Rabbit IgG Polyclonal Antibody  
 (Catalog: SAA544Rb19)

DAB staining on IHC-P;  
 Samples: Human Stomach Tissue;  
 Primary Ab: 30µg/ml Rabbit Anti-Human CASP2 Antibody  
 Second Ab: 2µg/mL HRP-Linked Caprine Anti-Rabbit IgG Polyclonal Antibody  
 (Catalog: SAA544Rb19)

DAB staining on IHC-P;  
 Sample: Human Placenta Tissue;  
 Primary Ab: 10µg/ml Rabbit Anti-Human CASP2 Antibody  
 Second Ab: 2µg/mL HRP-Linked Caprine Anti-Rabbit IgG Polyclonal Antibody  
 (Catalog: SAA544Rb19)

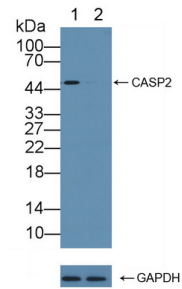


DAB staining on IHC-P;

Sample: Porcine Small intestine Tissue;  
 Primary Ab: 10µg/ml Rabbit Anti-Human CASP2 Antibody  
 Second Ab: 2µg/mL HRP-Linked Caprine Anti-Rabbit IgG Polyclonal Antibody  
 (Catalog: SAA544Rb19)

DAB staining on IHC-P;

Sample: Porcine Stomach Tissue;  
 Primary Ab: 10µg/ml Rabbit Anti-Human CASP2 Antibody  
 Second Ab: 2µg/mL HRP-Linked Caprine Anti-Rabbit IgG Polyclonal Antibody  
 (Catalog: SAA544Rb19)



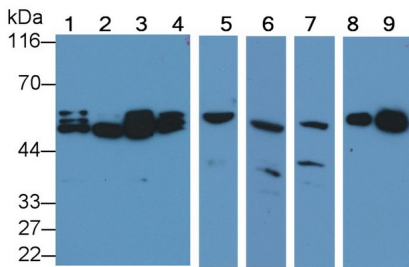
Knockout Varification:

Lane 1: Wild-type Jurkat cell lysate;  
 Lane 2: CASP2 knockout Jurkat cell lysate;

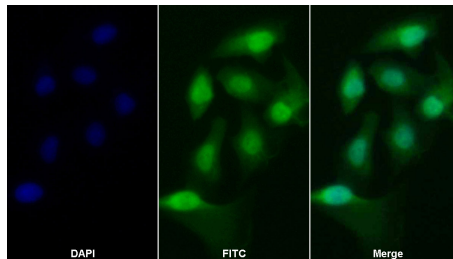
Predicted MW: 10,35,51kd

Observed MW: 51kd

Primary Ab: 1µg/ml Rabbit Anti-Human CASP2 Antibody  
 Second Ab: 0.2µg/mL HRP-Linked Caprine Anti-Rabbit IgG Polyclonal Antibody  
 (Catalog: SAA544Rb19)



Western Blot; Sample: Lane1: HeLa cell lysate; Lane2: Jurkat cell lysate; Lane3: 293T cell lysate; Lane4: Raji cell lysate;  
 Lane5: Porcine Cerebrum lysate;  
 Lane6: Rat Cerebrum lysate; Lane7: Rat Kidney lysate; Lane8: Mouse Cerebrum lysate; Lane9: Mouse Lung lysate  
 Primary Ab: 0.2µg/ml Rabbit Anti-Human CASP2 Antibody



FITC staining on IF;

Sample: U2OS cell  
 Primary Ab: 20µg/ml Rabbit Anti-Human CASP2 Antibody  
 Second Ab: 2µg/ml FITC-Linked Caprine Anti-Rabbit IgG Polyclonal Antibody  
 (Catalog: SAA544Rb11)

Second Ab: 0.2µg/mL HRP-Linked  
Caprine Anti-Rabbit IgG Polyclonal  
Antibody  
(Catalog: SAA544Rb19)

**[ IMPORTANT NOTE ]**

The kit is designed for research use only, we will not be responsible for any issue if the kit was used in clinical diagnostic or any other procedures.