

PAF466Ra01

Polyclonal Antibody to Centaurin Alpha 2 (CENTa2)

Organism Species: Rattus norvegicus (Rat)

Instruction manual

FOR IN VITRO USE AND RESEARCH USE ONLY

NOT FOR USE IN CLINICAL DIAGNOSTIC PROCEDURES

9th Edition (Revised in Jul, 2013)

[PRODUCT INFORMATION]

Immunogen: CENTa2, Rat

Clonality: Polyclonal

Host: Rabbit

Immunoglobulin Type: IgG

Purification: Affinity Chromatography.

Applications: WB, ICC, IHC-P, IHC-F, ELISA

Concentration: 200µg/mL

UOM: 100µg

[IMMUNOGEN INFORMATION]

Immunogen: Recombinant CENTa2 (Ser49~Ser360) expressed in *E.coli*.

Accession No.: RPF466Ra01

Sequence: The target protein is fused with two N-terminal Tags, His-tag and T7-tag and its sequence is listed below.

MGSSHHHHHHH SSGLVPRGSH MASMTGGQQM GRGSEF- SG VHRNFPDISK
VKSVRLDFWD DSMVEFMTHN GNLSVKAKFE ARVPTFYYPV QASDCLVLKE QWIRAKYERQ
EFMAEKAVSP PGDREGFLWK RGRDNSQFLR RRFVLLSREG LLKYTKKEG KTPKAIINIK
DLNATFQTEK IGHPHGLQIT YRKEGQTRNL FVYHDSGKEI VDWFNALRAA RLQYLKLAFP
DLPESELVPL ITRNYLKQGF MEKTGPKHRE PFKKRWFALD PQERRLLYYK NPLDAFEQGG
VFLGSNEQGY EVWEGLPQGI RGNRWKVGILT VITPERKFVF TCPTEKEQRE WLESRLGVLS

[ANTIBODY SPECIFICITY]

The antibody is a rabbit polyclonal antibody raised against CENTa2. It has been selected for its ability to recognize CENTa2 in immunohistochemical staining and western blotting.

[APPLICATIONS]

Western blotting: 1:50-400

Immunocytochemistry in formalin fixed cells: 1:50-500

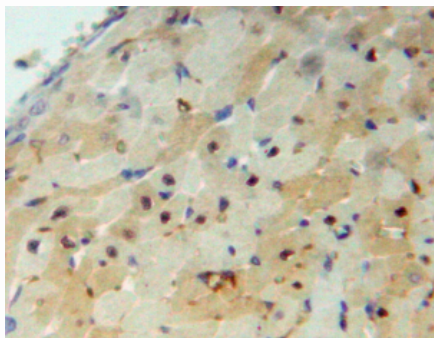
Immunohistochemistry in formalin fixed frozen section: 1:50-500

Immunohistochemistry in paraffin section: 1:10-100

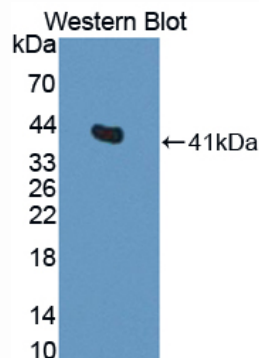
Enzyme-linked Immunosorbent Assay: 1:100-200

Optimal working dilutions must be determined by end user.

[IMAGES]



Used in DAB staining on formalin fixed
paraffin-embedded heart tissue



Used in Western Blot, Sample:
Recombinant CENTa2, Rat

[CONTENTS]

Form & Buffer: Supplied as solution form in PBS, pH7.4, containing 0.02% NaN₃, 50% glycerol.

[QUALITY CONTROL]

Content: The quality control contains recombinant CENTa2 (Ser49~Ser360) disposed in loading buffer.

Usage: 10uL per well when 3,3'-Diaminobenzidine(DAB) as the substrate.
5uL per well when used in enhanced chemiluminescent (ECL).

Note: The quality control is specifically manufactured as the positive control. Not used for other purposes.

Loading Buffer: 100mM Tris(pH8.8), 2% SDS, 200mM NaCl, 50% glycerol, BPB 0.01%, NaN₃ 0.02%.

[STORAGE]

Store at 4°C for frequent use. Stored at -20°C to -80°C in a manual defrost freezer for one year without detectable loss of activity. Avoid repeated freeze-thaw cycles.