

**PAB212Hu01**

**Polyclonal Antibody to Chromogranin A (CHGA)**

**Organism Species: *Homo sapiens (Human)***

***Instruction manual***

FOR RESEARCH USE ONLY

NOT FOR USE IN CLINICAL DIAGNOSTIC PROCEDURES

---

13th Edition (Revised in Aug, 2023)

### **[ PROPERTIES ]**

**Source:** Polyclonal antibody preparation

**Host:** Rabbit

**Purification:** Antigen-specific affinity chromatography followed by Protein A affinity chromatography

**Traits:** Liquid

**Concentration:** 0.41mg/ml

**UOM:** 100µl

**Cross Reactivity:** N/A

**Applications:** WB; IHC; ICC; IP.

### **[ IMMUNOGEN ]**

**Immunogen:** Recombinant CHGA (Gln15~Gly148) expressed in *E.coli*

**Accession No.:** RPB212Hu01

### **[ APPLICATIONS ]**

Western blotting: 0.01-5µg/mL

Immunohistochemistry: 5-20µg/mL

Immunocytochemistry: 5-20µg/mL

Optimal working dilutions must be determined by end user.

### **[ FORMULATION ]**

**Form & Buffer:** Supplied as solution form in 0.01M PBS, pH7.4, containing 0.05% Proclin-300, 50% glycerol.

### **[ STORAGE AND STABILITY ]**

**Storage:** Avoid repeated freeze/thaw cycles.

Store at 4°C for frequent use.

Aliquot and store at -20°C for 24 months.

**Stability Test:** The thermal stability is described by the loss rate. The loss rate was determined by accelerated thermal degradation test, that is, incubate the protein at 37°C for 48h, and no

obvious degradation and precipitation were observed. The loss rate is less than 5% within the expiration date under appropriate storage condition.

**[ IDENTIFICATION ]**

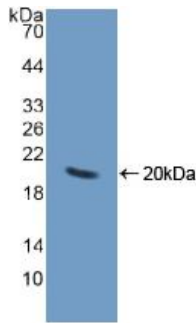
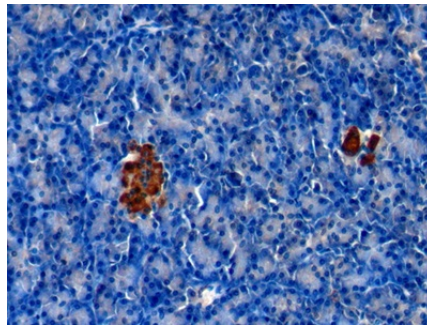
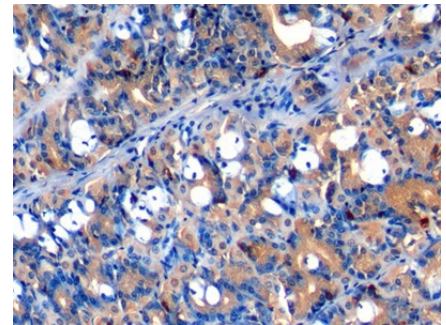


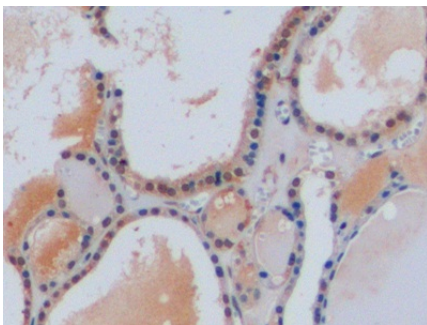
Figure. Western Blot; Sample: Recombinant CHGA, Human.



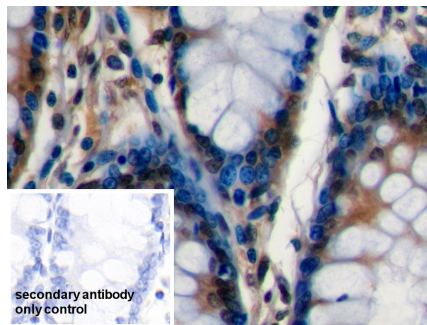
DAB staining on IHC-P;  
 Samples: Human Pancreas Tissue;  
 Primary Ab: 10µg/ml Rabbit Anti-Human CHGA Antibody  
 Second Ab: 2µg/mL HRP-Linked Caprine Anti-Rabbit IgG Polyclonal Antibody  
 (Catalog: SAA544Rb19)



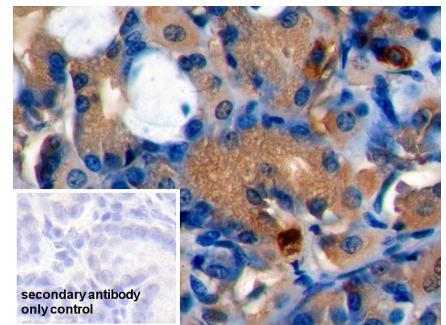
DAB staining on IHC-P;  
 Samples: Human Stomach Tissue;  
 Primary Ab: 10µg/ml Rabbit Anti-Human CHGA Antibody  
 Second Ab: 2µg/mL HRP-Linked Caprine Anti-Rabbit IgG Polyclonal Antibody  
 (Catalog: SAA544Rb19)



DAB staining on IHC-P;  
 Samples: Human Thyroid Tissue;  
 Primary Ab: 10µg/ml Rabbit Anti-Human CHGA Antibody  
 Second Ab: 2µg/mL HRP-Linked Caprine Anti-Rabbit IgG Polyclonal Antibody  
 (Catalog: SAA544Rb19)



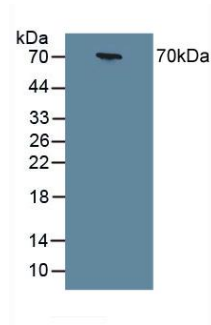
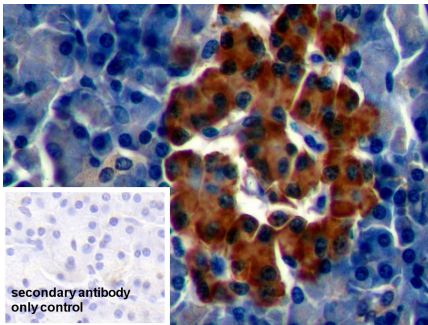
DAB staining on IHC-P;  
 Sample: Human Colon Tissue  
 Primary Ab: 10µg/ml Rabbit Anti-Human CHGA Antibody  
 Control: Used PBS instead of primary antibody  
 Second Ab: 2µg/ml HRP-Linked Caprine Anti-Rabbit IgG Polyclonal Antibody



DAB staining on IHC-P;  
 Sample: Human Stomach Tissue  
 Primary Ab: 10µg/ml Rabbit Anti-Human CHGA Antibody  
 Control: Used PBS instead of primary antibody  
 Second Ab: 2µg/ml HRP-Linked Caprine Anti-Rabbit IgG Polyclonal Antibody

(Catalog: SAA544Rb19)

(Catalog: SAA544Rb19)



DAB staining on IHC-P;

Sample: Human Pancreas Tissue

Primary Ab: 10µg/ml Rabbit Anti-  
Human CHGA Antibody

Control: Used PBS instead of primary  
antibody

Second Ab: 2µg/ml HRP-Linked  
Caprine Anti-Rabbit IgG Polyclonal  
Antibody

(Catalog: SAA544Rb19)

Figure. Western Blot; Sample: Human  
Serum.

### [ **IMPORTANT NOTE** ]

The kit is designed for research use only, we will not be responsible for any issue if the kit was used in clinical diagnostic or any other procedures.