

**PAA781Hu01**

**Polyclonal Antibody to Cluster Of Differentiation 276 (CD276)**

**Organism Species: *Homo sapiens (Human)***

***Instruction manual***

FOR RESEARCH USE ONLY

NOT FOR USE IN CLINICAL DIAGNOSTIC PROCEDURES

---

13th Edition (Revised in Aug, 2023)

**[ PROPERTIES ]**

**Source:** Polyclonal antibody preparation

**Host:** Rabbit

**Purification:** Antigen-specific affinity chromatography followed by Protein A affinity chromatography

**Traits:** Liquid

**Concentration:** 0.5mg/mL

**UOM:** 100µL

**Cross Reactivity:** N/A

**Applications:** WB; IHC; FCM

**[ IMMUNOGEN ]**

**Immunogen:** Recombinant CD276 (Thr47~Ser219) expressed in *E.coli*

**Accession No.:** RPA781Hu01

**[ APPLICATIONS ]**

Western blotting: 0.01-3µg/mL;

Immunohistochemistry: 5-30µg/mL;

For flow cytometry: 0.5-2 µg per 10<sup>6</sup> cells in 100 µl volume;

Optimal working dilutions must be determined by end user.

**[ FORMULATION ]**

**Form & Buffer:** Supplied as solution form in 0.01M PBS, pH7.4, containing 0.05% Proclin-300, 50% glycerol.

**[ STORAGE AND STABILITY ]**

**Storage:** Avoid repeated freeze/thaw cycles.

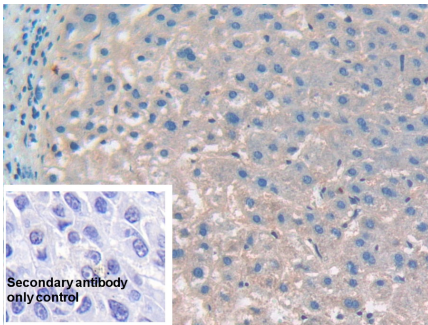
Store at 4°C for frequent use.

Aliquot and store at -20°C for 24 months.

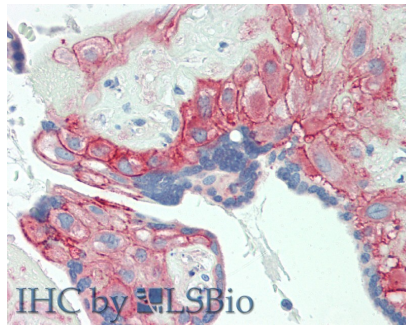
**Stability Test:** The thermal stability is described by the loss rate. The loss rate was determined by accelerated thermal degradation test, that is, incubate the protein at 37°C for 48h, and no

obvious degradation and precipitation were observed. The loss rate is less than 5% within the expiration date under appropriate storage condition.

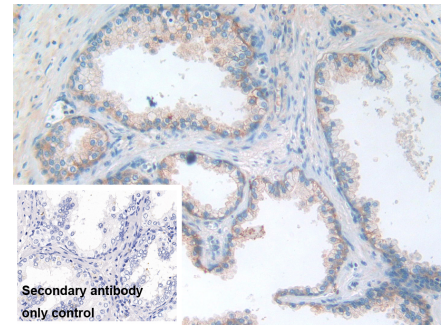
**[ IDENTIFICATION ]**



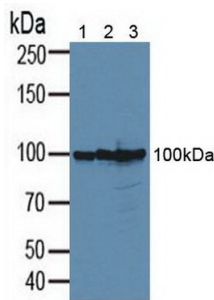
DAB staining on IHC-P; Samples: Human Liver cancer Tissue; Primary Ab: 10µg/ml Rabbit Anti-Human CD276 Antibody Second Ab: 2µg/mL HRP-Linked Caprine Anti-Rabbit IgG Polyclonal Antibody (Catalog: SAA544Rb19)



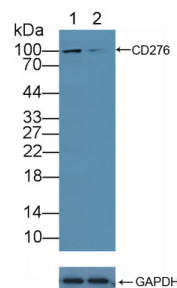
Vector Red staining on IHC-P; Samples: Human Placenta Tissue; Primary Ab: 10µg/ml Rabbit Anti-Human CD276 Antibody Second Ab: 2µg/mL HRP-Linked Caprine Anti-Rabbit IgG Polyclonal Antibody



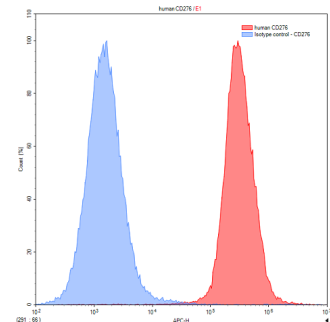
DAB staining on IHC-P; Sample: Human Prostate Tissue Primary Ab: 10µg/ml Rabbit Anti-Human CD276 Antibody Control: Used PBS instead of primary antibody Second Ab: 2µg/ml HRP-Linked Caprine Anti-Rabbit IgG Polyclonal Antibody (Catalog: SAA544Rb19)



Western Blot; Sample: Lane1: 293T cell lysate; Lane2: PC3 cell lysate; Lane3: MCF7 cell lysate Primary Ab: 3µg/ml Rabbit Anti-Human CD276 Antibody Second Ab: 0.2µg/mL HRP-Linked Caprine Anti-Rabbit IgG Polyclonal



Knockout Verification: Lane 1: Wild-type 293T cell lysate; Lane 2: CD276 knockout 293T cell lysate; Predicted MW: 57,53,33kd Observed MW: 100kd Primary Ab: 3µg/ml Rabbit Anti-Human



Chok1 transfected with human CD276 (Stable transfection) was stained with rabbit Anti-human CD276 Polyclonal Antibody (Catalog # PAA781Hu01), filled red histogram) or Isotype control antibody (Catalog # IS067-Rb01, filled blue histogram), followed by

Antibody  
(Catalog: SAA544Rb19)

CD276 Antibody  
Second Ab: 0.2µg/mL HRP-Linked  
Caprine Anti-Rabbit IgG Polyclonal  
Antibody  
(Catalog: SAA544Rb19)

CY5-conjugated Anti-rabbit IgG  
Secondary Antibody (Catalog #  
SAA544Rb11). Cells were fixed with  
4% paraformaldehyde and  
permeabilized with 0.1% Triton X-100.

**[ IMPORTANT NOTE ]**

The kit is designed for research use only, we will not be responsible for any issue if the kit was used in clinical diagnostic or any other procedures.