

**PAG886Hu01**

**Polyclonal Antibody to Cold Inducible RNA Binding Protein (CIRBP)**

**Organism Species: *Homo sapiens (Human)***

***Instruction manual***

FOR RESEARCH USE ONLY

NOT FOR USE IN CLINICAL DIAGNOSTIC PROCEDURES

---

13th Edition (Revised in Aug, 2023)

### [ **PROPERTIES** ]

**Source:** Polyclonal antibody preparation

**Host:** Rabbit

**Purification:** Antigen-specific affinity chromatography followed by Protein A affinity chromatography

**Traits:** Liquid

**Concentration:** 0.5mg/ml

**UOM:** 100µl

**Cross Reactivity:** Mouse; Porcine.

**Applications:** WB,IHC,ICC/IF

### [ **IMMUNOGEN** ]

**Immunogen:** Recombinant CIRBP (Met1~Glu172) expressed in *E.coli*

**Accession No.:** RPG886Hu01

### [ **APPLICATIONS** ]

Western blotting: 0.5-3µg/mL;

Immunohistochemistry: 5-20µg/mL;

Immunofluorescence:5-20µg/mL;

Optimal working dilutions must be determined by end user.

### [ **FORMULATION** ]

**Form & Buffer:** Supplied as solution form in 0.01M PBS, pH7.4, containing 0.05% Proclin-300, 50% glycerol.

### [ **STORAGE AND STABILITY** ]

**Storage:** Avoid repeated freeze/thaw cycles.

Store at 4°C for frequent use.

Aliquot and store at -20°C for 24 months.

**Stability Test:** The thermal stability is described by the loss rate. The loss rate was determined by accelerated thermal degradation test, that is, incubate the protein at 37°C for 48h, and no

obvious degradation and precipitation were observed. The loss rate is less than 5% within the expiration date under appropriate storage condition.

**[ IDENTIFICATION ]**

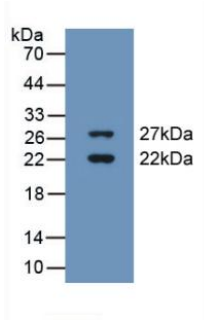
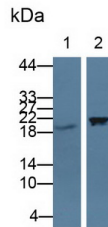
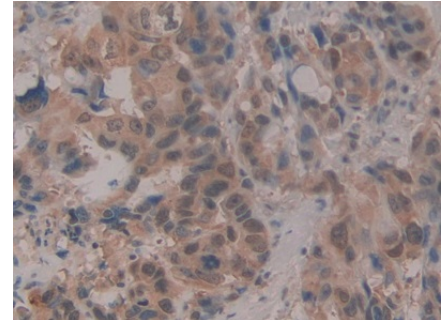


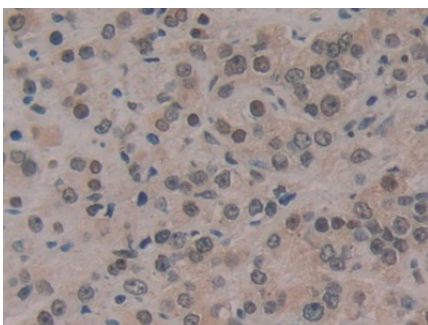
Figure. Western Blot; Sample: Recombinant CIRBP, Human.



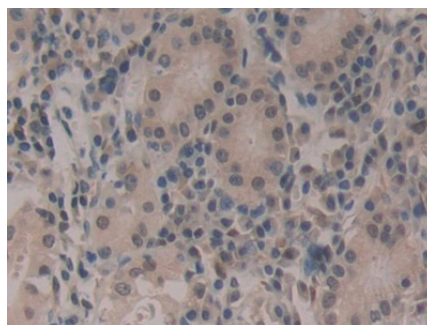
Western Blot; Sample: Lane1: Porcine Cerebrum lysate; Lane2: Mouse Cerebrum lysate  
 Primary Ab: 3ug/ml Rabbit Anti-Human CIRBP Antibody  
 Second Ab: 0.2µg/mL HRP-Linked Caprine Anti-Rabbit IgG Polyclonal Antibody  
 (Catalog: SAA544Rb19)



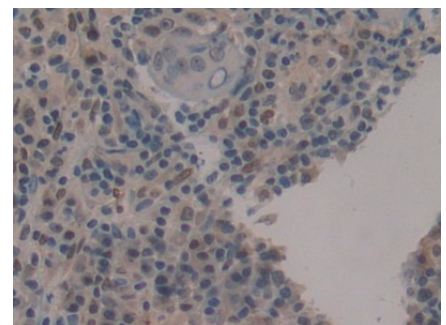
DAB staining on IHC-P;  
 Samples: Human Breast cancer Tissue;  
 Primary Ab: 10µg/ml Rabbit Anti-Human CIRBP Antibody  
 Second Ab: 2µg/mL HRP-Linked Caprine Anti-Rabbit IgG Polyclonal Antibody  
 (Catalog: SAA544Rb19)



DAB staining on IHC-P;  
 Samples: Human Prostate cancer Tissue;  
 Primary Ab: 10µg/ml Rabbit Anti-Human CIRBP Antibody  
 Second Ab: 2µg/mL HRP-Linked Caprine Anti-Rabbit IgG Polyclonal Antibody

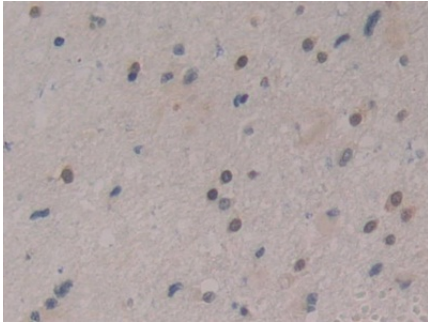


DAB staining on IHC-P;  
 Samples: Human Stomach Tissue;  
 Primary Ab: 10µg/ml Rabbit Anti-Human CIRBP Antibody  
 Second Ab: 2µg/mL HRP-Linked Caprine Anti-Rabbit IgG Polyclonal Antibody  
 (Catalog: SAA544Rb19)



DAB staining on IHC-P;  
 Samples: Human Skin cancer Tissue;  
 Primary Ab: 10µg/ml Rabbit Anti-Human CIRBP Antibody  
 Second Ab: 2µg/mL HRP-Linked Caprine Anti-Rabbit IgG Polyclonal Antibody  
 (Catalog: SAA544Rb19)

(Catalog: SAA544Rb19)



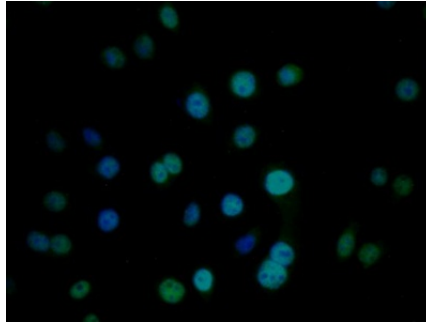
DAB staining on IHC-P;

Samples: Human Glioma Tissue;

Primary Ab: 10µg/ml Rabbit Anti-  
Human CIRBP Antibody

Second Ab: 2µg/mL HRP-Linked  
Caprine Anti-Rabbit IgG Polyclonal  
Antibody

(Catalog: SAA544Rb19)



FITC staining on IF;

Samples: Human HepG2 Cells;

Primary Ab: 10µg/ml Rabbit Anti-  
Human CIRBP Antibody

Second Ab: 1µg/ml FITC-Linked  
Caprine Anti-Rabbit IgG Polyclonal  
Antibody

(Catalog: SAA544Rb18)

**[ IMPORTANT NOTE ]**

The kit is designed for research use only, we will not be responsible for any issue if the kit was used in clinical diagnostic or any other procedures.