

**PAA861Hu01**

**Polyclonal Antibody to Complement Component 3 (C3)**

**Organism Species: *Homo sapiens* (Human)**

***Instruction manual***

FOR RESEARCH USE ONLY

NOT FOR USE IN CLINICAL DIAGNOSTIC PROCEDURES

---

13th Edition (Revised in Aug, 2023)

**[ PROPERTIES ]**

**Source:** Polyclonal antibody preparation

**Host:** Rabbit

**Purification:** Antigen-specific affinity chromatography followed by Protein A affinity chromatography

**Traits:** Liquid

**Concentration:** 0.5mg/mL

**UOM:** 200µL

**Cross Reactivity:** N/A

**Applications:** WB; IHC; ICC; IP; FCM

**[ IMMUNOGEN ]**

**Immunogen:** Recombinant Complement Component 3 (Leu1000~Glu1326) expressed in *E.coli*

**Accession No.:** RPA861Hu01

**[ APPLICATIONS ]**

Western blotting: 0.01-3?g/mL;

Immunohistochemistry: 5-30?g/mL;

Immunocytochemistry: 5-30?g/mL;

Flow cytometry:20?g/ml;

Optimal working dilutions must be determined by end user.

**[ FORMULATION ]**

**Form & Buffer:** Supplied as solution form in PBS, pH7.4, containing 0.02% NaN<sub>3</sub>, 50% glycerol.

**[ STORAGE AND STABILITY ]**

**Storage:** Avoid repeated freeze/thaw cycles.

Store at 4°C for frequent use.

Aliquot and store at -20°C for 24 months.

**Stability Test:** The thermal stability is described by the loss rate. The loss rate was determined by accelerated thermal degradation test, that is, incubate the protein at 37°C for 48h, and no obvious degradation and precipitation were observed. The loss rate is less than 5% within the expiration date under appropriate storage condition.

**[ IDENTIFICATION ]**

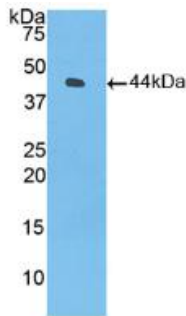
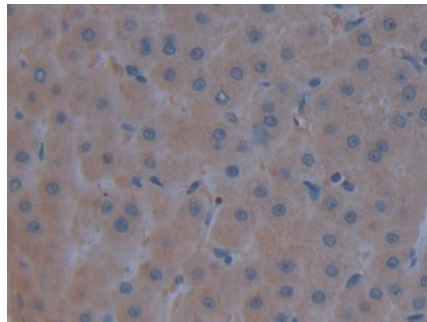
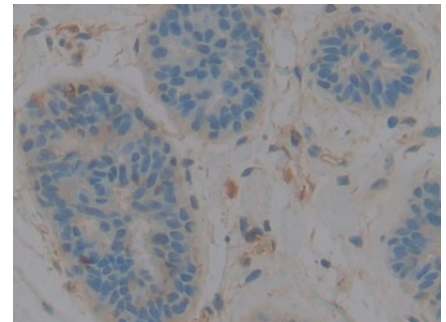


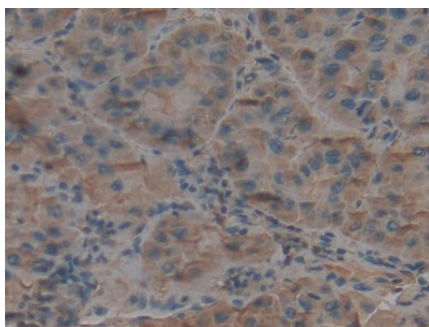
Figure. Western Blot; Sample: Recombinant C3, Human.



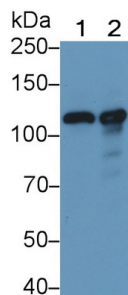
DAB staining on IHC-P; Samples: Human Liver Tissue; Primary Ab: 30µg/ml Rabbit Anti-Human C3 Antibody Second Ab: 2µg/mL HRP-Linked Caprine Anti-Rabbit IgG Polyclonal Antibody (Catalog: SAA544Rb19)



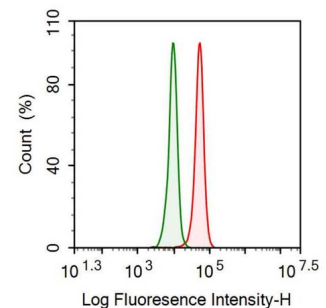
DAB staining on IHC-P; Samples: Human Mammary gland Tissue; Primary Ab: 20µg/ml Rabbit Anti-Human C3 Antibody Second Ab: 2µg/mL HRP-Linked Caprine Anti-Rabbit IgG Polyclonal Antibody (Catalog: SAA544Rb19)



DAB staining on IHC-P; Samples: Human Liver cancer Tissue; Primary Ab: 30µg/ml Rabbit Anti-Human C3 Antibody Second Ab: 2µg/mL HRP-Linked Caprine Anti-Rabbit IgG Polyclonal



Western Blot; Sample: Lane1: Human Serum; Lane2: Human Plasma Primary Ab: 0.1?g/ml Rabbit Anti-Human C3 Antibody Second Ab: 0.2µg/mL HRP-Linked Caprine Anti-Rabbit IgG Polyclonal



Human HepG2 cell was fixed with 2% paraformaldehyde (10 min) , permeabilised with 0.1% BSA-Triton X-100, then stained with 20µg/ml rabbit Anti-human C3 Polyclonal Antibody (Catalog PAA861Hu01, red histogram)

Antibody  
(Catalog: SAA544Rb19)

Antibody  
(Catalog: SAA544Rb19)

or Isotype control antibody (Catalog  
IS067-Rb01, green histogram), followed  
by 1µg/ml FITC-conjugated Anti-rabbit  
IgG Secondary Antibody (Catalog  
SAA544Rb18).

**[ IMPORTANT NOTE ]**

The kit is designed for research use only, we will not be responsible for any issue if the kit was used in clinical diagnostic or any other procedures.