

**PAD784Ra01**

**Polyclonal Antibody to Complement Component 8a (C8a)**

**Organism Species: *Rattus norvegicus* (Rat)**

***Instruction manual***

FOR RESEARCH USE ONLY

NOT FOR USE IN CLINICAL DIAGNOSTIC PROCEDURES

---

13th Edition (Revised in Aug, 2023)

## **[ PROPERTIES ]**

**Source:** Polyclonal antibody preparation

**Host:** Rabbit

**Purification:** Antigen-specific affinity chromatography followed by Protein A affinity chromatography

**Traits:** Liquid

**Concentration:** 0.5mg/ml

**UOM:** 100µl

**Cross Reactivity:** N/A

**Applications:** WB

## **[ IMMUNOGEN ]**

**Immunogen:** Recombinant C8a (Gln21~His300) expressed in *E.coli*

**Accession No.:** RPD784Ra01

## **[ APPLICATIONS ]**

Western blotting: 0.01-2µg/mL;

Optimal working dilutions must be determined by end user.

## **[ FORMULATION ]**

**Form & Buffer:** Supplied as solution form in 0.01M PBS, pH7.4, containing 0.05% Proclin-300, 50% glycerol.

## **[ STORAGE AND STABILITY ]**

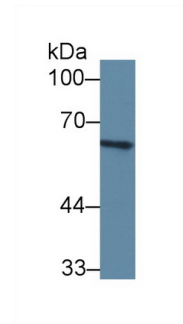
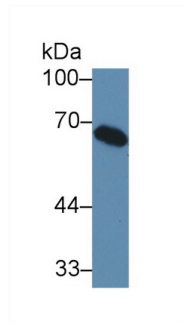
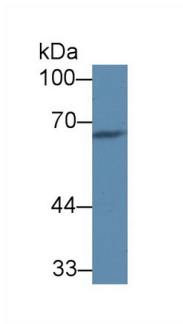
**Storage:** Avoid repeated freeze/thaw cycles.

Store at 4°C for frequent use.

Aliquot and store at -20°C for 24 months.

**Stability Test:** The thermal stability is described by the loss rate. The loss rate was determined by accelerated thermal degradation test, that is, incubate the protein at 37°C for 48h, and no obvious degradation and precipitation were observed. The loss rate is less than 5% within the expiration date under appropriate storage condition.

**[ IDENTIFICATION ]**



Western Blot; Sample: Rat Heart lysate;	Western Blot; Sample: Rat Serum;	Western Blot; Sample: Rat Gallbladder
Primary Ab: 1µg/ml Rabbit Anti-Rat C8a	Primary Ab: 1µg/ml Rabbit Anti-Rat C8a	lysate;
Antibody	Antibody	Primary Ab: 1µg/ml Rabbit Anti-Rat C8a
Second Ab: 0.2µg/mL HRP-Linked	Second Ab: 0.2µg/mL HRP-Linked	Antibody
Caprine Anti-Rabbit IgG Polyclonal	Caprine Anti-Rabbit IgG Polyclonal	Second Ab: 0.2µg/mL HRP-Linked
Antibody	Antibody	Caprine Anti-Rabbit IgG Polyclonal
(Catalog: SAA544Rb19)	(Catalog: SAA544Rb19)	Antibody
		(Catalog: SAA544Rb19)

**[ IMPORTANT NOTE ]**

The kit is designed for research use only, we will not be responsible for any issue if the kit was used in clinical diagnostic or any other procedures.