

**PAA585Hu01**

**Polyclonal Antibody to Cyclin D1 (CCND1)**

**Organism Species: *Homo sapiens* (Human)**

***Instruction manual***

**FOR RESEARCH USE ONLY**

**NOT FOR USE IN CLINICAL DIAGNOSTIC PROCEDURES**

---

13th Edition (Revised in Aug, 2023)

## **[ PROPERTIES ]**

**Source:** Polyclonal antibody preparation

**Host:** Rabbit

**Purification:** Antigen-specific affinity chromatography followed by Protein A affinity chromatography

**Traits:** Liquid

**Concentration:** 0.5mg/mL

**UOM:** 10µL

**Cross Reactivity:** Mouse;Rat

**Applications:** WB; ICC/IF

## **[ IMMUNOGEN ]**

**Immunogen:** Recombinant CCND1 (Met1~Ile295) expressed in *E.coli*

**Accession No.:** RPA585Hu01

## **[ APPLICATIONS ]**

Western blotting: 0.01-2µg/mL;

Immunofluorescence: 5-20µg/mL;

Optimal working dilutions must be determined by end user.

## **[ FORMULATION ]**

**Form & Buffer:** Supplied as solution form in 0.01M PBS, pH7.4, containing 0.05% Proclin-300, 50% glycerol.

## **[ STORAGE AND STABILITY ]**

**Storage:** Avoid repeated freeze/thaw cycles.

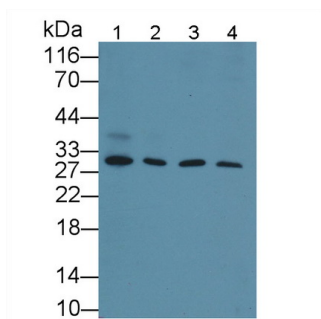
Store at 4°C for frequent use.

Aliquot and store at -20°C for 24 months.

**Stability Test:** The thermal stability is described by the loss rate. The loss rate was determined by accelerated thermal degradation test, that is, incubate the protein at 37°C for 48h, and no obvious degradation and precipitation were observed. The loss rate is less than 5% within the

expiration date under appropriate storage condition.

## [ IDENTIFICATION ]

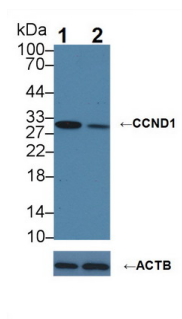


Western Blot; Sample: Lane1: A549 cell lysate; Lane2: Mouse Placenta lysate; Lane3: Mouse Cerebrum lysate; Lane4: Rat Cerebrum lysate;

Primary Ab: 1µg/ml Rabbit Anti-Human CCND1 Antibody

Second Ab: 0.2µg/mL HRP-Linked Caprine Anti-Rabbit IgG Polyclonal Antibody

(Catalog: SAA544Rb19)



Knockout Varification:

Lane 1: Wild-type A549 cell lysate; Lane 2: CCND1 knockout A549 cell lysate;

Predicted MW: 33kDa

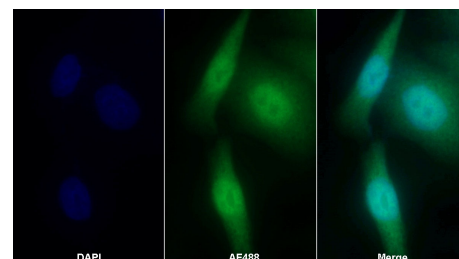
Observed MW: 30kDa

Primary Ab: 1µg/ml Rabbit Anti-Human CCND1 Antibody

Second Ab: 0.2µg/mL HRP-Linked

Caprine Anti-Rabbit IgG Polyclonal Antibody

(Catalog: SAA544Rb19)



AF488 staining on IF;

Sample: MCF7 cell

Primary Ab: 20µg/ml Rabbit Anti-Human CCND1 Antibody

Second Ab: 2?g/ml AF488-Linked Caprine Anti-Rabbit IgG Polyclonal Antibody

(Catalog: SAA544Rb11)

## [ IMPORTANT NOTE ]

The kit is designed for research use only, we will not be responsible for any issue if the kit was used in clinical diagnostic or any other procedures.