

PAB528Ra01

Polyclonal Antibody to Cyclophilin 40 (CYP-40)

Organism Species: *Rattus norvegicus* (Rat)

Instruction manual

FOR RESEARCH USE ONLY

NOT FOR USE IN CLINICAL DIAGNOSTIC PROCEDURES

13th Edition (Revised in Aug, 2023)

[**PROPERTIES**]

Source: Polyclonal antibody preparation

Host: Rabbit

Purification: Antigen-specific affinity chromatography followed by Protein A affinity chromatography

Traits: Liquid

Concentration: 0.5mg/mL

UOM: 100µl

Cross Reactivity: Human;Mouse

Applications: WB,IHC

[**IMMUNOGEN**]

Immunogen: Recombinant CYP-40 (Ala7~Gly191) expressed in *E.coli*

Accession No.: RPB528Ra01

[**APPLICATIONS**]

Western blotting: 0.5-3µg/mL

Immunohistochemistry: 5-20µg/mL

Immunocytochemistry: 5-20µg/mL

Optimal working dilutions must be determined by end user.

[**FORMULATION**]

Form & Buffer: Supplied as solution form in 0.01M PBS, pH7.4, containing 0.05% Proclin-300, 50% glycerol.

[**STORAGE AND STABILITY**]

Storage: Avoid repeated freeze/thaw cycles.

Store at 4°C for frequent use.

Aliquot and store at -20°C for 24 months.

Stability Test: The thermal stability is described by the loss rate. The loss rate was determined by accelerated thermal degradation test, that is, incubate the protein at 37°C for 48h, and no

obvious degradation and precipitation were observed. The loss rate is less than 5% within the expiration date under appropriate storage condition.

[IDENTIFICATION]

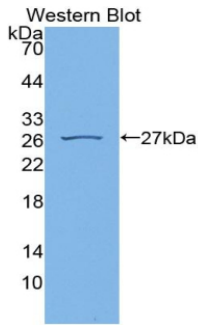
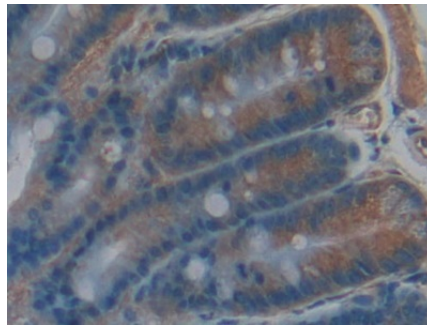
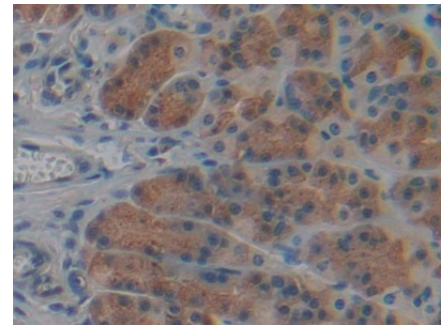


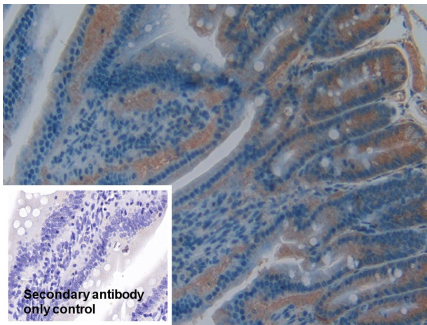
Figure. Western Blot; Sample: Recombinant CYPD, Rat.



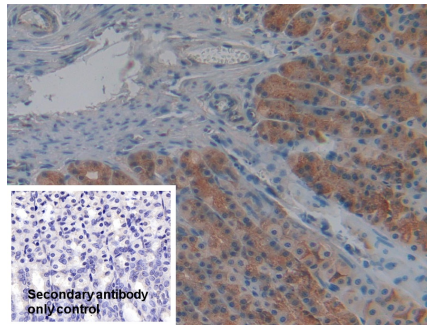
DAB staining on IHC-P; Samples: Rat Intestine Tissue; Primary Ab: 10µg/ml Rabbit Anti-Rat CYPD Antibody Second Ab: 2µg/mL HRP-Linked Caprine Anti-Rabbit IgG Polyclonal Antibody (Catalog: SAA544Rb19)



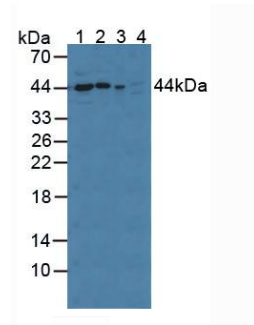
DAB staining on IHC-P; Samples: Rat Stomach Tissue; Primary Ab: 10µg/ml Rabbit Anti-Rat CYPD Antibody Second Ab: 2µg/mL HRP-Linked Caprine Anti-Rabbit IgG Polyclonal Antibody (Catalog: SAA544Rb19)



DAB staining on IHC-P; Sample: Rat Small intestine Tissue Primary Ab: 10µg/ml Rabbit Anti-Rat CYP-40 Antibody Control: Used PBS instead of primary antibody Secondary Ab: 2µg/ml HRP-Linked Caprine Anti-Rabbit IgG Polyclonal Antibody



DAB staining on IHC-P; Sample: Rat Stomach Tissue Primary Ab: 10µg/ml Rabbit Anti-Rat CYP-40 Antibody Control: Used PBS instead of primary antibody Secondary Ab: 2µg/ml HRP-Linked Caprine Anti-Rabbit IgG Polyclonal Antibody

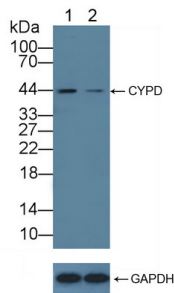


Western Blot; Sample: Lane1: Rat Serum; Lane2: Rat Cerebrum lysate; Lane3: Mouse Cerebrum lysate; Lane4: A549 cell lysate Primary Ab: 3µg/ml Rabbit Anti-Rat CYPD Antibody Secondary Ab: 0.2µg/mL HRP-Linked Caprine Anti-Rabbit IgG Polyclonal Antibody

(Catalog: SAA544Rb19)

(Catalog: SAA544Rb19)

(Catalog: SAA544Rb19)



Knockout Verification:

Lane 1: Wild-type A549 cell lysate;

Lane 2: CYPD knockout A549 cell
lysate;

Predicted MW: 41kd

Observed MW: 44kd

Primary Ab: 3µg/ml Rabbit Anti-Rat
CYPD Antibody

Second Ab: 0.2µg/mL HRP-Linked
Caprine Anti-Rabbit IgG Polyclonal
Antibody

(Catalog: SAA544Rb19)

[IMPORTANT NOTE]

The kit is designed for research use only, we will not be responsible for any issue if the kit was used in clinical diagnostic or any other procedures.