

**PAD540Hu01**

**Polyclonal Antibody to Cytochrome P450 26A1 (CYP26A1)**

**Organism Species: *Homo sapiens (Human)***

***Instruction manual***

FOR RESEARCH USE ONLY

NOT FOR USE IN CLINICAL DIAGNOSTIC PROCEDURES

---

13th Edition (Revised in Aug, 2023)

**[ PROPERTIES ]**

**Source:** Polyclonal antibody preparation

**Host:** Rabbit

**Purification:** Antigen-specific affinity chromatography followed by Protein A affinity chromatography

**Traits:** Liquid

**Concentration:** 0.5mg/mL

**UOM:** 100µl

**Cross Reactivity:** Porcine

**Applications:** WB,IHC

**[ IMMUNOGEN ]**

**Immunogen:** Recombinant CYP26A1 (Arg73~Ile255 (Accession # O43174)) expressed in *E.coli*

**Accession No.:** RPD540Hu01

**[ APPLICATIONS ]**

Western blotting: 0.01-3µg/mL

Immunohistochemistry: 5-30µg/mL

Optimal working dilutions must be determined by end user.

**[ FORMULATION ]**

**Form & Buffer:** Supplied as solution form in 0.01M PBS, pH7.4, containing 0.05% Proclin-300, 50% glycerol.

**[ STORAGE AND STABILITY ]**

**Storage:** Avoid repeated freeze/thaw cycles.

Store at 4°C for frequent use.

Aliquot and store at -20°C for 24 months.

**Stability Test:** The thermal stability is described by the loss rate. The loss rate was determined by accelerated thermal degradation test, that is, incubate the protein at 37°C for 48h, and no

obvious degradation and precipitation were observed. The loss rate is less than 5% within the expiration date under appropriate storage condition.

**[ IDENTIFICATION ]**

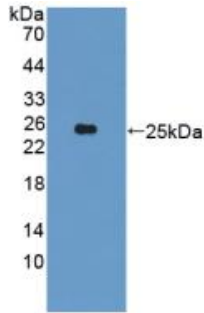
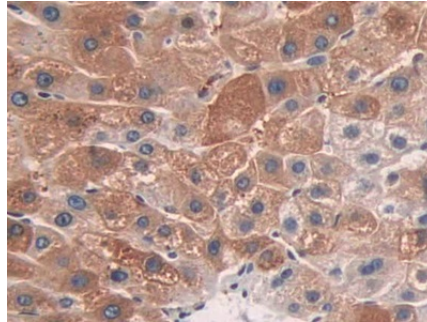
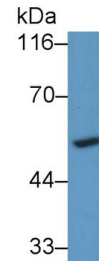


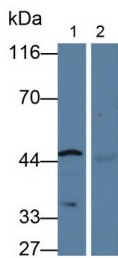
Figure. Western Blot; Sample: Recombinant CYP26A1, Human.



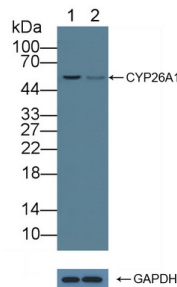
DAB staining on IHC-P;  
 Samples: Human Liver Tissue;  
 Primary Ab: 10µg/ml Rabbit Anti-Human CYP26A1 Antibody  
 Second Ab: 2µg/mL HRP-Linked Caprine Anti-Rabbit IgG Polyclonal Antibody  
 (Catalog: SAA544Rb19)



Western Blot; Sample: Jurkat cell lysate  
 Primary Ab: 3ug/ml Rabbit Anti-Human CYP26A1 Antibody  
 Second Ab: 0.2µg/mL HRP-Linked Caprine Anti-Rabbit IgG Polyclonal Antibody  
 (Catalog: SAA544Rb19)



Western Blot; Sample: Lane1: Porcine Liver lysate; Lane2: Porcine Heart lysate  
 Primary Ab: 3ug/ml Rabbit Anti-Human CYP26A1 Antibody  
 Second Ab: 0.2µg/mL HRP-Linked Caprine Anti-Rabbit IgG Polyclonal Antibody  
 (Catalog: SAA544Rb19)



Knockout Varification:  
 Lane 1: Wild-type Jurkat cell lysate;  
 Lane 2: CYP26A1 knockout Jurkat cell lysate;  
 Predicted MW: 49,56kd  
 Observed MW: 56kd  
 Primary Ab: 3µg/ml Rabbit Anti-Human CYP26A1 Antibody  
 Second Ab: 0.2µg/mL HRP-Linked

Caprine Anti-Rabbit IgG Polyclonal  
Antibody  
(Catalog: SAA544Rb19)

**[ IMPORTANT NOTE ]**

The kit is designed for research use only, we will not be responsible for any issue if the kit was used in clinical diagnostic or any other procedures.