

**PAA818Mu01**

**Polyclonal Antibody to Death receptor 5 (DR5)**

**Organism Species: *Mus musculus* (Mouse)**

***Instruction manual***

FOR RESEARCH USE ONLY

NOT FOR USE IN CLINICAL DIAGNOSTIC PROCEDURES

---

13th Edition (Revised in Aug, 2023)

**[ PROPERTIES ]**

**Source:** Polyclonal antibody preparation

**Host:** Rabbit

**Purification:** Antigen-specific affinity chromatography followed by Protein A affinity chromatography

**Traits:** Liquid

**Concentration:** 500µg/mL

**UOM:** 1

**Cross Reactivity:** Human, Pocine

**Applications:** WB,IHC

**[ IMMUNOGEN ]**

**Immunogen:** Recombinant DR5 (Asp233~Ala367 (Accession # Q9QZM4)) expressed in *E.coli*

**Accession No.:** RPA818Mu01

**[ APPLICATIONS ]**

Western blotting: 0.01-2µg/mL

Immunohistochemistry: 2-20µg/mL

Immunocytochemistry: 2-20µg/mL

Optimal working dilutions must be determined by end user.

**[ FORMULATION ]**

**Form & Buffer:** Supplied as solution form in 0.01M PBS, pH7.4, containing 0.05% Proclin-300, 50% glycerol.

**[ STORAGE AND STABILITY ]**

**Storage:** Avoid repeated freeze/thaw cycles.

Store at 4°C for frequent use.

Aliquot and store at -20°C for 24 months.

**Stability Test:** The thermal stability is described by the loss rate. The loss rate was determined by accelerated thermal degradation test, that is, incubate the protein at 37°C for 48h, and no obvious degradation and precipitation were observed. The loss rate is less than 5% within the expiration date under appropriate storage condition.

**[ IDENTIFICATION ]**

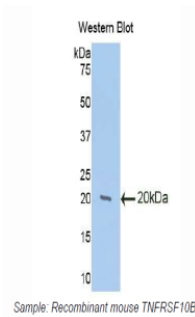
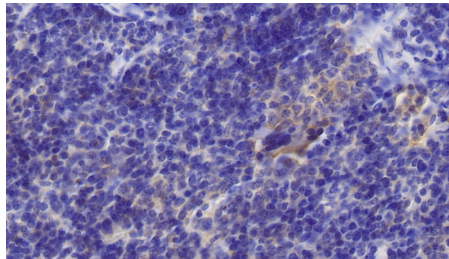
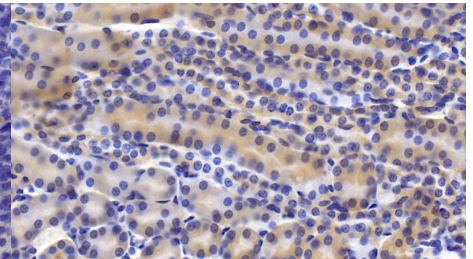


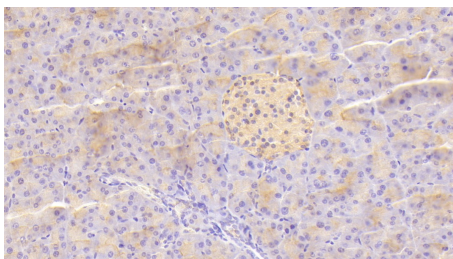
Figure. Western Blot; Sample: Recombinant DR5, Mouse.



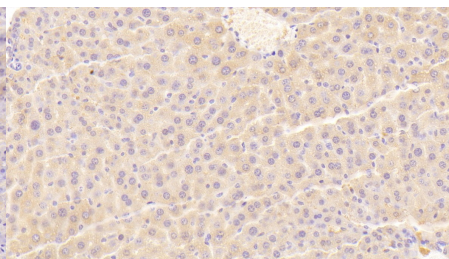
DAB staining on IHC-P; Samples: Mouse Spleen Tissue; Primary Ab: 20µg/ml Rabbit Anti-Mouse TNFRSF10B Antibody Second Ab: 2µg/mL HRP-Linked Caprine Anti-Rabbit IgG Polyclonal Antibody (Catalog: SAA544Rb19)



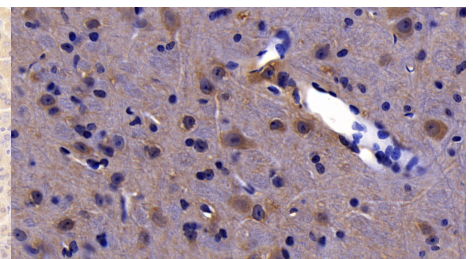
DAB staining on IHC-P; Samples: Mouse Kidney Tissue; Primary Ab: 20µg/ml Rabbit Anti-Mouse TNFRSF10B Antibody Second Ab: 2µg/mL HRP-Linked Caprine Anti-Rabbit IgG Polyclonal Antibody (Catalog: SAA544Rb19)



DAB staining on IHC-P; Samples: Mouse Pancreas Tissue;



DAB staining on IHC-P; Samples: Mouse Liver Tissue;

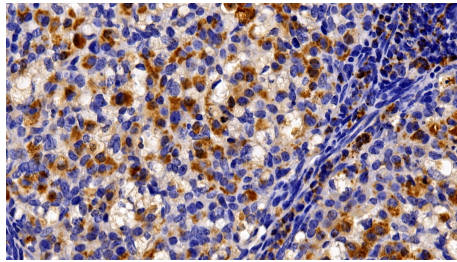


DAB staining on IHC-P; Samples: Mouse Cerebrum Tissue;

Primary Ab: 20?g/ml Rabbit Anti-Mouse Primary Ab: 20?g/ml Rabbit Anti-Mouse Primary Ab: 20?g/ml Rabbit Anti-Mouse

**TNFRSF10B Antibody**

Second Ab: 2µg/mL HRP-Linked  
Caprine Anti-Rabbit IgG Polyclonal  
Antibody  
(Catalog: SAA544Rb19)



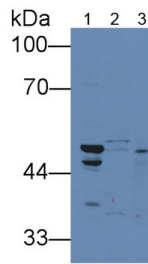
DAB staining on IHC-P;

Sample: Mouse Ovary Tissue;

Primary Ab: 10µg/ml Rabbit Anti-Mouse  
TNFRSF10B Antibody  
Second Ab: 2µg/mL HRP-Linked  
Caprine Anti-Rabbit IgG Polyclonal  
Antibody  
(Catalog: SAA544Rb19)

**TNFRSF10B Antibody**

Second Ab: 2µg/mL HRP-Linked  
Caprine Anti-Rabbit IgG Polyclonal  
Antibody  
(Catalog: SAA544Rb19)

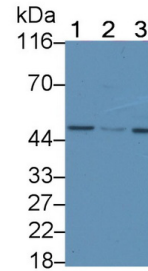


Western Blot; Sample: Lane1: Mouse  
Lung lysate; Lane2: Mouse Kidney  
lysate; Lane3: Fetal mouse lysate

Primary Ab: 2µg/mL Rabbit Anti-Mouse  
TNFRSF10B-2 Antibody  
Second Ab: 0.2µg/mL HRP-Linked  
Caprine Anti-Rabbit IgG Polyclonal  
Antibody  
(Catalog: SAA544Rb19)

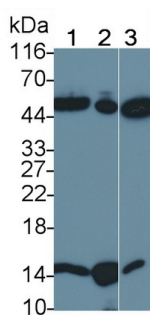
**TNFRSF10B Antibody**

Second Ab: 2µg/mL HRP-Linked  
Caprine Anti-Rabbit IgG Polyclonal  
Antibody  
(Catalog: SAA544Rb19)



Western Blot; Sample: Lane1: HepG2  
cell lysate; Lane2: SW480 cell lysate;  
Lane3: Sp2/0 cell lysate

Primary Ab: 0.2µg/ml Rabbit Anti-  
Mouse DR5 Antibody  
Second Ab: 0.2µg/mL HRP-Linked  
Caprine Anti-Rabbit IgG Polyclonal  
Antibody  
(Catalog: SAA544Rb19)



Western Blot; Sample: Lane1: 3T3-L1  
cell lysate; Lane2: Mouse Lymph node  
lysate; Lane3: Porcine Lymph node  
lysate

Primary Ab: 0.4µg/ml Rabbit Anti-  
Mouse DR5 Antibody

Second Ab: 0.2µg/mL HRP-Linked

Caprine Anti-Rabbit IgG Polyclonal

Antibody

(Catalog: SAA544Rb19)

**[ IMPORTANT NOTE ]**

The kit is designed for research use only, we will not be responsible for any issue if the kit was used in clinical diagnostic or any other procedures.