

PAA868Ra01

Polyclonal Antibody to Endothelial NOS (eNOS)

Organism Species: *Rattus norvegicus* (Rat)

Instruction manual

FOR RESEARCH USE ONLY

NOT FOR USE IN CLINICAL DIAGNOSTIC PROCEDURES

13th Edition (Revised in Aug, 2023)

[PROPERTIES]

Source: Polyclonal antibody preparation

Host: Rabbit

Purification: Antigen-specific affinity chromatography followed by Protein A affinity chromatography

Traits: Liquid

Concentration: 0.5mg/mL

UOM: 100µL

Cross Reactivity: Human;Mouse;Rabbit;Canine;Porcine;Bovine

Applications: WB; IHC; ICC; IP.

[IMMUNOGEN]

Immunogen: Recombinant eNOS (Ala519~Phe702) expressed in *E.coli*

Accession No.: RPA868Ra01

[APPLICATIONS]

Western blotting: 0.01-3µg/mL

Immunohistochemistry: 5-30µg/mL

Immunocytochemistry: 5-30µg/mL

Optimal working dilutions must be determined by end user.

[FORMULATION]

Form & Buffer: Supplied as solution form in 0.01M PBS, pH7.4, containing 0.05% Proclin-300, 50% glycerol.

[STORAGE AND STABILITY]

Storage: Avoid repeated freeze/thaw cycles.

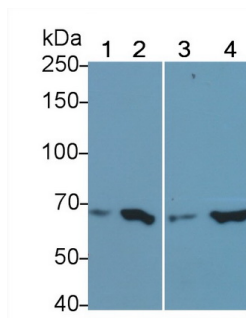
Store at 4°C for frequent use.

Aliquot and store at -20°C for 24 months.

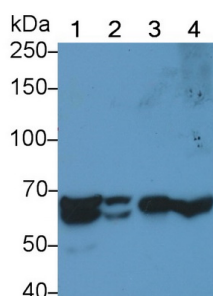
Stability Test: The thermal stability is described by the loss rate. The loss rate was determined by accelerated thermal degradation test, that is, incubate the protein at 37°C for 48h, and no

obvious degradation and precipitation were observed. The loss rate is less than 5% within the expiration date under appropriate storage condition.

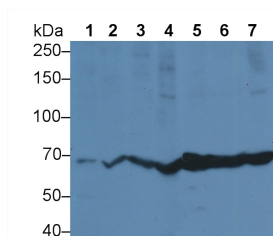
[IDENTIFICATION]



Western Blot; Sample: Lane1: Canine Liver lysate; Lane2: Canine Heart lysate; Lane3: Bovine Liver lysate; Lane4: Bovine Heart lysate Primary Ab: 0.3µg/ml Rabbit Anti-Rat eNOS Antibody Second Ab: 0.2µg/mL HRP-Linked Caprine Anti-Rabbit IgG Polyclonal Antibody (Catalog: SAA544Rb19)



Western Blot; Sample: Lane1: Rat Placenta lysate; Lane2: Mouse Placenta lysate; Lane3: Porcine Liver lysate; Lane4: ECV304 cell lysate Primary Ab: 0.3µg/ml Rabbit Anti-Rat eNOS Antibody Second Ab: 0.2µg/mL HRP-Linked Caprine Anti-Rabbit IgG Polyclonal Antibody (Catalog: SAA544Rb19)



Western Blot; Sample: Lane1: Human Placenta lysate; Lane2: Porcine Heart lysate; Lane3: Porcine Kidney lysate; Lane4: Porcine Liver lysate; Lane5: Rat Placenta lysate; Lane6: Rat Heart lysate; Lane7: Rat Liver lysate Primary Ab: 3µg/ml Rabbit Anti-Rat NOS3 Antibody Second Ab: 0.2µg/mL HRP-Linked Caprine Anti-Rabbit IgG Polyclonal Antibody (Catalog: SAA544Rb19)

[IMPORTANT NOTE]

The kit is designed for research use only, we will not be responsible for any issue if the kit was used in clinical diagnostic or any other procedures.