

PAB860Ra01

Polyclonal Antibody to Fetuin B (FETUB)

Organism Species: *Rattus norvegicus* (Rat)

Instruction manual

FOR RESEARCH USE ONLY

NOT FOR USE IN CLINICAL DIAGNOSTIC PROCEDURES

13th Edition (Revised in Aug, 2023)

[PROPERTIES]

Source: Polyclonal antibody preparation

Host: Rabbit

Purification: Antigen-specific affinity chromatography followed by Protein A affinity chromatography

Traits: Liquid

Concentration: 0.5mg/mL

UOM: 100µL

Cross Reactivity: Human;Mouse

Applications: WB; IHC

[IMMUNOGEN]

Immunogen: Recombinant FETUB (Ser152~Glu261) expressed in *E.coli*

Accession No.: RPB860Ra01

[APPLICATIONS]

Western blotting: 0.01-2µg/mL

Immunohistochemistry: 1-20µg/mL

Immunocytochemistry: 1-20µg/mL

Optimal working dilutions must be determined by end user.

[FORMULATION]

Form & Buffer: Supplied as solution form in 0.01M PBS, pH7.4, containing 0.05% Proclin-300, 50% glycerol.

[STORAGE AND STABILITY]

Storage: Avoid repeated freeze/thaw cycles.

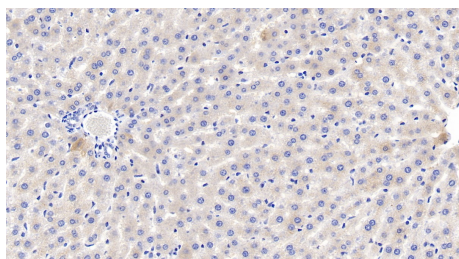
Store at 4°C for frequent use.

Aliquot and store at -20°C for 24 months.

Stability Test: The thermal stability is described by the loss rate. The loss rate was determined by accelerated thermal degradation test, that is, incubate the protein at 37°C for 48h, and no

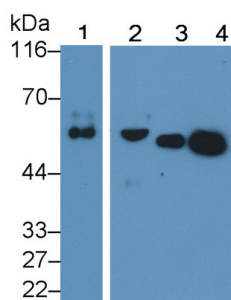
obvious degradation and precipitation were observed. The loss rate is less than 5% within the expiration date under appropriate storage condition.

[IDENTIFICATION]

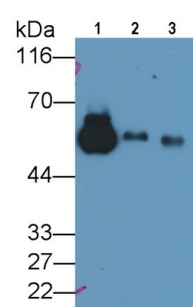


DAB staining on IHC-P; Samples: Rat

Liver Tissue; Primary Ab: 20µg/ml
Rabbit Anti-Rat FETUB Antibody
Second Ab: 2µg/mL HRP-Linked
Caprine Anti-Rabbit IgG Polyclonal
Antibody (Catalog: SAA544Rb19)



Western Blot; Sample: Lane1: Rat
Serum; Lane2: Rat Plasma; Lane3:
Mouse Serum; Lane4: Human Serum
Primary Ab: 0.1?g/ml Rabbit Anti-Rat
FETUB Antibody
Second Ab: 0.2µg/mL HRP-Linked
Caprine Anti-Rabbit IgG Polyclonal
Antibody
(Catalog: SAA544Rb19)



Western Blot; Sample: Lane1: Rat
Serum; Lane2: Rat Lung lysate; Lane3:
Rat Liver lysate
Primary Ab: 0.1µg/ml Rabbit Anti-Rat
FETUB Antibody
Second Ab: 0.2µg/mL HRP-Linked
Caprine Anti-Rabbit IgG Polyclonal
Antibody
(Catalog: SAA544Rb19)

[IMPORTANT NOTE]

The kit is designed for research use only, we will not be responsible for any issue if the kit was used in clinical diagnostic or any other procedures.