

PAB215Hu01

Polyclonal Antibody to Fibrinogen Beta Chain (FGB)

Organism Species: *Homo sapiens (Human)*

Instruction manual

FOR RESEARCH USE ONLY

NOT FOR USE IN CLINICAL DIAGNOSTIC PROCEDURES

13th Edition (Revised in Aug, 2023)

[PROPERTIES]

Source: Polyclonal antibody preparation

Host: Rabbit

Purification: Antigen-specific affinity chromatography followed by Protein A affinity chromatography

Traits: Liquid

Concentration: 0.5mg/mL

UOM: 100µL

Cross Reactivity: Mouse;Porcine

Applications: WB; IHC; ICC/IF;FCM

[IMMUNOGEN]

Immunogen: Recombinant FGB (Gly45~Gln491) expressed in *E.coli*

Accession No.: RPB215Hu01

[APPLICATIONS]

Western blotting: 0.01-2?g/mL;

Immunohistochemistry: 5-20?g/mL;

Immunocytochemistry: 5-20?g/mL;

Flow cytometry:20?g/mL;

Optimal working dilutions must be determined by end user.

[FORMULATION]

Form & Buffer: Supplied as solution form in 0.01M PBS, pH7.4, containing 0.05% Proclin-300, 50% glycerol.

[STORAGE AND STABILITY]

Storage: Avoid repeated freeze/thaw cycles.

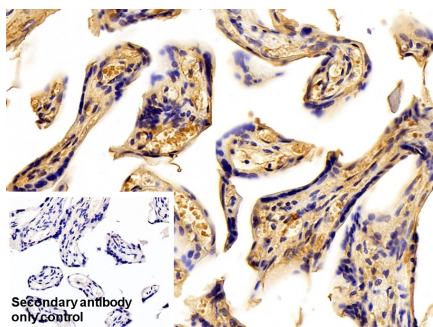
Store at 4°C for frequent use.

Aliquot and store at -20°C for 24 months.

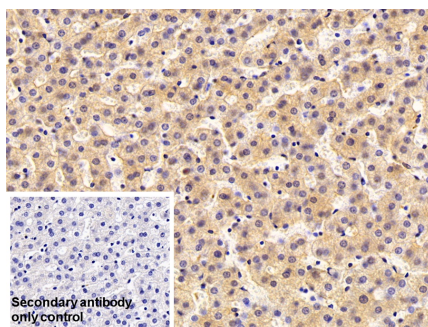
Stability Test: The thermal stability is described by the loss rate. The loss rate was determined

by accelerated thermal degradation test, that is, incubate the protein at 37°C for 48h, and no obvious degradation and precipitation were observed. The loss rate is less than 5% within the expiration date under appropriate storage condition.

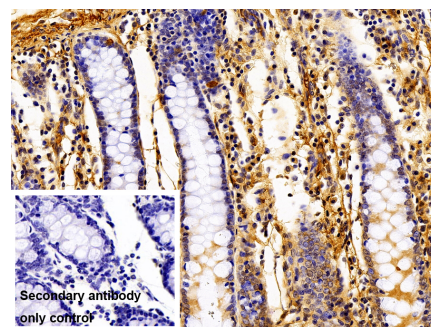
[IDENTIFICATION]



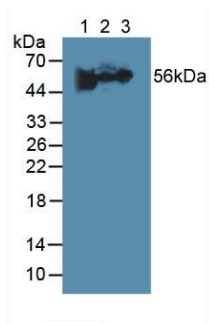
DAB staining on IHC-P; Sample:
Human Placenta Tissue Primary Ab:
10µg/ml Rabbit Anti-Human FGB
Antibody Control: Used PBS instead of
primary antibody Second Ab: 2?g/ml
HRP-Linked Caprine Anti-Rabbit IgG
Polyclonal Antibody (Catalog:
SAA544Rb19)



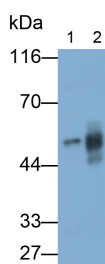
DAB staining on IHC-P;
Sample: Porcine Liver Tissue
Primary Ab: 10µg/ml Rabbit Anti-
Human FGB Antibody
Control: Used PBS instead of primary
antibody
Second Ab: 2?g/ml HRP-Linked
Caprine Anti-Rabbit IgG Polyclonal
Antibody
(Catalog: SAA544Rb19)



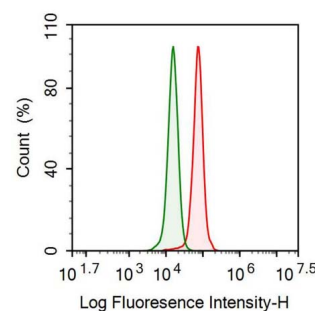
DAB staining on IHC-P;
Sample: Porcine Colon Tissue
Primary Ab: 10µg/ml Rabbit Anti-
Human FGB Antibody
Control: Used PBS instead of primary
antibody
Second Ab: 2?g/ml HRP-Linked
Caprine Anti-Rabbit IgG Polyclonal
Antibody
(Catalog: SAA544Rb19)



Western Blot; Samples: Lane1: Human
Urine; Lane2: Mouse Heart lysate;
Lane3: Porcine Cerebrum lysate;
Primary Ab: 2µg/ml Rabbit Anti-Human
FGB Antibody
Second Ab: 0.2?g/ml HRP-Linked



Western Blot; Samples: Lane1: Mouse
Heart lysate; Lane2: Porcine Liver
lysate;
Primary Ab: 0.2µg/ml Rabbit Anti-
Human FGB Antibody
Second Ab: 0.2?g/ml HRP-Linked



Human HepG2 cell was fixed with 2%
paraformaldehyde (10 min) ,
permeabilised with 0.1% BSA-Triton
X-100, then stained with 20µg/ml rabbit
Anti-human FGB Polyclonal Antibody
(Catalog PAB215Hu01, red histogram)

Caprine Anti-Rabbit IgG Polyclonal
Antibody
(Catalog: SAA544Rb19)

Caprine Anti-Rabbit IgG Polyclonal
Antibody
(Catalog: SAA544Rb19)

or Isotype control antibody (Catalog
IS067-Rb01, green histogram), followed
by 1µg/ml FITC-conjugated Anti-rabbit
IgG Secondary Antibody (Catalog
SAA544Rb18).

[IMPORTANT NOTE]

The kit is designed for research use only, we will not be responsible for any issue if the kit was used in clinical diagnostic or any other procedures.