

**PAJ076Hu01**

**Polyclonal Antibody to Galactose-3-O-Sulfotransferase 1 (GAL3ST1)**

**Organism Species: *Homo sapiens (Human)***

***Instruction manual***

**FOR RESEARCH USE ONLY**

**NOT FOR USE IN CLINICAL DIAGNOSTIC PROCEDURES**

---

13th Edition (Revised in Aug, 2023)

## **[ PROPERTIES ]**

**Source:** Polyclonal antibody preparation

**Host:** Rabbit

**Purification:** Antigen-specific affinity chromatography followed by Protein A affinity chromatography

**Traits:** Liquid

**Concentration:** 0.5mg/mL

**UOM:** 50µL

**Cross Reactivity:** Mouse

**Applications:** WB; ICC; IHC-P; IHC-F; ELISA.

## **[ IMMUNOGEN ]**

**Immunogen:** Recombinant GAL3ST1 (Leu57~Phe196) expressed in *E.coli*

**Accession No.:** RPJ076Hu01

## **[ APPLICATIONS ]**

Western blotting: 0.01-5µg/mL;

Immunohistochemistry: 5-50µg/mL;

Immunocytochemistry: 5-50µg/mL;

Optimal working dilutions must be determined by end user.

## **[ FORMULATION ]**

**Form & Buffer:** Supplied as solution form in PBS, pH7.4, containing 0.02% NaN<sub>3</sub>, 50% glycerol.

## **[ STORAGE AND STABILITY ]**

**Storage:** Avoid repeated freeze/thaw cycles.

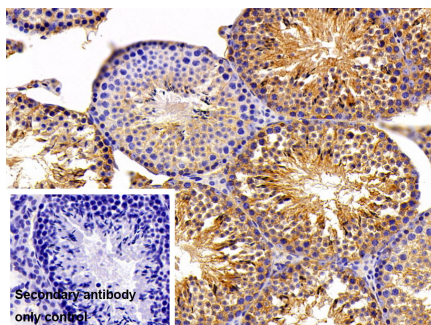
Store at 4°C for frequent use.

Aliquot and store at -20°C for 24 months.

**Stability Test:** The thermal stability is described by the loss rate. The loss rate was determined by accelerated thermal degradation test, that is, incubate the protein at 37°C for 48h, and no

obvious degradation and precipitation were observed. The loss rate is less than 5% within the expiration date under appropriate storage condition.

## [ IDENTIFICATION ]



DAB staining on IHC-P;

Sample: Mouse Testis Tissue

Primary Ab: 10µg/ml Rabbit Anti-

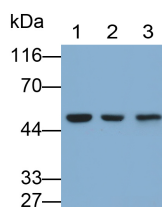
Human GAL3ST1 Antibody

Control: Used PBS instead of primary antibody

Second Ab: 2?g/ml HRP-Linked

Caprine Anti-Rabbit IgG Polyclonal Antibody

(Catalog: SAA544Rb19)



Western Blot; Samples: Lane1: Mouse Testis lysate; Lane2: Mouse Cerebrum Cerebrum lysate; Lane2: Mouse Lymph node lysate;

lysate; Lane3: Mouse Lymph node

lysate;

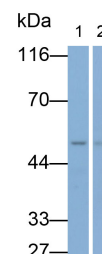
Primary Ab: 0.4µg/ml Rabbit Anti-

Human GAL3ST1 Antibody

Second Ab: 0.2?g/ml HRP-Linked

Caprine Anti-Rabbit IgG Polyclonal Antibody

(Catalog: SAA544Rb19)



Western Blot; Samples: Lane1: Mouse Testis lysate; Lane2: Mouse Cerebrum Cerebrum lysate; Lane2: Mouse Lymph node lysate;

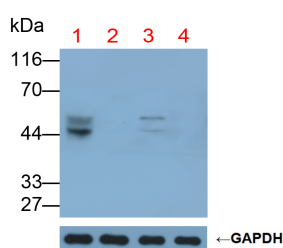
Primary Ab: 0.2µg/ml Rabbit Anti-

Human GAL3ST1 Antibody

Second Ab: 0.2?g/ml HRP-Linked Caprine Anti-Rabbit IgG Polyclonal

Antibody

(Catalog: SAA544Rb19)



Western Blot; Samples: Lane1:

GAL3ST1 transfected 293F cell lysate;

Lane2: 293F cell lysate?negative

control?; Lane3: SGC7901 cell lysate;

Lane4: Raji cell lysate;

Primary Ab: 0.4µg/ml Rabbit Anti-

Human GAL3ST1 Antibody

Second Ab: 0.2?g/ml HRP-Linked

Caprine Anti-Rabbit IgG Polyclonal

Antibody

(Catalog: SAA544Rb19)

### **[ IMPORTANT NOTE ]**

The kit is designed for research use only, we will not be responsible for any issue if the kit was used in clinical diagnostic or any other procedures.