

PAA303Hu01

Polyclonal Antibody to Galectin 3 (GAL3)

Organism Species: *Homo sapiens* (Human)

Instruction manual

FOR RESEARCH USE ONLY

NOT FOR USE IN CLINICAL DIAGNOSTIC PROCEDURES

12th Edition (Revised in Aug, 2016)

[**PROPERTIES**]

Source: Polyclonal antibody preparation

Host: Rabbit

Purification: Antigen-specific affinity chromatography followed by Protein A affinity chromatography

Traits: Liquid

Concentration: 0.8mg/ml

UOM: 100µl

Cross Reactivity: Rat;Porcine

Applications: WB; IHC; IF

[**IMMUNOGEN**]

Immunogen: Recombinant GAL3 (Met1~Ile250) expressed in *E.coli*

Accession No.: RPA303Hu01

[**APPLICATIONS**]

Western blotting: 0.1-2µg/mL;

Immunohistochemistry: 5-20µg/mL;

Immunofluorescence:5-20µg/mL;

Optimal working dilutions must be determined by end user.

[**FORMULATION**]

Form & Buffer: Supplied as solution form in 0.01M PBS, pH7.4, containing 0.05% Proclin-300, 50% glycerol.

[**STORAGE AND STABILITY**]

Storage: Avoid repeated freeze/thaw cycles.

Store at 4°C for frequent use.

Aliquot and store at -20°C for 24 months.

Stability Test: The thermal stability is described by the loss rate. The loss rate was determined by accelerated thermal degradation test, that is, incubate the protein at 37°C for 48h, and no

obvious degradation and precipitation were observed. The loss rate is less than 5% within the expiration date under appropriate storage condition.

[IDENTIFICATION]

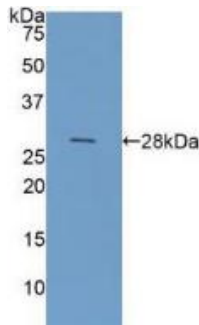
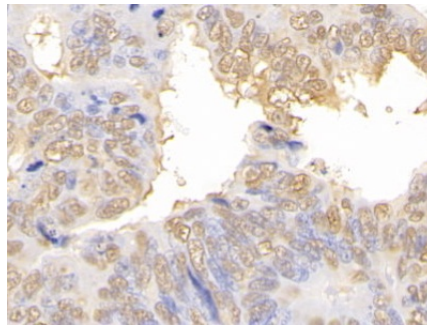
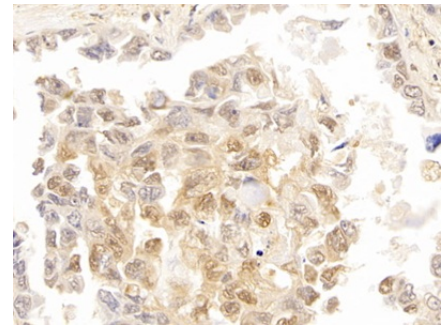


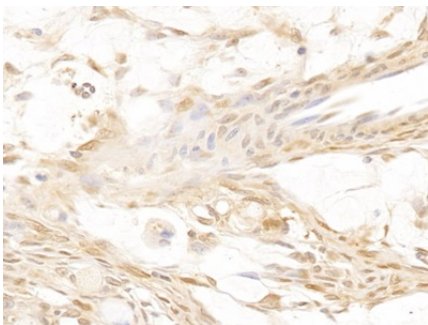
Figure. Western Blot; Sample: Recombinant GAL3, Human.



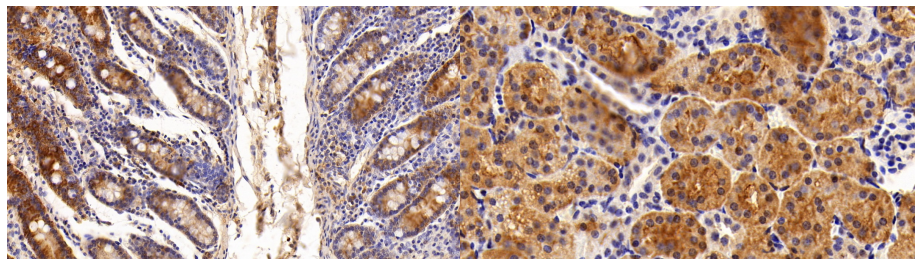
DAB staining on IHC-P; Samples: Human Colorectal cancer Tissue; Primary Ab: 10ug/ml Rabbit Anti-Human GAL3 Antibody Second Ab: 2µg/mL HRP-Linked Caprine Anti-Rabbit IgG Polyclonal Antibody (Catalog: SAA544Rb19)



DAB staining on IHC-P; Samples: Human Lung cancer Tissue; Primary Ab: 10ug/ml Rabbit Anti-Human GAL3 Antibody Second Ab: 2µg/mL HRP-Linked Caprine Anti-Rabbit IgG Polyclonal Antibody (Catalog: SAA544Rb19)

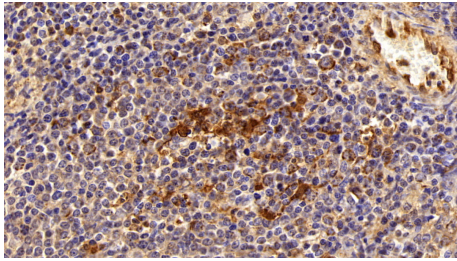


DAB staining on IHC-P; Samples: Human Ovarian cancer Tissue; Primary Ab: 10ug/ml Rabbit Anti-Human GAL3 Antibody Second Ab: 2µg/mL HRP-Linked Caprine Anti-Rabbit IgG Polyclonal Antibody (Catalog: SAA544Rb19)



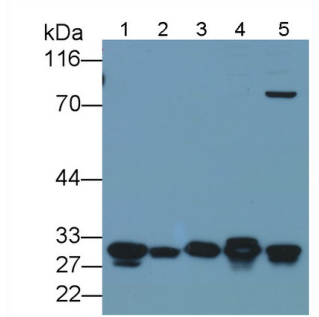
DAB staining on IHC-P; Sample: Porcine Small intestine Tissue; Primary Ab: 10?g/ml Rabbit Anti-Human GAL3 Antibody Second Ab: 2µg/mL HRP-Linked Caprine Anti-Rabbit IgG Polyclonal Antibody (Catalog: SAA544Rb19)

DAB staining on IHC-P; Sample: Porcine Kidney Tissue; Primary Ab: 10?g/ml Rabbit Anti-Human GAL3 Antibody Second Ab: 2µg/mL HRP-Linked Caprine Anti-Rabbit IgG Polyclonal Antibody (Catalog: SAA544Rb19)

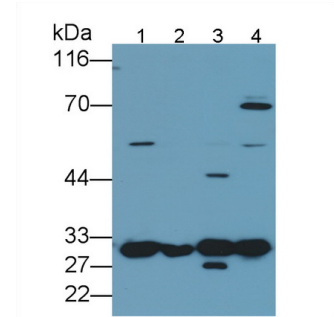


DAB staining on IHC-P;

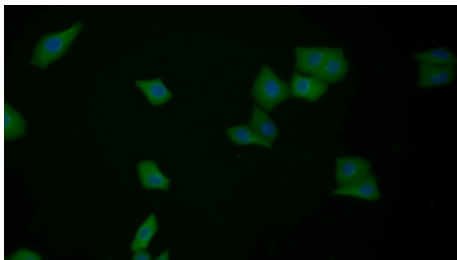
Sample: Porcine Spleen Tissue;
 Primary Ab: 10 μ g/ml Rabbit Anti-Human GAL3 Antibody
 Second Ab: 2 μ g/mL HRP-Linked Caprine Anti-Rabbit IgG Polyclonal Antibody
 (Catalog: SAA544Rb19)



Western Blot; Sample: Lane1: Rat Mammary gland lysate; Lane2: Rat Small intestine lysate; Lane3: Rat Skin lysate; Lane4: HeLa cell lysate; Lane5: MCF7 cell lysate
 Primary Ab: 0.2 μ g/ml Rabbit Anti-Human GAL3 Antibody
 Second Ab: 0.2 μ g/mL HRP-Linked Caprine Anti-Rabbit IgG Polyclonal Antibody
 (Catalog: SAA544Rb19)



Western Blot; Sample: Lane1: Rat Lung lysate; Lane2: Rat Colon lysate; Lane3: Rat Testis lysate; Lane4: A375 cell lysate
 Primary Ab: 0.1 μ g/ml Rabbit Anti-Human GAL3 Antibody
 Second Ab: 0.2 μ g/mL HRP-Linked Caprine Anti-Rabbit IgG Polyclonal Antibody
 (Catalog: SAA544Rb19)



FITC staining on IF;

Samples: Human MCF7 cell;
 Primary Ab: 20 μ g/ml Rabbit Anti-Human GAL3 Antibody
 Second Ab: 1 μ g/ml FITC-Linked Caprine Anti-Rabbit IgG Polyclonal Antibody
 (Catalog: SAA544Rb18)

[IMPORTANT NOTE]

The kit is designed for research use only, we will not be responsible for any issue if the kit was used in clinical diagnostic or any other procedures.