

**PAA303Mu01**

**Polyclonal Antibody to Galectin 3 (GAL3)**

**Organism Species: *Mus musculus* (Mouse)**

***Instruction manual***

**FOR RESEARCH USE ONLY**

**NOT FOR USE IN CLINICAL DIAGNOSTIC PROCEDURES**

---

13th Edition (Revised in Aug, 2023)

## **[ PROPERTIES ]**

**Source:** Polyclonal antibody preparation

**Host:** Rabbit

**Purification:** Antigen-specific affinity chromatography followed by Protein A affinity chromatography

**Traits:** Liquid

**Concentration:** 0.49mg/mL

**UOM:** 50µL

**Cross Reactivity:** N/A

**Applications:** WB; IHC; ICC; IP.

## **[ IMMUNOGEN ]**

**Immunogen:** Recombinant GAL3 (Ala2 ~Ile264) expressed in *E.coli*

**Accession No.:** RPA303Mu01

## **[ APPLICATIONS ]**

Western blotting: 0.01-2µg/mL

Immunohistochemistry: 5-20µg/mL

Immunocytochemistry: 5-20µg/mL

Optimal working dilutions must be determined by end user.

## **[ FORMULATION ]**

**Form & Buffer:** Supplied as solution form in PBS, pH7.4, containing 0.02% NaN<sub>3</sub>, 50% glycerol.

## **[ STORAGE AND STABILITY ]**

**Storage:** Avoid repeated freeze/thaw cycles.

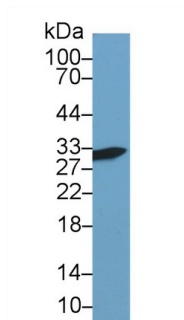
Store at 4°C for frequent use.

Aliquot and store at -20°C for 24 months.

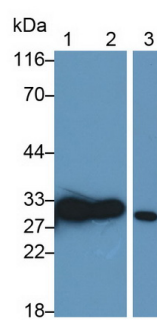
**Stability Test:** The thermal stability is described by the loss rate. The loss rate was determined by accelerated thermal degradation test, that is, incubate the protein at 37°C for 48h, and no

obvious degradation and precipitation were observed. The loss rate is less than 5% within the expiration date under appropriate storage condition.

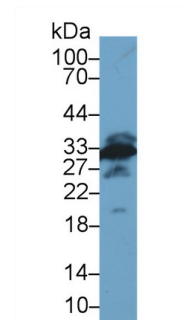
## [ IDENTIFICATION ]



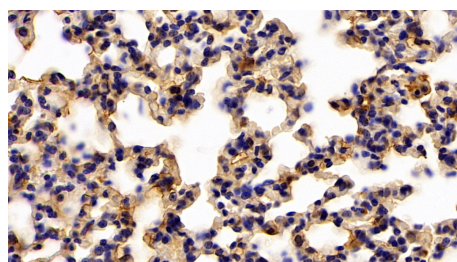
Western Blot; Sample: Human Hela cell  
lysate;  
Primary Ab: 1µg/ml Rabbit Anti-Mouse  
GAL3 Antibody  
Second Ab: 0.2µg/mL HRP-Linked  
Caprine Anti-Rabbit IgG Polyclonal  
Antibody  
(Catalog: SAA544Rb19)



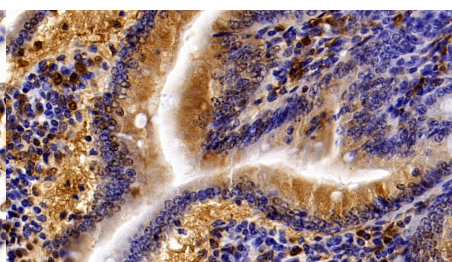
Western Blot; Sample: Lane1: Mouse  
Lung lysate; Lane2: Mouse Spleen  
lysate; Lane3: Hela cell lysate  
Primary Ab: 0.03µg/ml Rabbit Anti-  
Mouse GAL3 Antibody  
Second Ab: 0.2µg/mL HRP-Linked  
Caprine Anti-Rabbit IgG Polyclonal  
Antibody  
(Catalog: SAA544Rb19)



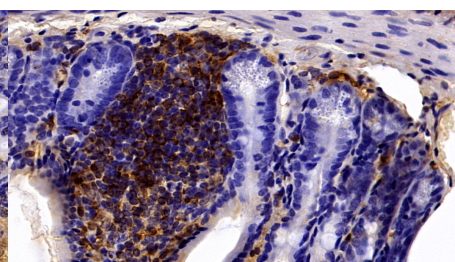
Western Blot; Sample: Mouse Testis  
lysate;  
Primary Ab: 1µg/ml Rabbit Anti-Mouse  
GAL3 Antibody  
Second Ab: 0.2µg/mL HRP-Linked  
Caprine Anti-Rabbit IgG Polyclonal  
Antibody  
(Catalog: SAA544Rb19)



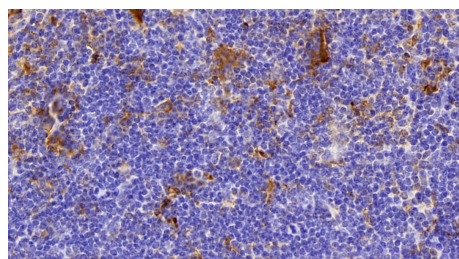
DAB staining on IHC-P;  
Samples: Mouse Lung Tissue;  
Primary Ab: 20µg/ml Rabbit Anti-Mouse  
GAL3 Antibody  
Second Ab: 2µg/mL HRP-Linked  
Caprine Anti-Rabbit IgG Polyclonal  
Antibody  
(Catalog: SAA544Rb19)



DAB staining on IHC-P;  
Samples: Mouse Small Intestine  
Tissue;  
Primary Ab: 20µg/ml Rabbit Anti-Mouse  
GAL3 Antibody  
Second Ab: 2µg/mL HRP-Linked  
Caprine Anti-Rabbit IgG Polyclonal  
Antibody  
(Catalog: SAA544Rb19)



DAB staining on IHC-P;  
Samples: Mouse Colon Tissue;  
Primary Ab: 20µg/ml Rabbit Anti-Mouse  
GAL3 Antibody  
Second Ab: 2µg/mL HRP-Linked  
Caprine Anti-Rabbit IgG Polyclonal  
Antibody  
(Catalog: SAA544Rb19)



DAB staining on IHC-P;

Samples: Mouse Spleen Tissue;

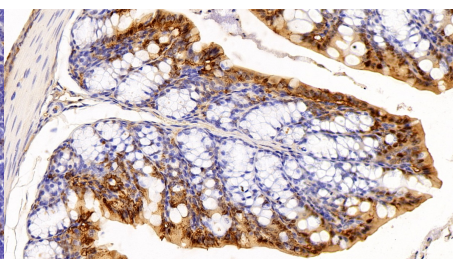
Primary Ab: 20µg/ml Rabbit Anti-Mouse

GAL3 Antibody

Second Ab: 2µg/mL HRP-Linked

Caprine Anti-Rabbit IgG Polyclonal  
Antibody

(Catalog: SAA544Rb19)



DAB staining on IHC-P;

Sample: Mouse Colon Tissue;

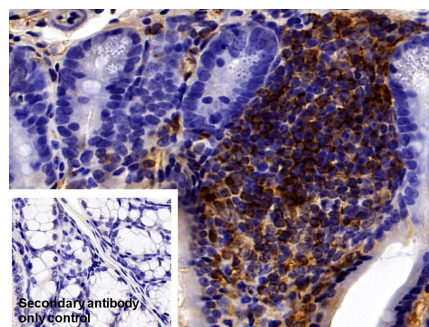
Primary Ab: 20µg/ml Rabbit Anti-Mouse

GAL3 Antibody

Second Ab: 2µg/mL HRP-Linked

Caprine Anti-Rabbit IgG Polyclonal  
Antibody

(Catalog: SAA544Rb19)



DAB staining on IHC-P;

Sample: Mouse Colon Tissue

Primary Ab: 20µg/ml Rabbit Anti-Mouse

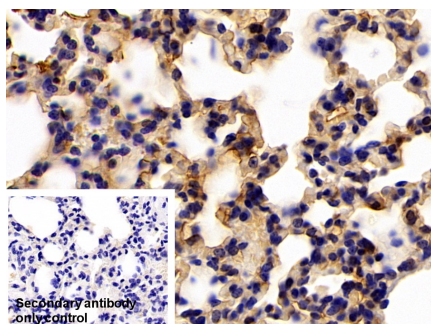
GAL3 Antibody

Control: Used PBS instead of primary  
antibody

Second Ab: 2µg/ml HRP-Linked  
Caprine Anti-Rabbit IgG Polyclonal

Antibody

(Catalog: SAA544Rb19)



DAB staining on IHC-P;

Sample: Mouse Lung Tissue

Primary Ab: 20µg/ml Rabbit Anti-Mouse

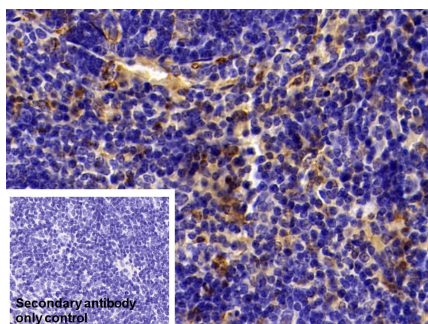
GAL3 Antibody

Control: Used PBS instead of primary  
antibody

Second Ab: 2µg/ml HRP-Linked

Caprine Anti-Rabbit IgG Polyclonal  
Antibody

(Catalog: SAA544Rb19)



DAB staining on IHC-P;

Sample: Mouse Spleen Tissue

Primary Ab: 20µg/ml Rabbit Anti-Mouse

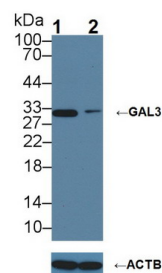
GAL3 Antibody

Control: Used PBS instead of primary  
antibody

Second Ab: 2µg/ml HRP-Linked

Caprine Anti-Rabbit IgG Polyclonal  
Antibody

(Catalog: SAA544Rb19)



Knockout Varification:

Lane 1: Wild-type HeLa cell lysate;

Lane 2: GAL3 knockout HeLa cell  
lysate;

Predicted MW: 27kDa

Observed MW: 32kDa

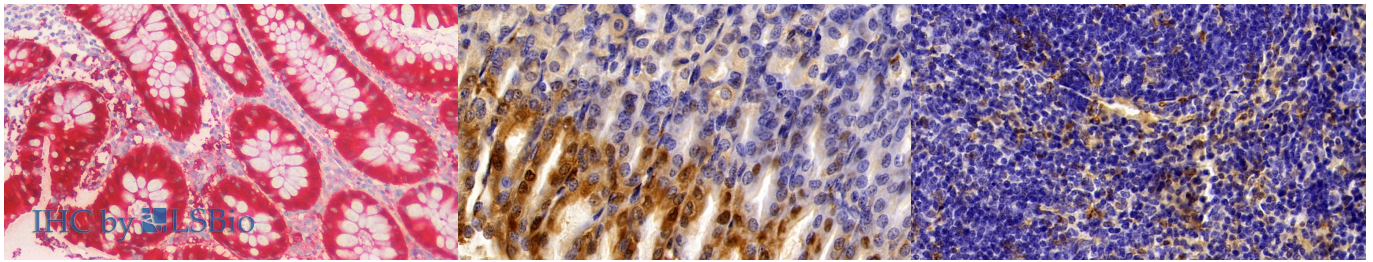
Primary Ab: 1µg/ml Rabbit Anti-Mouse  
GAL3 Antibody

Second Ab: 0.2µg/mL HRP-Linked  
Caprine Anti-Rabbit IgG Polyclonal

Antibody



(Catalog: SAA544Rb19)



Vector Red staining on IHC-P;

Samples: Human Colon Tissue;

Primary Ab: Rabbit Anti-Mouse GAL3 Antibody (Dilution ratio 1:100) Second

Ab: 2µg/mL HRP-Linked Caprine Anti-Rabbit IgG Polyclonal Antibody

DAB staining on IHC-P;

Samples: Mouse Stomach Tissue;

Primary Ab: 20µg/ml Rabbit Anti-Mouse GAL3 Antibody

Second Ab: 2µg/mL HRP-Linked Caprine Anti-Rabbit IgG Polyclonal Antibody

(Catalog: SAA544Rb19)

DAB staining on IHC-P;

Samples: Mouse Spleen Tissue;

Primary Ab: 20µg/ml Rabbit Anti-Mouse GAL3 Antibody

Second Ab: 2µg/mL HRP-Linked Caprine Anti-Rabbit IgG Polyclonal Antibody

(Catalog: SAA544Rb19)

## [ **IMPORTANT NOTE** ]

The kit is designed for research use only, we will not be responsible for any issue if the kit was used in clinical diagnostic or any other procedures.