

**PAH975Hu01**  
**Polyclonal Antibody**  
**To Glycosylphosphatidylinositol Specific Phospholipase D1 (GPLD1)**  
**Organism Species: Homo sapiens (Human)**  
*Instruction manual*

FOR IN VITRO USE AND RESEARCH USE ONLY  
NOT FOR USE IN CLINICAL DIAGNOSTIC PROCEDURES

---

---

9th Edition (Revised in Jul, 2013)

## **[ PRODUCT INFORMATION ]**

**Immunogen:** GPLD1, Human

**Clonality:** Polyclonal

**Host:** Rabbit

**Immunoglobulin Type:** IgG

**Purification:** Affinity Chromatography.

**Applications:** WB, ICC, IHC-P, IHC-F, ELISA

**Concentration:** 200µg/mL

**UOM:** 100µg

## **[ IMMUNOGEN INFORMATION ]**

**Immunogen:** Recombinant GPLD1 (Met496~Asp840) expressed in *E.coli*.

**Accession No.:** RPH975Hu01

**Sequence:** The target protein is fused with two N-terminal Tags, His-tag and T7-tag and its sequence is listed below.

MGSSHHHHHHH SSGLVPRGSH MASMTGGQQM GRGSEF- MSSSP NITISCQDIY  
CNLGWTLAA DVNGDSEPD L VIGSPFAPGG GKQKGIVAAF YSGPSLSDKE KLNVEANWT  
VRGEEDFSWF GYSLHGVTVD NRTLLLVGSP TWKNASRLGH LLHIRDEKKS LGRVYGYFPP  
NGQSWFTISG DKAMGKLGTS LSSGHVLMNG TLKQVLLVGA PTYDDVSKVA FLTVTLHQGG  
ATRMALYALTS AQPLLLSTFS GDRRFSRFGG VLHLSDLDDD GLDEIIMAAP LRIADVTSG L  
IGGEDGRVYV YNGKETT LGD MTGKCKSWIT PCPEEKAQYV LISPEASSRF GSSLITVRSK  
AKNQVIAAG RSSLGARLSG ALHVYSLGSD

## **[ ANTIBODY SPECIFICITY ]**

The antibody is a rabbit polyclonal antibody raised against GPLD1. It has been selected for its ability to recognize GPLD1 in immunohistochemical staining and western blotting.

## **[ APPLICATIONS ]**

Western blotting: 1:50-400

Immunocytochemistry in formalin fixed cells: 1:50-500

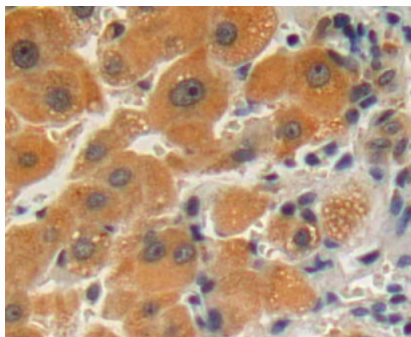
Immunohistochemistry in formalin fixed frozen section: 1:50-500

Immunohistochemistry in paraffin section: 1:10-100

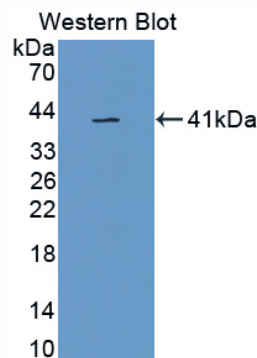
Enzyme-linked Immunosorbent Assay: 1:100-200

Optimal working dilutions must be determined by end user.

## [ IMAGES ]



Used in DAB staining on formalin fixed  
paraffin-embedded liver tissue



Used in Western Blot, Sample:  
Recombinant GPLD1, Human

## [ CONTENTS ]

**Form & Buffer:** Supplied as solution form in PBS, pH7.4, containing 0.02%  $\text{NaN}_3$ , 50% glycerol.

## [ QUALITY CONTROL ]

**Content:** The quality control contains recombinant GPLD1 (Met496~Asp840) disposed in loading buffer.

**Usage:** 10uL per well when 3,3'-Diaminobenzidine(DAB) as the substrate.  
5uL per well when used in enhanced chemiluminescent (ECL).

**Note:** The quality control is specifically manufactured as the positive control. Not used for other purposes.

**Loading Buffer:** 100mM Tris(pH8.8), 2% SDS, 200mM NaCl, 50% glycerol, BPB 0.01%,  $\text{NaN}_3$  0.02%.

## [ STORAGE ]

Store at 4°C for frequent use. Stored at -20°C to -80°C in a manual defrost freezer for one year without detectable loss of activity. Avoid repeated freeze-thaw cycles.