

PAA301Mu01

Polyclonal Antibody to Heat Shock 70kDa Protein 1B (HSPA1B)

Organism Species: *Mus musculus* (Mouse)

Instruction manual

FOR RESEARCH USE ONLY

NOT FOR USE IN CLINICAL DIAGNOSTIC PROCEDURES

13th Edition (Revised in Aug, 2023)

[PROPERTIES]

Source: Polyclonal antibody preparation

Host: Rabbit

Purification: Antigen-specific affinity chromatography followed by Protein A affinity chromatography

Traits: Liquid

Concentration: 0.5mg/ml

UOM: 100µl

Cross Reactivity: Human.

Applications: WB,IHC,ICC/IF

[IMMUNOGEN]

Immunogen: Recombinant HSPA1B (Met1~Asp642) expressed in *E.coli*

Accession No.: RPA301Mu01

[APPLICATIONS]

Western blotting: 0.01-2µg/mL;

Immunohistochemistry: 5-20µg/mL;

Immunofluorescence:5-20µg/mL;

Optimal working dilutions must be determined by end user.

[FORMULATION]

Form & Buffer: Supplied as solution form in 0.01M PBS, pH7.4, containing 0.05% Proclin-300, 50% glycerol.

[STORAGE AND STABILITY]

Storage: Avoid repeated freeze/thaw cycles.

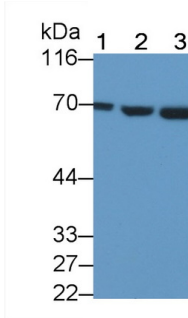
Store at 4°C for frequent use.

Aliquot and store at -20°C for 24 months.

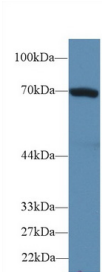
Stability Test: The thermal stability is described by the loss rate. The loss rate was determined by accelerated thermal degradation test, that is, incubate the protein at 37°C for 48h, and no

obvious degradation and precipitation were observed. The loss rate is less than 5% within the expiration date under appropriate storage condition.

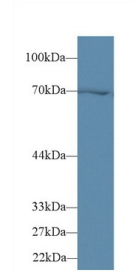
[IDENTIFICATION]



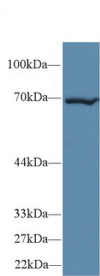
Western Blot; Sample: Lane1: MCF7 cell lysate; Lane2: Mouse Kidney lysate; Lane3: Mouse Testis lysate
 Primary Ab: 0.1µg/ml Rabbit Anti-Mouse HSPA1B Antibody
 Second Ab: 0.2µg/mL HRP-Linked Caprine Anti-Rabbit IgG Polyclonal Antibody
 (Catalog: SAA544Rb19) Selected



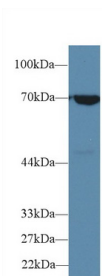
Western Blot; Sample: HepG2 cell lysate;
 Primary Ab: 2µg/ml Rabbit Anti-Mouse HSPA1B Antibody
 Second Ab: 0.2µg/mL HRP-Linked Caprine Anti-Rabbit IgG Polyclonal Antibody
 (Catalog: SAA544Rb19) Selected



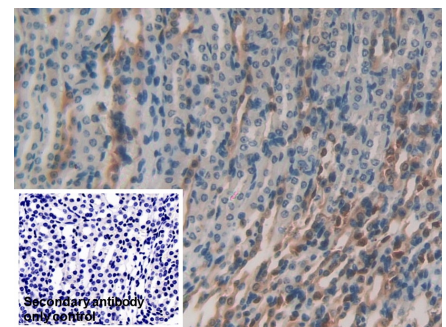
Western Blot; Sample: Mouse Cerebrum lysate;
 Primary Ab: 2µg/ml Rabbit Anti-Mouse HSPA1B Antibody
 Second Ab: 0.2µg/mL HRP-Linked Caprine Anti-Rabbit IgG Polyclonal Antibody
 (Catalog: SAA544Rb19) Selected



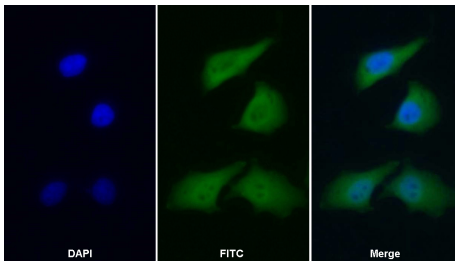
Western Blot; Sample: Mouse Liver lysate;
 Primary Ab: 2µg/ml Rabbit Anti-Mouse HSPA1B Antibody
 Second Ab: 0.2µg/mL HRP-Linked Caprine Anti-Rabbit IgG Polyclonal Antibody
 (Catalog: SAA544Rb19) Selected



Western Blot; Sample: A549 cell lysate;
 Primary Ab: 2µg/ml Rabbit Anti-Mouse HSPA1B Antibody
 Second Ab: 0.2µg/mL HRP-Linked Caprine Anti-Rabbit IgG Polyclonal Antibody
 (Catalog: SAA544Rb19) Selected



DAB staining on IHC-P; Samples: Mouse Kidney Tissue;
 Primary Ab: 20µg/ml Rabbit Anti-Mouse HSPA1B Antibody
 Second Ab: 2µg/mL HRP-Linked Caprine Anti-Rabbit IgG Polyclonal Antibody
 (Catalog: SAA544Rb19)



FITC staining on IF;

Samples: Human HepG2 cell;

Primary Ab: 20µg/ml Rabbit Anti-Mouse

HSPA1B Antibody

Second Ab: 1.5µg/ml FITC-Linked

Caprine Anti-Rabbit IgG Polyclonal

Antibody

(Catalog: SAA544Rb18)

[**IMPORTANT NOTE**]

The kit is designed for research use only, we will not be responsible for any issue if the kit was used in clinical diagnostic or any other procedures.