

PAA693Hu01

Polyclonal Antibody to Heat Shock Protein 27 (Hsp27)

Organism Species: *Homo sapiens (Human)*

Instruction manual

FOR RESEARCH USE ONLY

NOT FOR USE IN CLINICAL DIAGNOSTIC PROCEDURES

13th Edition (Revised in Aug, 2023)

[PROPERTIES]

Source: Polyclonal antibody preparation

Host: Rabbit

Purification: Antigen-specific affinity chromatography followed by Protein A affinity chromatography

Traits: Liquid

Concentration: 0.5mg/mL

UOM: 100µl

Cross Reactivity: Porcine

Applications: WB,IHC,ICC/IF

[IMMUNOGEN]

Immunogen: Recombinant Hsp27 (Thr2~Lys205) expressed in *E.coli*

Accession No.: RPA693Hu01

[APPLICATIONS]

Western blotting: 0.01-3µg/mL;

Immunohistochemistry: 5-20µg/mL;

Immunofluorescence:5-30µg/mL;

Optimal working dilutions must be determined by end user.

[FORMULATION]

Form & Buffer: Supplied as solution form in 0.01M PBS, pH7.4, containing 0.05% Proclin-300, 50% glycerol.

[STORAGE AND STABILITY]

Storage: Avoid repeated freeze/thaw cycles.

Store at 4°C for frequent use.

Aliquot and store at -20°C for 24 months.

Stability Test: The thermal stability is described by the loss rate. The loss rate was determined by accelerated thermal degradation test, that is, incubate the protein at 37°C for 48h, and no

obvious degradation and precipitation were observed. The loss rate is less than 5% within the expiration date under appropriate storage condition.

[IDENTIFICATION]

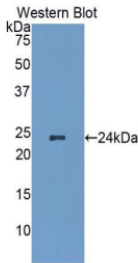
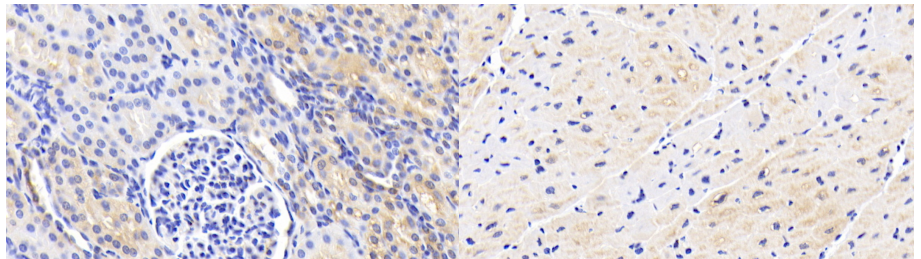
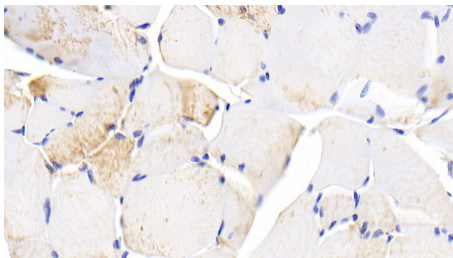


Figure. Western Blot; Sample: Recombinant Hsp27, Human.

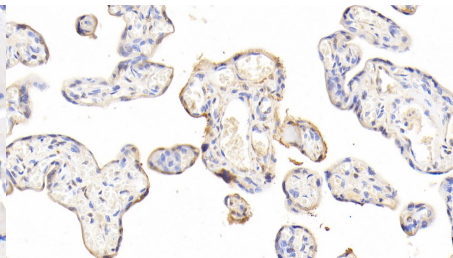


DAB staining on IHC-P; Samples: Human Kidney Tissue; Primary Ab: 20µg/ml Rabbit Anti-Human HSPB27 Antibody Second Ab: 2µg/mL HRP-Linked Caprine Anti-Rabbit IgG Polyclonal Antibody (Catalog: SAA544Rb19)

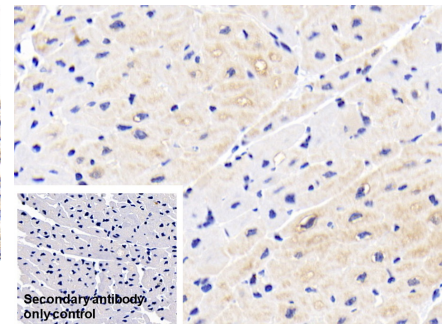
DAB staining on IHC-P; Samples: Human Cardiac Muscle Tissue; Primary Ab: 20µg/ml Rabbit Anti-Human Hsp27 Antibody Second Ab: 2µg/mL HRP-Linked Caprine Anti-Rabbit IgG Polyclonal Antibody (Catalog: SAA544Rb19)



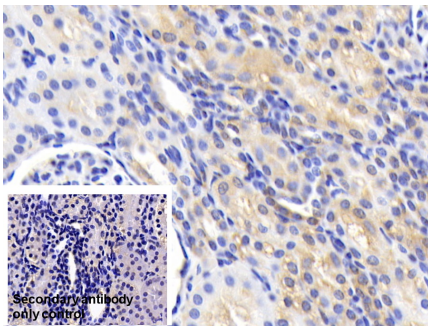
DAB staining on IHC-P; Samples: Human Skeletal muscle Tissue; Primary Ab: 20µg/ml Rabbit Anti-Human Hsp27 Antibody Second Ab: 2µg/mL HRP-Linked Caprine Anti-Rabbit IgG Polyclonal Antibody (Catalog: SAA544Rb19)



DAB staining on IHC-P; Samples: Human Placenta Tissue; Primary Ab: 20µg/ml Rabbit Anti-Human Hsp27 Antibody Second Ab: 2µg/mL HRP-Linked Caprine Anti-Rabbit IgG Polyclonal Antibody (Catalog: SAA544Rb19)



DAB staining on IHC-P; Sample: Human Cardiac Muscle Tissue Primary Ab: 20µg/ml Rabbit Anti-Human Hsp27 Antibody Control: Used PBS instead of primary antibody Second Ab: 2µg/ml HRP-Linked Caprine Anti-Rabbit IgG Polyclonal Antibody (Catalog: SAA544Rb19)



DAB staining on IHC-P;

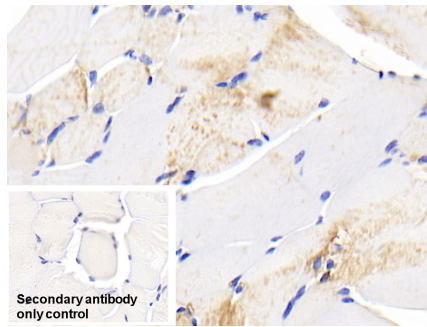
Sample: Human Kidney Tissue

Primary Ab: 20µg/ml Rabbit Anti-Human Hsp27 Antibody

Control: Used PBS instead of primary antibody

Second Ab: 2µg/ml HRP-Linked Caprine Anti-Rabbit IgG Polyclonal Antibody

(Catalog: SAA544Rb19)



DAB staining on IHC-P;

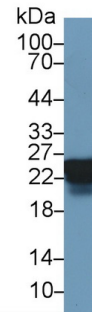
Sample: Human Skeletal muscle Tissue

Primary Ab: 20µg/ml Rabbit Anti-Human Hsp27 Antibody

Control: Used PBS instead of primary antibody

Second Ab: 2µg/ml HRP-Linked Caprine Anti-Rabbit IgG Polyclonal Antibody

(Catalog: SAA544Rb19)

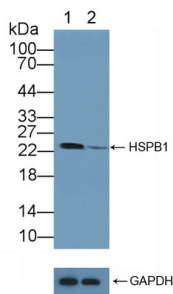


Western Blot; Sample: Human Lung lysate;

Primary Ab: 3µg/ml Rabbit Anti-Human Hsp27 Antibody

Second Ab: 0.2µg/mL HRP-Linked Caprine Anti-Rabbit IgG Polyclonal Antibody

(Catalog: SAA544Rb19)



Knockout Verification:

Lane 1: Wild-type HeLa cell lysate;

Lane 2: Hsp27 knockout HeLa cell lysate;

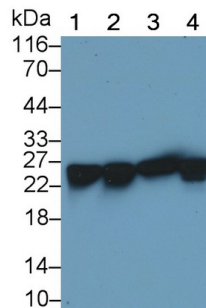
Predicted MW: 23kd

Observed MW: 23kd

Primary Ab: 3µg/ml Rabbit Anti-Human Hsp27 Antibody

Second Ab: 0.2µg/mL HRP-Linked Caprine Anti-Rabbit IgG Polyclonal

Antibody



Western Blot; Sample: Lane1: Porcine Heart lysate; Lane2: Porcine Skeletal

muscle lysate; Lane3: A549 cell lysate; Lane4: HepG2 cell lysate

Primary Ab: 0.1µg/ml Rabbit Anti-Human Hsp27 Antibody

Second Ab: 0.2µg/mL HRP-Linked Caprine Anti-Rabbit IgG Polyclonal

Antibody

(Catalog: SAA544Rb19)



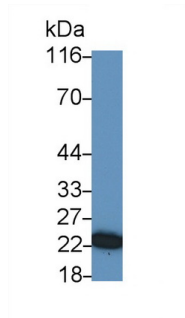
Western Blot; Sample: Porcine Heart lysate;

Primary Ab: 3µg/ml Rabbit Anti-Human Hsp27 Antibody

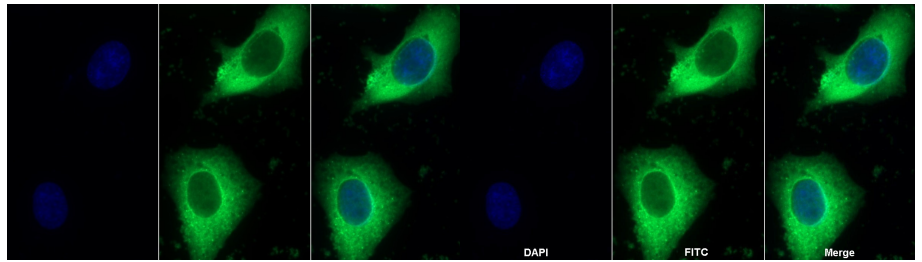
Second Ab: 0.2µg/mL HRP-Linked Caprine Anti-Rabbit IgG Polyclonal Antibody

(Catalog: SAA544Rb19)

(Catalog: SAA544Rb19)



Western Blot; Sample: Hela cell lysate
 Primary Ab: 0.1µg/ml Rabbit Anti-Human Hsp27 Antibody
 Second Ab: 0.2µg/mL HRP-Linked Caprine Anti-Rabbit IgG Polyclonal Antibody
 (Catalog: SAA544Rb19)



FITC staining on IF;
 Sample: Human HeLa cell;
 Primary Ab: 30µg/ml Rabbit Anti-Human Hsp27 Antibody
 Second Ab: 2µg/ml FITC-Linked Caprine Anti-Rabbit IgG Polyclonal Antibody
 (Catalog: SAA544Rb18)

FITC staining on IF; Sample: HeLa cell
 Primary Ab: 30µg/ml Rabbit Anti-Human Hsp27 Antibody
 Second Ab: 2µg/ml FITC-Linked Caprine Anti-Rabbit IgG Polyclonal Antibody (Catalog: SAA544Rb11)

[IMPORTANT NOTE]

The kit is designed for research use only, we will not be responsible for any issue if the kit was used in clinical diagnostic or any other procedures.