

PAA822Hu01

Polyclonal Antibody to Heat Shock Protein 60 (Hsp60)

Organism Species: *Homo sapiens (Human)*

Instruction manual

FOR RESEARCH USE ONLY

NOT FOR USE IN CLINICAL DIAGNOSTIC PROCEDURES

13th Edition (Revised in Aug, 2023)

[PROPERTIES]

Source: Polyclonal antibody preparation

Host: Rabbit

Purification: Antigen-specific affinity chromatography followed by Protein A affinity chromatography

Traits: Liquid

Concentration: 0.5mg/ml

UOM: 100µL

Cross Reactivity: Mouse; Rat; Canine; Porcine; Bovine; Gallus.

Applications: WB,IHC,ICC/IF

[IMMUNOGEN]

Immunogen: Recombinant Hsp60 (Met1~Phe573) expressed in *E.coli*

Accession No.: RPA822Hu01

[APPLICATIONS]

Western blotting: 0.01-2µg/mL;

Immunohistochemistry: 5-20µg/mL;

Immunofluorescence:5-20µg/mL;

Optimal working dilutions must be determined by end user.

[FORMULATION]

Form & Buffer: Supplied as solution form in 0.01M PBS, pH7.4, containing 0.05% Proclin-300, 50% glycerol.

[STORAGE AND STABILITY]

Storage: Avoid repeated freeze/thaw cycles.

Store at 4°C for frequent use.

Aliquot and store at -20°C for 24 months.

Stability Test: The thermal stability is described by the loss rate. The loss rate was determined by accelerated thermal degradation test, that is, incubate the protein at 37°C for 48h, and no

obvious degradation and precipitation were observed. The loss rate is less than 5% within the expiration date under appropriate storage condition.

[IDENTIFICATION]

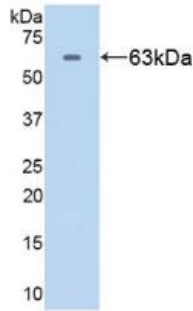
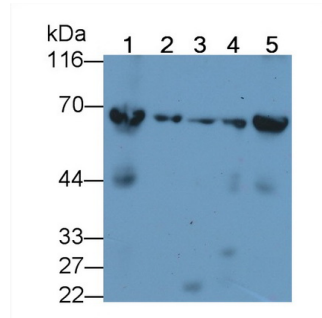
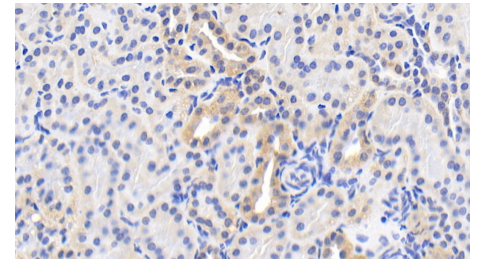


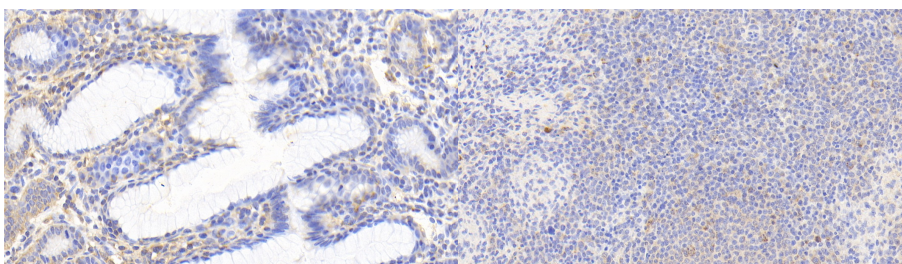
Figure. Western Blot; Sample: Recombinant HSPD1, Human.



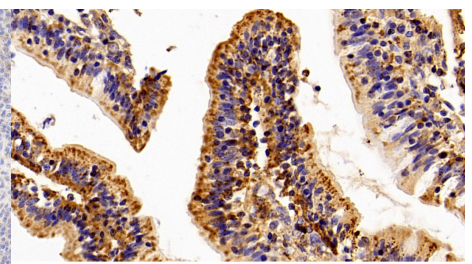
Western Blot; Sample: Lane1: Mouse Liver lysate; Lane2: Porcine Liver lysate; Lane3: Bovine Liver lysate; Lane4: Gallus Liver lysate; Lane5: Canine Liver lysate
 Primary Ab: 0.05µg/ml Rabbit Anti-Human Hsp60 Antibody
 Second Ab: 0.2µg/mL HRP-Linked Caprine Anti-Rabbit IgG Polyclonal Antibody
 (Catalog: SAA544Rb19)



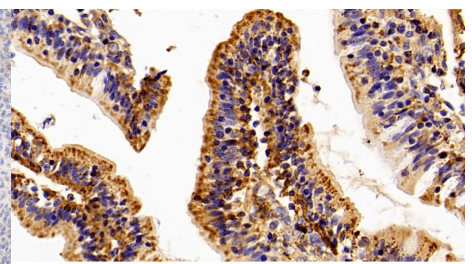
DAB staining on IHC-P;
 Samples: Human Kidney Tissue;
 Primary Ab: 20µg/ml Rabbit Anti-Human HSPD1 Antibody
 Second Ab: 2µg/mL HRP-Linked Caprine Anti-Rabbit IgG Polyclonal Antibody
 (Catalog: SAA544Rb19)



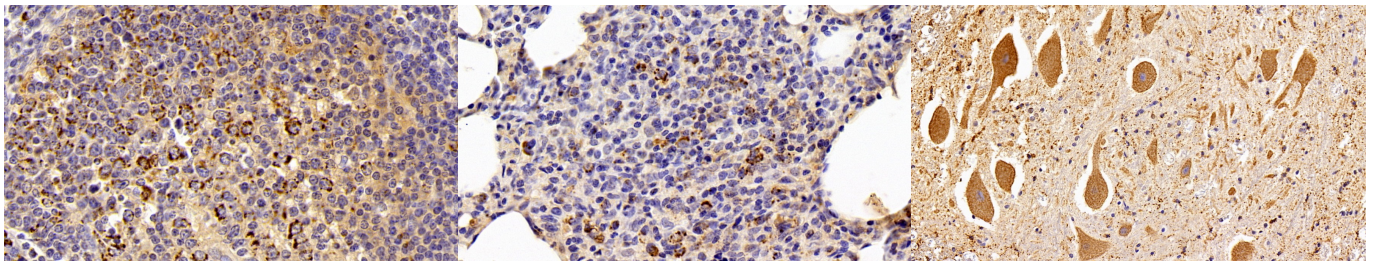
DAB staining on IHC-P;
 Samples: Human Stomach Tissue;
 Primary Ab: 20µg/ml Rabbit Anti-Human HSPD1 Antibody
 Second Ab: 2µg/mL HRP-Linked Caprine Anti-Rabbit IgG Polyclonal Antibody
 (Catalog: SAA544Rb19)



DAB staining on IHC-P;
 Samples: Human Spleen Tissue;
 Primary Ab: 20µg/ml Rabbit Anti-Human HSPD1 Antibody
 Second Ab: 2µg/mL HRP-Linked Caprine Anti-Rabbit IgG Polyclonal Antibody
 (Catalog: SAA544Rb19)



DAB staining on IHC-P;
 Sample: Human Small intestine Tissue;
 Primary Ab: 20µg/ml Rabbit Anti-Human Hsp60 Antibody
 Second Ab: 2µg/mL HRP-Linked Caprine Anti-Rabbit IgG Polyclonal Antibody
 (Catalog: SAA544Rb19)



DAB staining on IHC-P;

Sample: Human Lymph node Tissue;

Primary Ab: 20ug/ml Rabbit Anti-Human Hsp60 Antibody

Second Ab: 2µg/mL HRP-Linked Caprine Anti-Rabbit IgG Polyclonal Antibody

(Catalog: SAA544Rb19)

DAB staining on IHC-P;

Sample: Human Lung Tissue;

Primary Ab: 20ug/ml Rabbit Anti-Human Hsp60 Antibody

Second Ab: 2µg/mL HRP-Linked Caprine Anti-Rabbit IgG Polyclonal Antibody

(Catalog: SAA544Rb19)

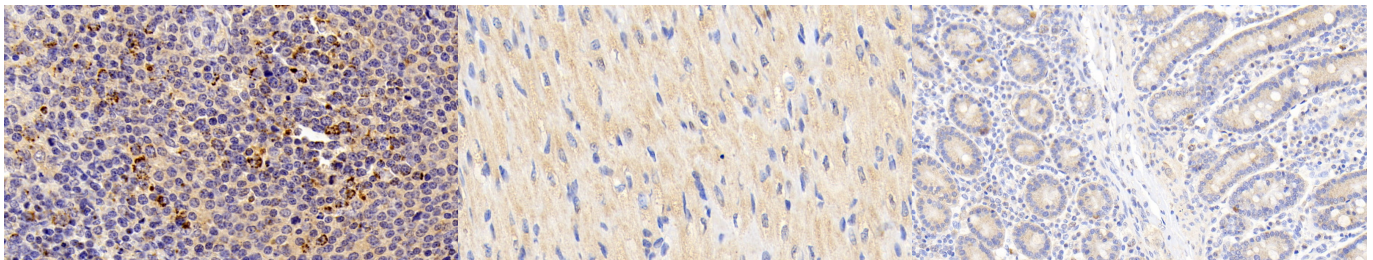
DAB staining on IHC-P;

Sample: Human Spinal cord Tissue;

Primary Ab: 20ug/ml Rabbit Anti-Human Hsp60 Antibody

Second Ab: 2µg/mL HRP-Linked Caprine Anti-Rabbit IgG Polyclonal Antibody

(Catalog: SAA544Rb19)



DAB staining on IHC-P;

Sample: Human Spleen Tissue;

Primary Ab: 20ug/ml Rabbit Anti-Human Hsp60 Antibody

Second Ab: 2µg/mL HRP-Linked Caprine Anti-Rabbit IgG Polyclonal Antibody

(Catalog: SAA544Rb19)

DAB staining on IHC-P;

Samples: Human Cardiac Muscle Tissue;

Primary Ab: 20µg/ml Rabbit Anti-Human HSPD1 Antibody

Second Ab: 2µg/mL HRP-Linked Caprine Anti-Rabbit IgG Polyclonal Antibody

(Catalog: SAA544Rb19)

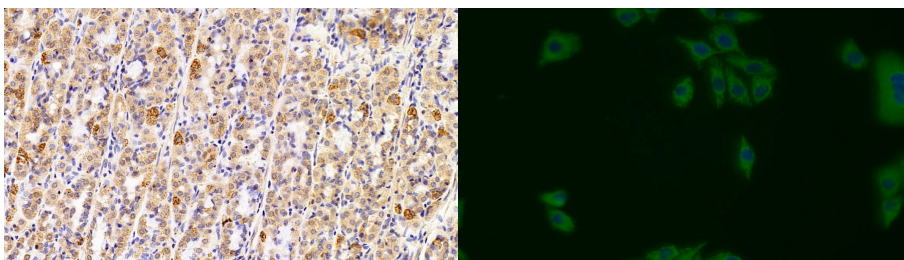
DAB staining on IHC-P;

Samples: Human Small intestine Tissue;

Primary Ab: 20µg/ml Rabbit Anti-Human HSPD1 Antibody

Second Ab: 2µg/mL HRP-Linked Caprine Anti-Rabbit IgG Polyclonal Antibody

(Catalog: SAA544Rb19)



DAB staining on IHC-P;

FITC staining on IF;

Sample: Human Stomach Tissue;

Primary Ab: 20ug/ml Rabbit Anti-
Human Hsp60 Antibody

Second Ab: 2µg/mL HRP-Linked
Caprine Anti-Rabbit IgG Polyclonal
Antibody

(Catalog: SAA544Rb19)

Samples: Human MCF7 cell;

Primary Ab: 20ug/ml Rabbit Anti-
Human HSPD1 Antibody

Second Ab: 1µg/ml FITC-Linked
Caprine Anti-Rabbit IgG Polyclonal
Antibody

(Catalog: SAA544Rb18)

[IMPORTANT NOTE]

The kit is designed for research use only, we will not be responsible for any issue if the kit was used in clinical diagnostic or any other procedures.