

**PAA399Ra01**

**Polyclonal Antibody to High Mobility Group Protein 1 (HMGB1)**

**Organism Species: *Rattus norvegicus* (Rat)**

***Instruction manual***

FOR RESEARCH USE ONLY

NOT FOR USE IN CLINICAL DIAGNOSTIC PROCEDURES

---

13th Edition (Revised in Aug, 2023)

## **[ PROPERTIES ]**

**Source:** Polyclonal antibody preparation

**Host:** Rabbit

**Purification:** Antigen-specific affinity chromatography followed by Protein A affinity chromatography

**Traits:** Liquid

**Concentration:** 0.5mg/mL

**UOM:** 100µL

**Cross Reactivity:** Human;Mouse

**Applications:** WB; IHC

## **[ IMMUNOGEN ]**

**Immunogen:** Recombinant HMGB1 (Met1~Glu215) expressed in *E.coli*

**Accession No.:** RPA399Ra01

## **[ APPLICATIONS ]**

Western blotting: 0.01-2µg/mL;

Immunohistochemistry: 5-20µg/mL;

Optimal working dilutions must be determined by end user.

## **[ FORMULATION ]**

**Form & Buffer:** Supplied as solution form in 0.01M PBS, pH7.4, containing 0.05% Proclin-300, 50% glycerol.

## **[ STORAGE AND STABILITY ]**

**Storage:** Avoid repeated freeze/thaw cycles.

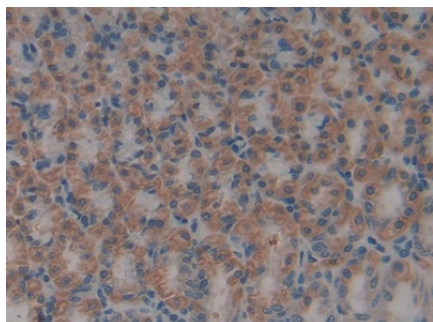
Store at 4°C for frequent use.

Aliquot and store at -20°C for 24 months.

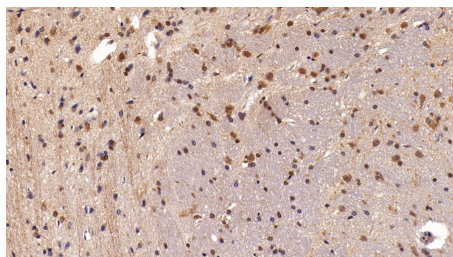
**Stability Test:** The thermal stability is described by the loss rate. The loss rate was determined by accelerated thermal degradation test, that is, incubate the protein at 37°C for 48h, and no obvious degradation and precipitation were observed. The loss rate is less than 5% within the

expiration date under appropriate storage condition.

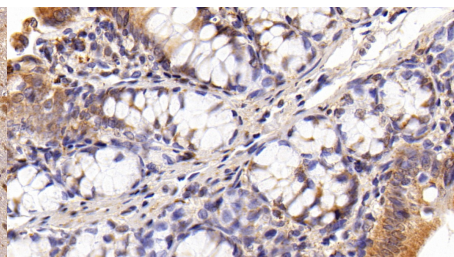
## [ IDENTIFICATION ]



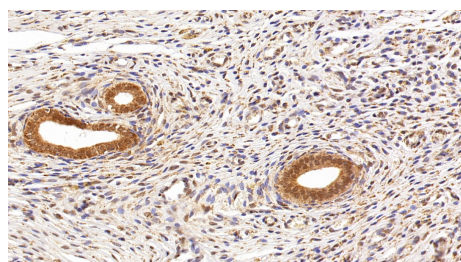
DAB staining on IHC-P; Samples: Rat Stomach Tissue; Primary Ab: 10 $\mu$ g/ml Rabbit Anti-Rat HMGB1 Antibody  
Second Ab: 2 $\mu$ g/mL HRP-Linked Caprine Anti-Rabbit IgG Polyclonal Antibody (Catalog: SAA544Rb19)



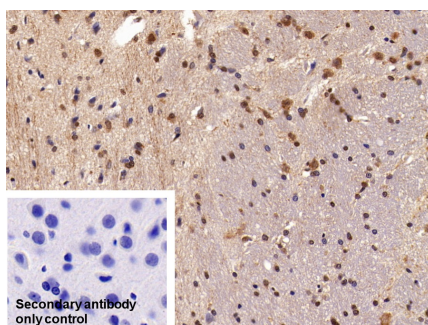
DAB staining on IHC-P;  
Sample: Rat Cerebrum Tissue;  
Primary Ab: 20 $\mu$ g/ml Rabbit Anti-Rat HMGB1 Antibody  
Second Ab: 2 $\mu$ g/mL HRP-Linked Caprine Anti-Rabbit IgG Polyclonal Antibody  
(Catalog: SAA544Rb19)



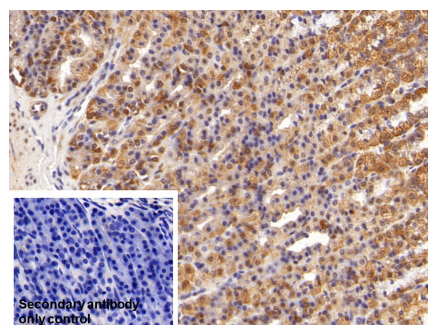
DAB staining on IHC-P;  
Sample: Rat Colon Tissue;  
Primary Ab: 20 $\mu$ g/ml Rabbit Anti-Rat HMGB1 Antibody  
Second Ab: 2 $\mu$ g/mL HRP-Linked Caprine Anti-Rabbit IgG Polyclonal Antibody  
(Catalog: SAA544Rb19)



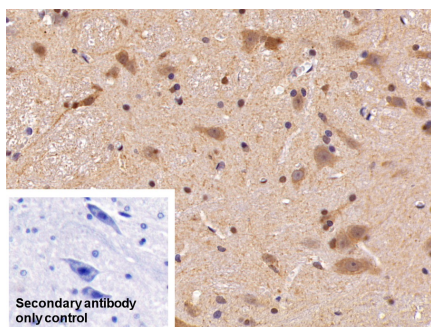
DAB staining on IHC-P;  
Sample: Rat Uterus Tissue;  
Primary Ab: 20 $\mu$ g/ml Rabbit Anti-Rat HMGB1 Antibody  
Second Ab: 2 $\mu$ g/mL HRP-Linked Caprine Anti-Rabbit IgG Polyclonal Antibody  
(Catalog: SAA544Rb19)



DAB staining on IHC-P;  
Sample: Rat Cerebrum Tissue  
Primary Ab: 20 $\mu$ g/ml Rabbit Anti-Rat HMGB1 Antibody  
Control: Used PBS instead of primary antibody  
Second Ab: 2 $\mu$ g/ml HRP-Linked Caprine Anti-Rabbit IgG Polyclonal Antibody  
(Catalog: SAA544Rb19)



DAB staining on IHC-P;  
Sample: Rat Stomach Tissue  
Primary Ab: 20 $\mu$ g/ml Rabbit Anti-Rat HMGB1 Antibody  
Control: Used PBS instead of primary antibody  
Second Ab: 2 $\mu$ g/ml HRP-Linked Caprine Anti-Rabbit IgG Polyclonal Antibody  
(Catalog: SAA544Rb19)



DAB staining on IHC-P;

Sample: Rat Spinal cord Tissue

Primary Ab: 20µg/ml Rabbit Anti-Rat

HMGB1 Antibody

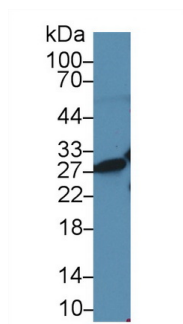
Control: Used PBS instead of primary antibody

Second Ab: 2µg/ml HRP-Linked

Caprine Anti-Rabbit IgG Polyclonal

Antibody

(Catalog: SAA544Rb19)



Western Blot; Sample: Human Jurkat

cell lysate;

Primary Ab: 2µg/ml Rabbit Anti-Rat

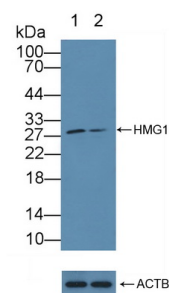
HMGB1 Antibody

Second Ab: 0.2µg/mL HRP-Linked

Caprine Anti-Rabbit IgG Polyclonal

Antibody

(Catalog: SAA544Rb19)



Knockout Varification:

Lane 1: Wild-type Jurkat cell lysate;

Lane 2: HMGB1 knockout Jurkat cell lysate;

Predicted MW: 25kd

Observed MW: 28kd

Primary Ab: 2µg/ml Rabbit Anti-Rat

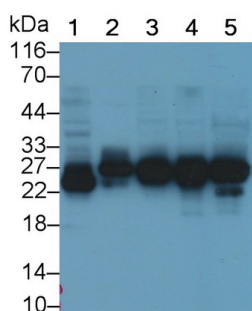
HMGB1 Antibody

Second Ab: 0.2µg/mL HRP-Linked

Caprine Anti-Rabbit IgG Polyclonal

Antibody

(Catalog: SAA544Rb19)



Western Blot; Sample: Lane1: Rat Lung lysate; Lane2: Rat Cerebrum lysate;

Lane3: Hela cell lysate; Lane4: HepG2

cell lysate; Lane5: A431 cell lysate

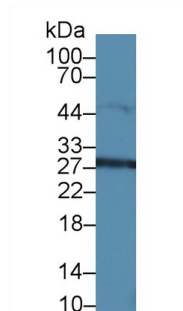
Primary Ab: 0.1µg/ml Rabbit Anti-Rat

HMGB1 Antibody

Second Ab: 0.2µg/mL HRP-Linked

Caprine Anti-Rabbit IgG Polyclonal

Antibody



Primary Ab: 2µg/ml Rabbit Anti-Rat

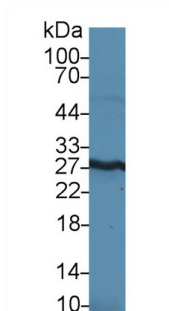
HMGB1 Antibody

Second Ab: 0.2µg/mL HRP-Linked

Caprine Anti-Rabbit IgG Polyclonal

Antibody

(Catalog: SAA544Rb19)



Western Blot; Sample: Mouse Kidney

lysate;

Primary Ab: 2µg/ml Rabbit Anti-Rat

HMGB1 Antibody

Second Ab: 0.2µg/mL HRP-Linked

Caprine Anti-Rabbit IgG Polyclonal

Antibody

(Catalog: SAA544Rb19)

(Catalog: SAA544Rb19)

**[ IMPORTANT NOTE ]**

The kit is designed for research use only, we will not be responsible for any issue if the kit was used in clinical diagnostic or any other procedures.