

PAQ849Hu01

Polyclonal Antibody to Histone Cluster 2, H3a (HIST2H3A)

Organism Species: *Homo sapiens (Human)*

Instruction manual

FOR RESEARCH USE ONLY

NOT FOR USE IN CLINICAL DIAGNOSTIC PROCEDURES

13th Edition (Revised in Aug, 2023)

[PROPERTIES]

Source: Polyclonal antibody preparation

Host: Rabbit

Purification: Antigen-specific affinity chromatography followed by Protein A affinity chromatography

Traits: Liquid

Concentration: 0.5mg/ml

UOM: 100µl

Cross Reactivity: Rat.

Applications: WB,IHC

[IMMUNOGEN]

Immunogen: Recombinant HIST2H3A (Met1~Ala136 (Accession # Q71DI3)) expressed in *E.coli*

Accession No.: RPQ849Hu01

[APPLICATIONS]

Western blotting: 0.01-2µg/mL;

Immunohistochemistry: 5-20µg/mL;

Optimal working dilutions must be determined by end user.

[FORMULATION]

Form & Buffer: Supplied as solution form in 0.01M PBS, pH7.4, containing 0.05% Proclin-300, 50% glycerol.

[STORAGE AND STABILITY]

Storage: Avoid repeated freeze/thaw cycles.

Store at 4°C for frequent use.

Aliquot and store at -20°C for 24 months.

Stability Test: The thermal stability is described by the loss rate. The loss rate was determined by accelerated thermal degradation test, that is, incubate the protein at 37°C for 48h, and no

obvious degradation and precipitation were observed. The loss rate is less than 5% within the expiration date under appropriate storage condition.

[IDENTIFICATION]

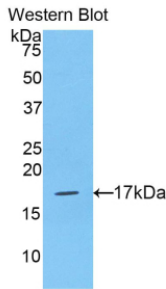
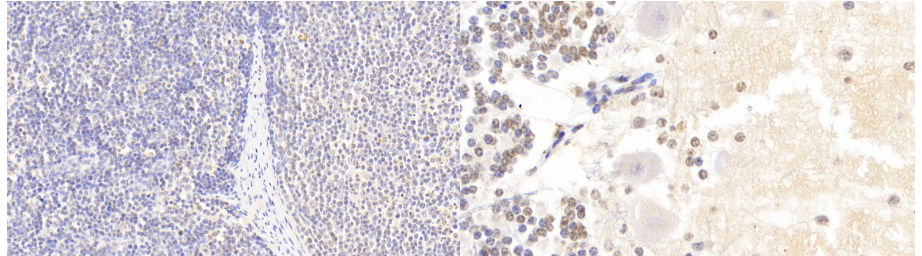
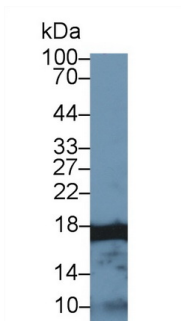


Figure. Western Blot; Sample: Recombinant HIST2H3A, Human.

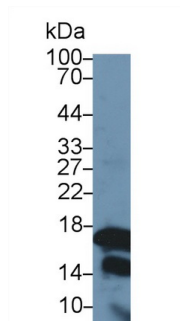


DAB staining on IHC-P; Samples: Human Lymph node Tissue; Primary Ab: 20µg/ml Rabbit Anti-Human HIST2H3A Antibody Second Ab: 2µg/mL HRP-Linked Caprine Anti-Rabbit IgG Polyclonal Antibody (Catalog: SAA544Rb19)

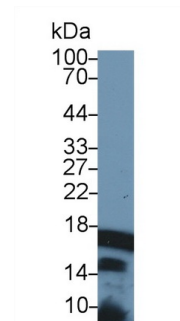
DAB staining on IHC-P; Samples: Human Cerebellum Tissue; Primary Ab: 20µg/ml Rabbit Anti-Human HIST2H3A Antibody Second Ab: 2µg/mL HRP-Linked Caprine Anti-Rabbit IgG Polyclonal Antibody (Catalog: SAA544Rb19)



Western Blot; Sample: Human U2OS cell lysate;



Western Blot; Sample: Human Liver lysate;

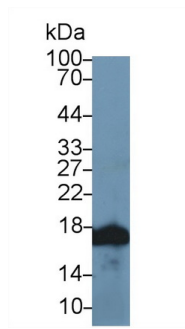
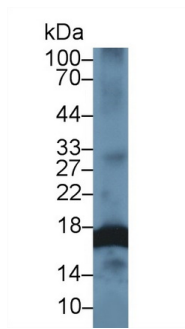


Western Blot; Sample: Human HeLa cell lysate;

Primary Ab: 1µg/ml Rabbit Anti-Human HIST2H3A Antibody
Second Ab: 0.2µg/mL HRP-Linked Caprine Anti-Rabbit IgG Polyclonal Antibody (Catalog: SAA544Rb19)

Primary Ab: 1µg/ml Rabbit Anti-Human HIST2H3A Antibody
Second Ab: 0.2µg/mL HRP-Linked Caprine Anti-Rabbit IgG Polyclonal Antibody (Catalog: SAA544Rb19)

Primary Ab: 1µg/ml Rabbit Anti-Human HIST2H3A Antibody
Second Ab: 0.2µg/mL HRP-Linked Caprine Anti-Rabbit IgG Polyclonal Antibody (Catalog: SAA544Rb19)



Western Blot; Sample: Rat Spleen lysate;

Western Blot; Sample: Rat Heart lysate;

Primary Ab: 1µg/ml Rabbit Anti-Human HIST2H3A Antibody

Primary Ab: 1µg/ml Rabbit Anti-Human HIST2H3A Antibody

Second Ab: 0.2µg/mL HRP-Linked

Second Ab: 0.2µg/mL HRP-Linked

Caprine Anti-Rabbit IgG Polyclonal Antibody

Caprine Anti-Rabbit IgG Polyclonal Antibody

(Catalog: SAA544Rb19)

(Catalog: SAA544Rb19)

[IMPORTANT NOTE]

The kit is designed for research use only, we will not be responsible for any issue if the kit was used in clinical diagnostic or any other procedures.