

PAA285Mi01

Polyclonal Antibody to Histone H3 (H3)

Organism Species: *Homo sapiens* (Human), *Mus musculus* (Mouse), *Rattus norvegicus* (Rat), *Oryctolagus cuniculus* (Rabbit), *Rhesus monkey* (Simian), *Canis familiaris*; Canine (Dog), *Bos taurus*; Bovine (Cattle), *Equus caballus*; Equine (Horse), *Chicken* (*Gallus*)

Instruction manual

FOR RESEARCH USE ONLY

NOT FOR USE IN CLINICAL DIAGNOSTIC PROCEDURES

13th Edition (Revised in Aug, 2023)

[PROPERTIES]

Source: Polyclonal antibody preparation

Host: Rabbit

Purification: Antigen-specific affinity chromatography followed by Protein A affinity chromatography

Traits: Liquid

Concentration: 0.5mg/mL

UOM: 10 μ L

Cross Reactivity: Human; Mouse; Rat; Cavia; Simian; Canine; Porcine; Bovine; Ovine; Equine; Gallus

Applications: WB; IHC; ICC/IF

[IMMUNOGEN]

Immunogen: Recombinant Histone H3 (Met1~Ala136) expressed in *E.coli*

Accession No.: RPA285Mi01

[APPLICATIONS]

Western blotting: 0.01-2 μ g/mL;

Immunohistochemistry: 5-20 μ g/mL;

Immunocytochemistry: 5-20 μ g/mL;

Optimal working dilutions must be determined by end user.

[FORMULATION]

Form & Buffer: Supplied as solution form in 0.01M PBS, pH7.4, containing 0.05% Proclin-300, 50% glycerol.

[STORAGE AND STABILITY]

Storage: Avoid repeated freeze/thaw cycles.

Store at 4°C for frequent use.

Aliquot and store at -20°C for 24 months.

Stability Test: The thermal stability is described by the loss rate. The loss rate was determined

by accelerated thermal degradation test, that is, incubate the protein at 37°C for 48h, and no obvious degradation and precipitation were observed. The loss rate is less than 5% within the expiration date under appropriate storage condition.

[IDENTIFICATION]

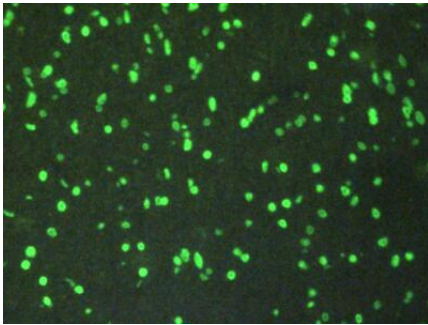
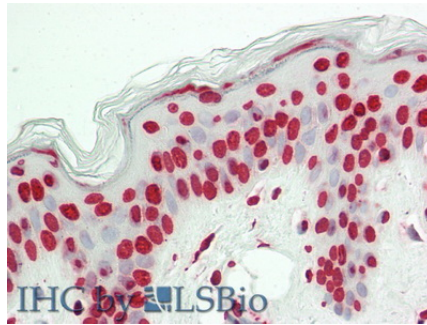
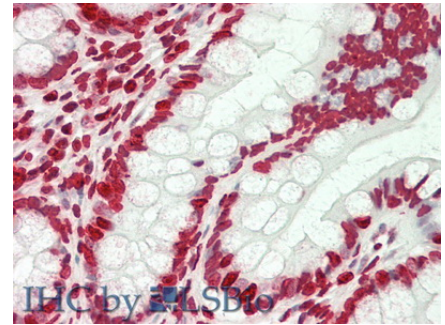


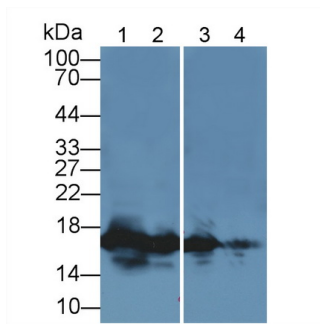
Figure: FITC staining on IHC-P;
Sample: Rat Brain Tissue.



Vector Red staining on IHC-P;
Samples: Human Skin Tissue;
Primary Ab: 10µg/ml Rabbit Anti-Human H3 Antibody
Second Ab: 2µg/mL HRP-Linked Caprine Anti-Rabbit IgG Polyclonal Antibody



Vector Red staining on IHC-P;
Samples: Human Small Intestine Tissue;
Primary Ab: 10µg/ml Rabbit Anti-Human H3 Antibody
Second Ab: 2µg/mL HRP-Linked Caprine Anti-Rabbit IgG Polyclonal Antibody



Western Blot; Sample: Lane1: Human Lung lysate; Lane2: Human Placenta lysate; Lane3: Rat Liver lysate; Lane4: Rat Cerebrum lysate
Primary Ab: 1µg/ml Rabbit Anti-Multi-species H3 Antibody
Second Ab: 0.2µg/mL HRP-Linked Caprine Anti-Rabbit IgG Polyclonal

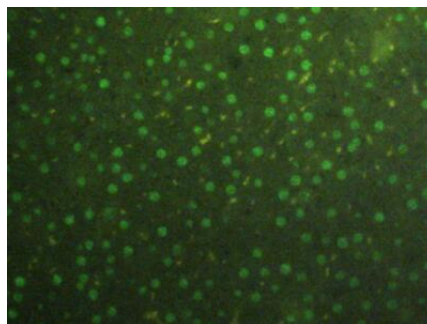


Figure: FITC staining on IHC-P;
Sample: Rat Liver Tissue.

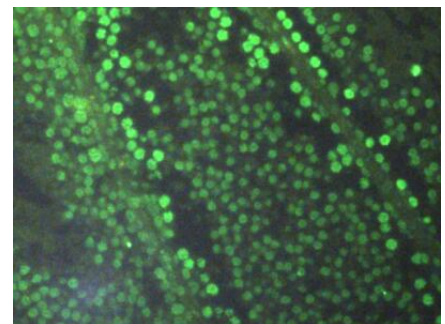


Figure: FITC staining on IHC-P;
Sample: Rat Testis Tissue.

Antibody

(Catalog: SAA544Rb19)

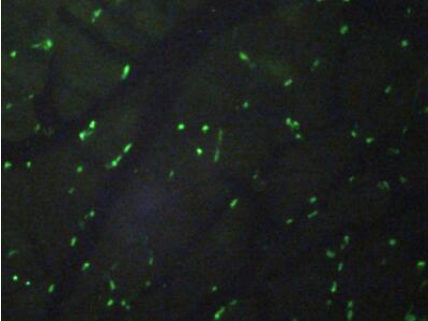


Figure: FITC staining on IHC-P;
Sample: Rat Skeletal Muscle Tissue.

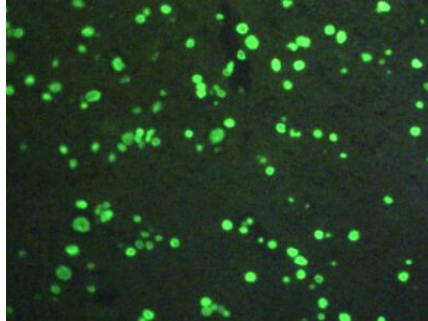


Figure: FITC staining on IHC-P;
Sample: Rat Spinal Cord Tissue.

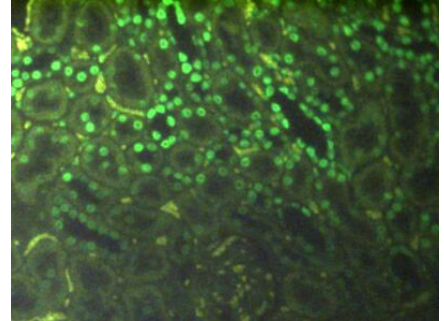


Figure: FITC staining on IHC-P;
Sample: Rat Kidney Tissue.

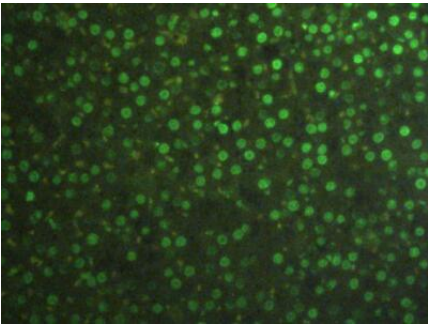


Figure: FITC staining on IHC-P;
Sample: Rat Adrenal Tissue.

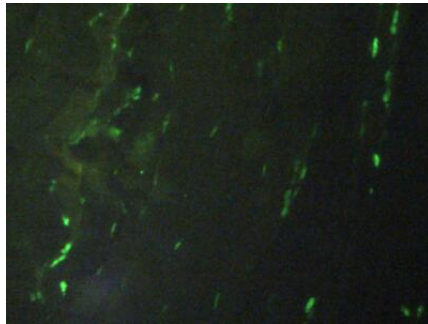


Figure: FITC staining on IHC-P;
Sample: Rat Placenta Tissue.

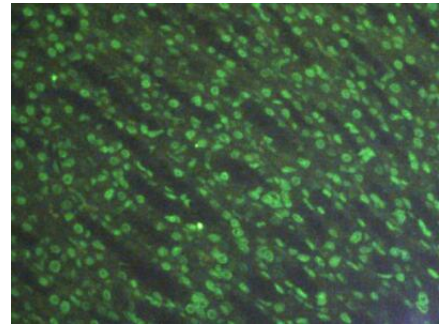


Figure: FITC staining on IHC-P;
Sample: Rat Stomach Tissue.

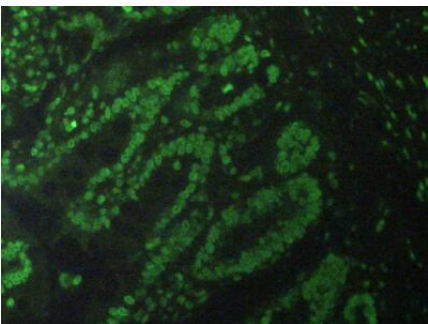


Figure: FITC staining on IHC-P;
Sample: Rat Small Intestine Tissue.

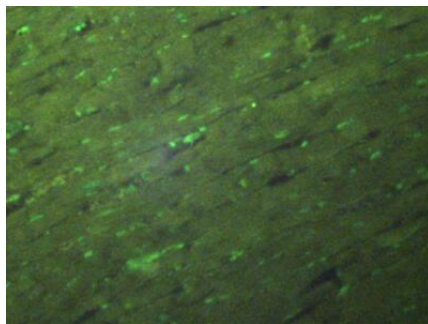


Figure: FITC staining on IHC-P;
Sample: Rat Heart Tissue.

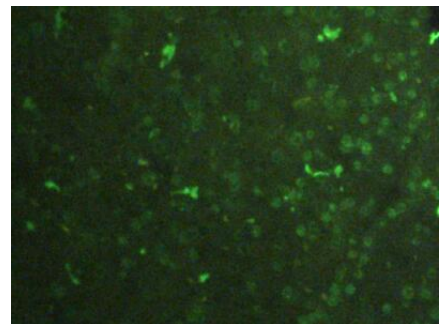


Figure: FITC staining on IHC-P;
Sample: Rat Pancreas Tissue.

[IMPORTANT NOTE]

The kit is designed for research use only, we will not be responsible for any issue if the kit was used in clinical diagnostic or any other procedures.