

PAG364Mu01

Polyclonal Antibody to Hydroxyacid Oxidase 1 (HAO1)

Organism Species: *Mus musculus* (Mouse)

Instruction manual

FOR RESEARCH USE ONLY

NOT FOR USE IN CLINICAL DIAGNOSTIC PROCEDURES

13th Edition (Revised in Aug, 2023)

[PROPERTIES]

Source: Polyclonal antibody preparation

Host: Rabbit

Purification: Antigen-specific affinity chromatography followed by Protein A affinity chromatography

Traits: Liquid

Concentration: 0.5mg/ml

UOM: 100µl

Cross Reactivity: Human; Rat; Porcine.

Applications: WB,IHC

[IMMUNOGEN]

Immunogen: Recombinant HAO1 (Ser113~Lys369) expressed in *E.coli*

Accession No.: RPG364Mu01

[APPLICATIONS]

Western blotting: 0.01-2µg/mL;

Immunohistochemistry: 5-20µg/mL;

Optimal working dilutions must be determined by end user.

[FORMULATION]

Form & Buffer: Supplied as solution form in 0.01M PBS, pH7.4, containing 0.05% Proclin-300, 50% glycerol.

[STORAGE AND STABILITY]

Storage: Avoid repeated freeze/thaw cycles.

Store at 4°C for frequent use.

Aliquot and store at -20°C for 24 months.

Stability Test: The thermal stability is described by the loss rate. The loss rate was determined by accelerated thermal degradation test, that is, incubate the protein at 37°C for 48h, and no obvious degradation and precipitation were observed. The loss rate is less than 5% within the

expiration date under appropriate storage condition.

[IDENTIFICATION]

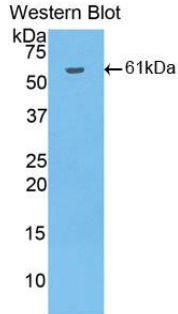
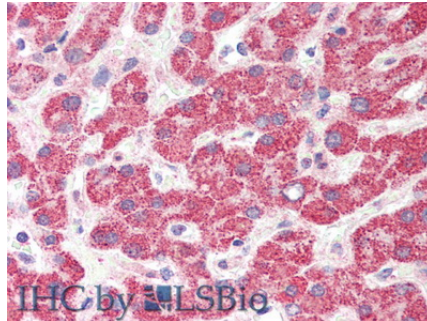
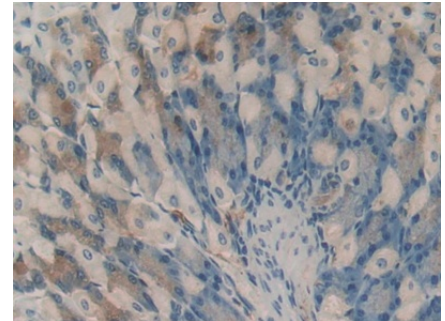


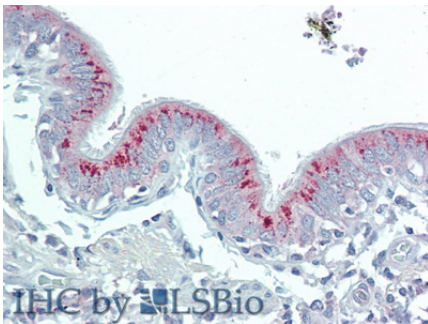
Figure. Western Blot; Sample: Recombinant HAO1, Mouse.



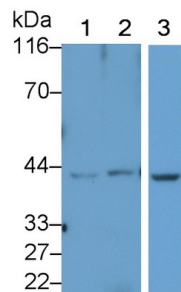
Vector Red staining on IHC-P;
Samples: Human Liver Tissue; Primary
Ab: 20µg/ml Rabbit Anti-Human HAO1
Antibody Second Ab: 2µg/mL HRP-
Linked Caprine Anti-Rabbit IgG
Polyclonal Antibody



DAB staining on IHC-P;
Samples: Mouse Stomach Tissue;
Primary Ab: 20µg/ml Rabbit Anti-Mouse
HAO1 Antibody
Second Ab: 2µg/mL HRP-Linked
Caprine Anti-Rabbit IgG Polyclonal
Antibody
(Catalog: SAA544Rb19)



Vector Red staining on IHC-P;
Samples: Human Lung Tissue;
Primary Ab: 20µg/ml Rabbit Anti-
Human HAO1 Antibody
Second Ab: 2µg/mL HRP-Linked
Caprine Anti-Rabbit IgG Polyclonal
Antibody



Western Blot; Sample: Lane1: Rat Liver
lysate; Lane2: Mouse Liver lysate;
Lane3: Porcine Liver lysate
Primary Ab: 0.2µg/ml Rabbit Anti-
Mouse HAO1 Antibody
Second Ab: 0.2µg/mL HRP-Linked
Caprine Anti-Rabbit IgG Polyclonal
Antibody
(Catalog: SAA544Rb19) Selected

[IMPORTANT NOTE]

The kit is designed for research use only, we will not be responsible for any issue if the kit was used in clinical diagnostic or any other procedures.