

PAA056Eq01

Polyclonal Antibody to Interleukin 10 (IL10)

Organism Species: Equus caballus; Equine (Horse)

Instruction manual

FOR IN VITRO USE AND RESEARCH USE ONLY
NOT FOR USE IN CLINICAL DIAGNOSTIC PROCEDURES

[**PRODUCT INFORMATION**]

Immunogen: IL10, Equine

Clonality: Polyclonal

Host: Rabbit

Immunoglobulin Type: IgG

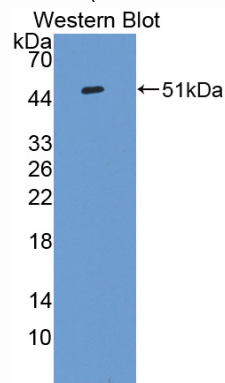
Purification: Affinity Chromatography.

Applications: WB, ICC, IHC-P, IHC-F, ELISA

Concentration: 200µg/mL

UOM: 100µg

9th Edition (Revised in Jul, 2013)



Sample: Recombinant IL10, Equine

[**IMMUNOGEN INFORMATION**]

Immunogen: Recombinant IL10 (Ser19~Asn178) expressed in *E.coli*.

Accession No.: RPA056Eq01

Sequence: The target protein is fused with two N-terminal Tags, His-tag and GST-tag and its sequence is listed below.

MSPILGYWKI KGLVQPTRL L LEYLEEKYEE HLYERDEGDK WRNKKFELGL EFPNLPYYID
GDVKLTQSMA IIRYIADKHN MLGGCPKERA EISMLEGAVL DIRYGVSR IA YSKDFETLKV
DFLSKLP EML KMFEDRLCHK TYLNGDHVTH PDFMLYDALD VVLYMDPMCL DAFP KLVCFK
KRIEAI PQID KYLKSSKYIA WPLQGWQATF GGGDHPPKSD GSTSGSGHHH HHSAGLVPR
GSTAIGMKET AAKFERQHM DSPDLGTGGG SGIEGRGSMG YRGSEF-SR DRGTQSENSC
THFPTSLPHM LHELRAAFSR VKTFFQMKDQ LDNMLLNGSL LEDFKGYLGC QALSEMIQFY
LEEVMQAEN HGPDIKEHVN SLGEKLTCLR VLR RCHRFL PCENKSKAVE QVKS AFSK LQ
EKG VYKAMSE FDI FINYIEA YMTTKMKN

[ANTIBODY SPECIFICITY]

The antibody is a rabbit polyclonal antibody raised against IL10. It has been selected for its ability to recognize IL10 in immunohistochemical staining and western blotting.

[APPLICATIONS]

Western blotting: 1:100-400

Immunocytochemistry in formalin fixed cells: 1:100-500

Immunohistochemistry in formalin fixed frozen section: 1:100-500

Immunohistochemistry in paraffin section: 1:50-200

Enzyme-linked Immunosorbent Assay: 1:100-200

Optimal working dilutions must be determined by end user.

[CONTENTS]

Form & Buffer: Supplied as solution form in PBS, pH7.4, containing 0.02% NaN₃, 50% glycerol.

[QUALITY CONTROL]

Content: The quality control contains recombinant IL10 (Ser19~Asn178) disposed in loading buffer.

Usage: 10uL per well when 3,3'-Diaminobenzidine(DAB) as the substrate.
5uL per well when used in enhanced chemiluminescent (ECL).

Note: The quality control is specifically manufactured as the positive control. Not used for other purposes.

Loading Buffer: 100mM Tris(pH8.8), 2% SDS, 200mM NaCl, 50% glycerol, BPB 0.01%, NaN₃ 0.02%.

[STORAGE]

Store at 4°C for frequent use. Stored at -20°C to -80°C in a manual defrost freezer for one year without detectable loss of activity. Avoid repeated freeze-thaw cycles.