

**PAH838Hu01**

**Polyclonal Antibody to Isocitrate Dehydrogenase 2, mitochondrial (IDH2)**

**Organism Species: *Homo sapiens (Human)***

***Instruction manual***

FOR RESEARCH USE ONLY

NOT FOR USE IN CLINICAL DIAGNOSTIC PROCEDURES

---

13th Edition (Revised in Aug, 2023)

## **[ PROPERTIES ]**

**Source:** Polyclonal antibody preparation

**Host:** Rabbit

**Purification:** Antigen-specific affinity chromatography followed by Protein A affinity chromatography

**Traits:** Liquid

**Concentration:** 0.5mg/mL

**UOM:** 100µL

**Cross Reactivity:** Porcine

**Applications:** WB; IHC

## **[ IMMUNOGEN ]**

**Immunogen:** Recombinant IDH2 (Ala40~Gln452) expressed in *E.coli*

**Accession No.:** RPH838Hu01

## **[ APPLICATIONS ]**

Western blotting: 0.01-2µg/mL

Immunohistochemistry: 5-20µg/mL

Optimal working dilutions must be determined by end user.

## **[ FORMULATION ]**

**Form & Buffer:** Supplied as solution form in 0.01M PBS, pH7.4, containing 0.05% Proclin-300, 50% glycerol.

## **[ STORAGE AND STABILITY ]**

**Storage:** Avoid repeated freeze/thaw cycles.

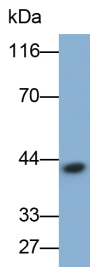
Store at 4°C for frequent use.

Aliquot and store at -20°C for 24 months.

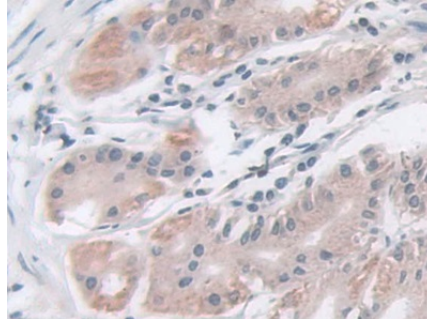
**Stability Test:** The thermal stability is described by the loss rate. The loss rate was determined by accelerated thermal degradation test, that is, incubate the protein at 37°C for 48h, and no obvious degradation and precipitation were observed. The loss rate is less than 5% within the

expiration date under appropriate storage condition.

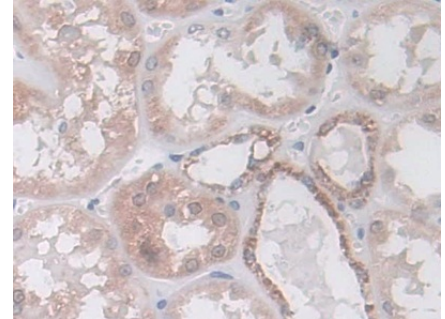
**[ IDENTIFICATION ]**



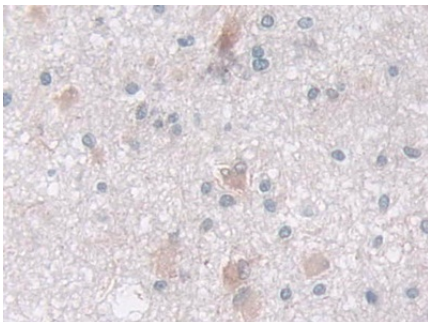
Western Blot; Sample: Porcine Heart lysate Primary Ab: 0.2µg/ml Rabbit Anti-Human IDH2 Antibody Second Ab: 0.2?g/ml HRP-Linked Caprine Anti-Rabbit IgG Polyclonal Antibody (Catalog: SAA544Rb19)



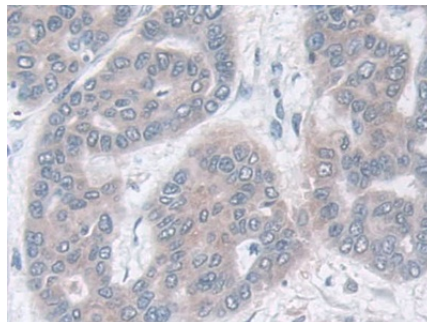
DAB staining on IHC-P; Samples: Human Stomach Tissue; Primary Ab: 10µg/ml Rabbit Anti-Human IDH2 Antibody Second Ab: 2µg/mL HRP-Linked Caprine Anti-Rabbit IgG Polyclonal Antibody (Catalog: SAA544Rb19)



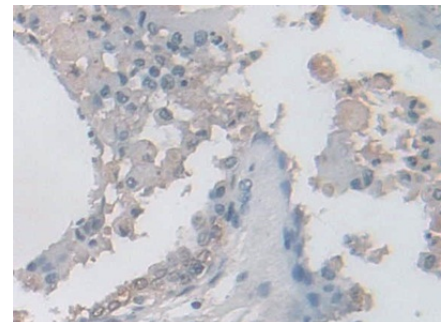
DAB staining on IHC-P; Samples: Human Kidney Tissue; Primary Ab: 10µg/ml Rabbit Anti-Human IDH2 Antibody Second Ab: 2µg/mL HRP-Linked Caprine Anti-Rabbit IgG Polyclonal Antibody (Catalog: SAA544Rb19)



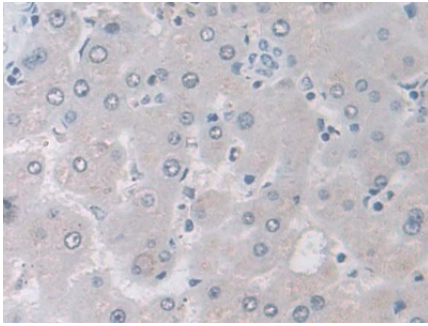
DAB staining on IHC-P; Samples: Human Glioma Tissue; Primary Ab: 10µg/ml Rabbit Anti-Human IDH2 Antibody Second Ab: 2µg/mL HRP-Linked Caprine Anti-Rabbit IgG Polyclonal Antibody (Catalog: SAA544Rb19)



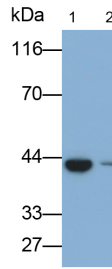
DAB staining on IHC-P; Samples: Human Liver cancer Tissue; Primary Ab: 10µg/ml Rabbit Anti-Human IDH2 Antibody Second Ab: 2µg/mL HRP-Linked Caprine Anti-Rabbit IgG Polyclonal Antibody (Catalog: SAA544Rb19)



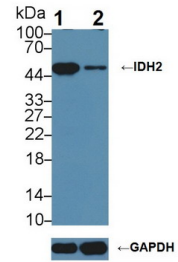
DAB staining on IHC-P; Samples: Human Prostate Tissue; Primary Ab: 10µg/ml Rabbit Anti-Human IDH2 Antibody Second Ab: 2µg/mL HRP-Linked Caprine Anti-Rabbit IgG Polyclonal Antibody (Catalog: SAA544Rb19)



DAB staining on IHC-P;  
 Samples: Human Liver Tissue;  
 Primary Ab: 10µg/ml Rabbit Anti-Human IDH2 Antibody  
 Second Ab: 2µg/mL HRP-Linked Caprine Anti-Rabbit IgG Polyclonal Antibody  
 (Catalog: SAA544Rb19)



Western Blot; Samples: Lane1: Jurkat cell lysate; Lane2: A549 cell lysate;  
 Primary Ab: 0.2µg/ml Rabbit Anti-Human IDH2 Antibody  
 Second Ab: 0.2µg/ml HRP-Linked Caprine Anti-Rabbit IgG Polyclonal Antibody  
 (Catalog: SAA544Rb19)



Knockout Verification:  
 Lane 1: Wild-type Jurkat cell lysate;  
 Lane 2: IDH2 knockout Jurkat cell lysate;  
 Predicted MW: 51,45kDa  
 Observed MW: 45kDa  
 Primary Ab: 1µg/ml Rabbit Anti-Human IDH2 Antibody  
 Second Ab: 0.2µg/mL HRP-Linked Caprine Anti-Rabbit IgG Polyclonal Antibody  
 (Catalog: SAA544Rb19)

**[ IMPORTANT NOTE ]**

The kit is designed for research use only, we will not be responsible for any issue if the kit was used in clinical diagnostic or any other procedures.