

PAL648Hu01

Polyclonal Antibody to Kelch Like ECH Associated Protein 1 (KEAP1)

Organism Species: *Homo sapiens (Human)*

Instruction manual

FOR RESEARCH USE ONLY

NOT FOR USE IN CLINICAL DIAGNOSTIC PROCEDURES

13th Edition (Revised in Aug, 2023)

[**PROPERTIES**]

Source: Polyclonal antibody preparation

Host: Rabbit

Purification: Antigen-specific affinity chromatography followed by Protein A affinity chromatography

Traits: Liquid

Concentration: 0.5mg/mL

UOM: 10 μ L

Cross Reactivity: Mouse;Rat

Applications: WB; IHC; ICC/IF

[**IMMUNOGEN**]

Immunogen: Recombinant KEAP1 (Leu327~Cys624) expressed in *E.coli*

Accession No.: RPL648Hu01

[**APPLICATIONS**]

Western blotting: 0.01-2 μ g/mL;

Immunohistochemistry: 5-20 μ g/mL;

Immunocytochemistry: 5-20 μ g/mL;

Optimal working dilutions must be determined by end user.

[**FORMULATION**]

Form & Buffer: Supplied as solution form in PBS, pH7.4, containing 0.02% NaN₃, 50% glycerol.

[**STORAGE AND STABILITY**]

Storage: Avoid repeated freeze/thaw cycles.

Store at 4°C for frequent use.

Aliquot and store at -20°C for 24 months.

Stability Test: The thermal stability is described by the loss rate. The loss rate was determined by accelerated thermal degradation test, that is, incubate the protein at 37°C for 48h, and no

obvious degradation and precipitation were observed. The loss rate is less than 5% within the expiration date under appropriate storage condition.

[IDENTIFICATION]

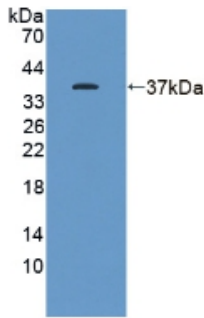
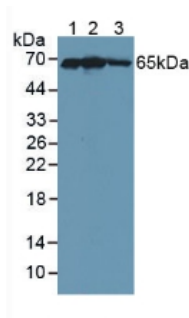
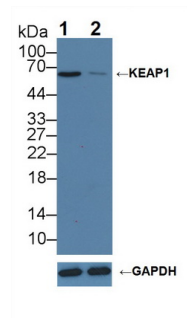


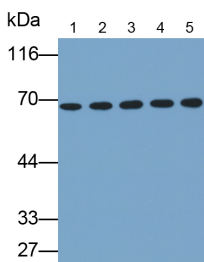
Figure. Western Blot; Sample: Recombinant KEAP1, Human.



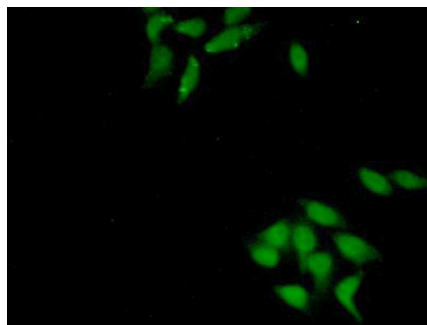
Western Blot; Samples: Lane1: 293T cell lysate; Lane2: HepG2 cell lysate; Lane3: Rat Placenta lysate;
 Primary Ab: 1µg/ml Rabbit Anti-Human KEAP1 Antibody
 Second Ab: 0.2µg/ml HRP-Linked Caprine Anti-Rabbit IgG Polyclonal Antibody
 (Catalog: SAA544Rb19)



Knockout Varification:
 Lane 1: Wild-type 293T cell lysate;
 Lane 2: KEAP1 knockout 293T cell lysate;
 Predicted MW: 70kd
 Observed MW: 65kd
 Primary Ab: 1µg/ml Rabbit Anti-Human KEAP1 Antibody
 Second Ab: 0.2µg/mL HRP-Linked Caprine Anti-Rabbit IgG Polyclonal Antibody
 (Catalog: SAA544Rb19)



Western Blot; Samples: Lane1: Mouse Lung lysate; Lane2: Mouse Cerebrum lysate; Lane3: Mouse Placenta lysate; Lane4: Mouse Kidney lysate; Lane5: NIH/3T3 cell lysate;



FITC staining on IF;
 Samples: Human HepG2 Cells;
 Primary Ab: 20µg/ml Rabbit Anti-Human KEAP1 Antibody
 Second Ab: 1µg/ml FITC-Linked

Primary Ab: 0.1µg/ml Rabbit Anti-
Human KEAP1 Antibody

Second Ab: 0.2µg/ml HRP-Linked
Caprine Anti-Rabbit IgG Polyclonal
Antibody

(Catalog: SAA544Rb19)

Caprine Anti-Rabbit IgG Polyclonal
Antibody

(Catalog: SAA544Rb18)

[IMPORTANT NOTE]

The kit is designed for research use only, we will not be responsible for any issue if the kit was used in clinical diagnostic or any other procedures.