

PAD710Hu01

**Polyclonal Antibody to Killer Cell Immunoglobulin Like Receptor 2DL5 (KIR2DL5)****Organism Species: Homo sapiens (Human)****Instruction manual**

FOR IN VITRO USE AND RESEARCH USE ONLY  
NOT FOR USE IN CLINICAL DIAGNOSTIC PROCEDURES

---

---

9th Edition (Revised in Jul, 2013)

**[ PRODUCT INFORMATION ]****Immunogen:** KIR2DL5, Human**Clonality:** Polyclonal**Host:** Rabbit**Immunoglobulin Type:** IgG**Purification:** Affinity Chromatography.**Applications:** WB, ICC, IHC-P, IHC-F, ELISA**Concentration:** 200µg/mL**UOM:** 100µg**[ IMMUNOGEN INFORMATION ]****Immunogen:** Recombinant KIR2DL5 (His22~Ile375) expressed in *E.coli*.**Accession No.:** RPD710Hu01**Sequence:** The target protein is fused with two N-terminal Tags, His-tag and T7-tag and its sequence is listed below.

MGSSHHHHHH SSGLVPRGSH MASMTGGQQM GRGS- HEGGQDKPL LSAWPSAVVP  
RGGHVTLPCR SRLGFTIFSL YKEDGVPVPE LYNKIFWKSI LMGPVTPAHA GTYRCRGSH  
RSPIEWSAPS NPLVIVVTGL FGKPSLSAQP GPTVRTGENV TLSCSSRSSF DMYHLSREGR  
AHEPRLPAVP SVNGTFQADF PLGPATHGGT YTCFGSLHDS PYEWSDPSPD LLVSVTGNS  
SSSSPTEPS SKTGIRRHLH ILIGTSVAII LFIILFFLL HCCSNKKNA AVMDQEPAGD  
RTVNRESDDD QDPQEVTYAQ LDHCVFTQTK ITSPSQRPKT PPTDTTMYME LPNAKPRSL  
PAHKHHSQAL RGSSRETTAL SQNRVASSHV PAAGI

**[ ANTIBODY SPECIFICITY ]**

The antibody is a rabbit polyclonal antibody raised against KIR2DL5. It has been selected for its ability to recognize KIR2DL5 in immunohistochemical staining and western blotting.

**[ APPLICATIONS ]**

Western blotting: 1:50-400

Immunocytochemistry in formalin fixed cells: 1:50-500

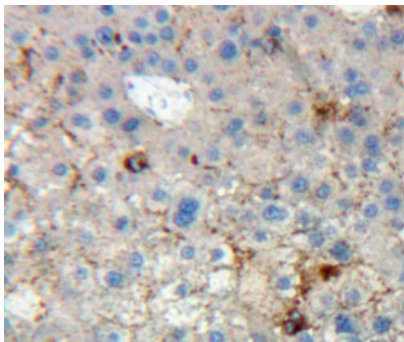
Immunohistochemistry in formalin fixed frozen section: 1:50-500

Immunohistochemistry in paraffin section: 1:10-100

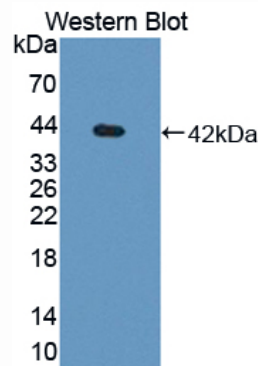
Enzyme-linked Immunosorbent Assay: 1:100-200

Optimal working dilutions must be determined by end user.

## [ **IMAGES** ]



Used in DAB staining on formalin fixed  
paraffin-embedded liver tissue



Used in Western Blot, Sample:  
Recombinant KIR2DL5, Human

## [ **CONTENTS** ]

**Form & Buffer:** Supplied as solution form in PBS, pH7.4, containing 0.02%  $\text{NaN}_3$ , 50% glycerol.

## [ **QUALITY CONTROL** ]

**Content:** The quality control contains recombinant KIR2DL5 (His22~Ile375) disposed in loading buffer.

**Usage:** 10uL per well when 3,3'-Diaminobenzidine(DAB) as the substrate.  
5uL per well when used in enhanced chemiluminescent (ECL).

**Note:** The quality control is specifically manufactured as the positive control. Not used for other purposes.

**Loading Buffer:** 100mM Tris(pH8.8), 2% SDS, 200mM NaCl, 50% glycerol, BPB 0.01%,  $\text{NaN}_3$  0.02%.

## [ **STORAGE** ]

Store at 4°C for frequent use. Stored at -20°C to -80°C in a manual defrost freezer for one year without detectable loss of activity. Avoid repeated freeze-thaw cycles.