

PAC559Hu01

Polyclonal Antibody to Kisspeptin 1 (KISS1)

Organism Species: *Homo sapiens* (Human)

Instruction manual

FOR RESEARCH USE ONLY

NOT FOR USE IN CLINICAL DIAGNOSTIC PROCEDURES

12th Edition (Revised in Aug, 2016)

[PROPERTIES]

Source: Polyclonal antibody preparation

Host: Rabbit

Purification: Antigen-specific affinity chromatography followed by Protein A affinity chromatography

Traits: Liquid

Concentration: 0.41mg/mL

UOM: 100ul

Applications: WB; IHC; ICC; IP.

[IMMUNOGEN]

Immunogen: Recombinant KISS1 (Glu20~Gly138) expressed in *E.coli*

Accession No.: RPC559Hu01

[APPLICATIONS]

Western blotting: 0.5-2µg/mL;1:200-800

Immunohistochemistry: 5-20µg/mL;1:20-80

Immunocytochemistry: 5-20µg/mL;1:20-80

Optimal working dilutions must be determined by end user.

[FORMULATION]

Form & Buffer: Supplied as solution form in PBS, pH7.4, containing 0.02% NaN₃, 50% glycerol.

[STORAGE AND STABILITY]

Storage: Avoid repeated freeze/thaw cycles.

Store at 4°C for frequent use.

Aliquot and store at -20°C for 12 months.

Stability Test: The thermal stability is described by the loss rate. The loss rate was determined by accelerated thermal degradation test, that is, incubate the protein at 37°C for 48h, and no obvious degradation and precipitation were observed. The loss rate is less than 5% within the

expiration date under appropriate storage condition.

[IDENTIFICATION]

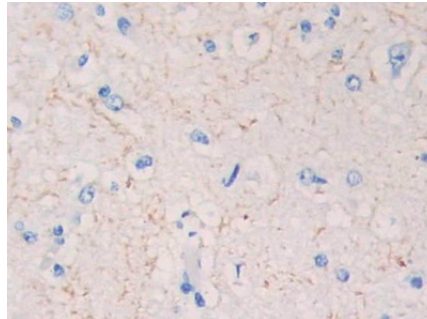
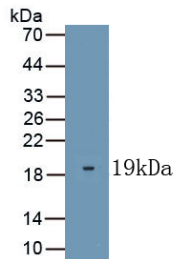


Figure. Western Blot; Sample:
Recombinant KISS1, Human.

DAB staining on IHC-P; Samples:
Human Cerebrum Tissue; Primary Ab:
20µg/ml Rabbit Anti-Human KISS1

[IMPORTANT NOTE]

The kit is designed for research use only, we will not be responsible for any issue if the kit was used in clinical diagnostic or any other procedures.