



PAC166Rb51
Polyclonal Antibody
To Major Histocompatibility Complex Class II DR Alpha (MHCDRa)
Organism Species: Oryctolagus cuniculus (Rabbit)
Instruction manual

FOR IN VITRO USE AND RESEARCH USE ONLY
NOT FOR USE IN CLINICAL DIAGNOSTIC PROCEDURES

12th Edition (Revised in Aug, 2016)

[PROPERTIES]

Source: Polyclonal antibody preparation

Host: Cavia

Purification: Antigen-specific Affinity Chromatography.

Traits: Liquid

Concentration: 200µg/mL

UOM: 100µg

Applications: WB; IHC; ICC; IP.

[IMMUNOGEN]

Immunogen: Recombinant MHCDRa (Ala26~Cys221) expressed in *E.coli*.

Accession No.: RPC166Rb01

[APPLICATIONS]

Western blotting: 0.5-5µg/mL

Immunohistochemistry: 5-20µg/mL

Immunocytochemistry: 5-20µg/mL

Optimal working dilutions must be determined by end user.

[FORMULATION]

Form & Buffer: Supplied as solution form in 0.01M PBS, pH7.4, containing 0.05% Proclin-300, 50% glycerol.

[STORAGE AND STABILITY]

Storage: Avoid repeated freeze/thaw cycles.

Store at 4°C for frequent use.

Aliquot and store at -20°C for 12 months.

Stability Test: The thermal stability is described by the loss rate. The loss rate was determined by accelerated thermal degradation test, that is, incubate the protein at 37°C for 48h, and no obvious degradation and precipitation were observed. The loss rate is less than 5% within the expiration date under appropriate storage condition.

[IDENTIFICATION]

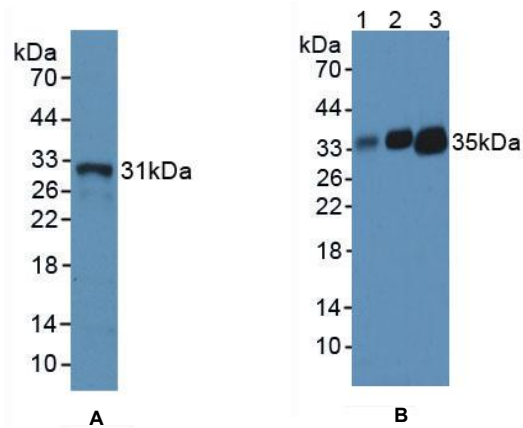


Figure 1. Western Blot

A. Sample: Recombinant MHC DR α , Rabbit

B. Lane1: Rabbit Spleen Tissue

Lane2: Rabbit Lymph Tissue

Lane3: Rabbit Thymus Tissue

Primary Ab: 3 μ g/mL Cavia Anti-Rabbit MHC DR α Ab

Second Ab: 1:5000 Dilution of HRP-Linked Rabbit

Anti-Guinea IgG Antibody (Catalog: SAA544Gu09)