

**PAA553Mu01**

**Polyclonal Antibody to Matrix Metalloproteinase 9 (MMP9)**

**Organism Species: *Mus musculus* (Mouse)**

***Instruction manual***

FOR RESEARCH USE ONLY

NOT FOR USE IN CLINICAL DIAGNOSTIC PROCEDURES

---

13th Edition (Revised in Aug, 2023)

**[ PROPERTIES ]**

**Source:** Polyclonal antibody preparation

**Host:** Rabbit

**Purification:** Antigen-specific affinity chromatography followed by Protein A affinity chromatography

**Traits:** Liquid

**Concentration:** 0.5mg/mL

**UOM:** 100µL

**Cross Reactivity:** Human

**Applications:** WB; ICC/IF

**[ IMMUNOGEN ]**

**Immunogen:** Recombinant MMP9 (Ser225~Asp390) expressed in *E.coli*

**Accession No.:** RPA553Mu01

**[ APPLICATIONS ]**

Western blotting: 0.01-2µg/mL;

Immunofluorescence:5-20µg/mL;

Optimal working dilutions must be determined by end user.

**[ FORMULATION ]**

**Form & Buffer:** Supplied as solution form in 0.01M PBS, pH7.4, containing 0.05% Proclin-300, 50% glycerol.

**[ STORAGE AND STABILITY ]**

**Storage:** Avoid repeated freeze/thaw cycles.

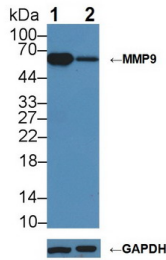
Store at 4°C for frequent use.

Aliquot and store at -20°C for 24 months.

**Stability Test:** The thermal stability is described by the loss rate. The loss rate was determined by accelerated thermal degradation test, that is, incubate the protein at 37°C for 48h, and no obvious degradation and precipitation were observed. The loss rate is less than 5% within the

expiration date under appropriate storage condition.

**[ IDENTIFICATION ]**



Knockout Verification:

Lane 1: Wild-type Jurkat cell lysate;

Lane 2: MMP9 knockout Jurkat cell lysate;

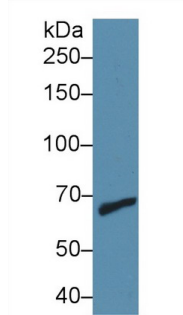
Predicted MW: 81kDa

Observed MW: 65kDa

Primary Ab: 1µg/ml Rabbit Anti-Mouse MMP9 Antibody

Second Ab: 0.2µg/mL HRP-Linked Caprine Anti-Rabbit IgG Polyclonal Antibody

(Catalog: SAA544Rb19)



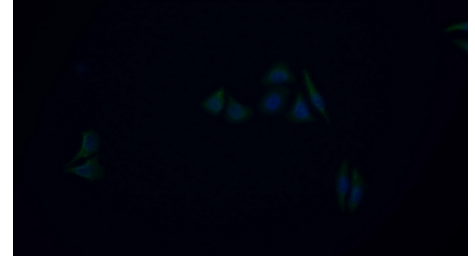
Western Blot; Sample: Human Jurkat cell lysate;

Primary Ab: 1µg/mL Rabbit Anti-Mouse MMP9 Antibody

Second Ab: 0.2µg/mL HRP-Linked Caprine Anti-Rabbit IgG Polyclonal

Antibody

(Catalog: SAA544Rb19)



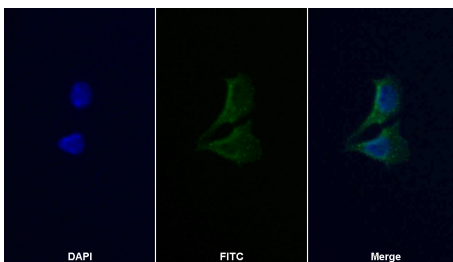
FITC staining on IF;

Samples: Human HepG2 cell;

Primary Ab: 20µg/mL Rabbit Anti-Mouse MMP9 Antibody

Second Ab: 1.5µg/mL FITC-Linked Caprine Anti-Rabbit IgG Polyclonal Antibody

(Catalog: SAA544Rb18)



FITC staining on IF; Sample: HepG2 cell

Primary Ab: 20µg/mL Rabbit Anti-Mouse MMP9 Antibody

Second Ab: 2µg/mL FITC-Linked Caprine Anti-Rabbit IgG Polyclonal

Antibody (Catalog: SAA544Rb11)

**[ IMPORTANT NOTE ]**

The kit is designed for research use only, we will not be responsible for any issue if the kit was used in clinical diagnostic or any other procedures.