

**PAB445Hu01**  
**Polyclonal Antibody**  
**To Mitogen Activated Protein Kinase Scaffold Protein 1 (MAPKSP1)**  
**Organism Species: Homo sapiens (Human)**  
***Instruction manual***

FOR IN VITRO USE AND RESEARCH USE ONLY  
NOT FOR USE IN CLINICAL DIAGNOSTIC PROCEDURES

---

---

9th Edition (Revised in Jul, 2013)

### **[ PRODUCT INFORMATION ]**

**Immunogen:** MAPKSP1, Human

**Clonality:** Polyclonal

**Host:** Rabbit

**Immunoglobulin Type:** IgG

**Purification:** Affinity Chromatography.

**Applications:** WB, ICC, IHC-P, IHC-F, ELISA

**Concentration:** 200µg/mL

**UOM:** 100µg

### **[ IMMUNOGEN INFORMATION ]**

**Immunogen:** Recombinant MAPKSP1 (Met1~Ser124) expressed in *E.coli*.

**Accession No.:** RPB445Hu01

**Sequence:** The target protein is fused with two N-terminal Tags, His-tag and T7-tag and its sequence is listed below.

MGSSHHHHHH SSGLVPRGSH MASMTGGQQM GRGSEF- MADDLKRFLY KKLPSVEGLH  
AIVVSDRDGV PVIKVANDNA PEHALRPGFL STFALATDQG SKLGLSKNKS IICYNTYQV  
VQFNRLPLVV SFIASSANT GLIVSLEKEL APLFEELRQV VEVS

### **[ ANTIBODY SPECIFICITY ]**

The antibody is a rabbit polyclonal antibody raised against MAPKSP1. It has been selected for its ability to recognize MAPKSP1 in immunohistochemical staining and western blotting.

### **[ APPLICATIONS ]**

Western blotting: 1:100-400

Immunocytochemistry in formalin fixed cells: 1:100-500

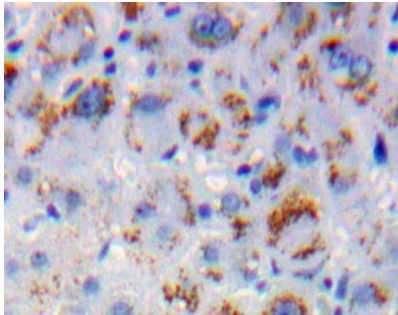
Immunohistochemistry in formalin fixed frozen section: 1:100-500

Immunohistochemistry in paraffin section: 1:50-200

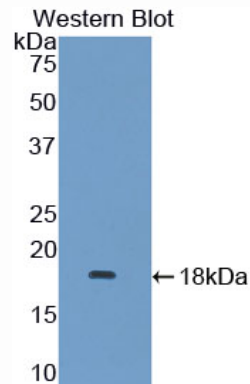
Enzyme-linked Immunosorbent Assay: 1:100-200

Optimal working dilutions must be determined by end user.

## [ IMAGES ]



Used in DAB staining on formalin fixed  
paraffin-embedded Liver tissue



Used in Western Blot, Sample:  
Recombinant MAPKSP1, Human

## [ CONTENTS ]

**Form & Buffer:** Supplied as solution form in PBS, pH7.4, containing 0.02%  $\text{NaN}_3$ , 50% glycerol.

## [ QUALITY CONTROL ]

**Content:** The quality control contains recombinant MAPKSP1 (Met1~Ser124) disposed in loading buffer.

**Usage:** 10uL per well when 3,3'-Diaminobenzidine(DAB) as the substrate.  
5uL per well when used in enhanced chemiluminescent (ECL).

**Note:** The quality control is specifically manufactured as the positive control. Not used for other purposes.

**Loading Buffer:** 100mM Tris(pH8.8), 2% SDS, 200mM NaCl, 50% glycerol, BPB 0.01%,  $\text{NaN}_3$  0.02%.

## [ STORAGE ]

Store at 4°C for frequent use. Stored at -20°C to -80°C in a manual defrost freezer for one year without detectable loss of activity. Avoid repeated freeze-thaw cycles.