

**PAC248Hu01**

**Polyclonal Antibody to Multiple Endocrine Neoplasia I (MEN1)**

**Organism Species: Homo sapiens (Human)**

***Instruction manual***

FOR IN VITRO USE AND RESEARCH USE ONLY  
NOT FOR USE IN CLINICAL DIAGNOSTIC PROCEDURES

---

12th Edition (Revised in Aug, 2016)

**[ PROPERTIES ]**

**Source:** Polyclonal antibody preparation

**Host:** Rabbit

**Purification:** Antigen-specific affinity chromatography

**Traits:** Liquid

**Concentration:** 200µg/mL

**UOM:** 50µg

**Applications:** WB; IHC; ICC; IP.

**[ IMMUNOGEN ]**

**Immunogen:** Recombinant MEN1 (Gly219~Pro395) expressed in E.coli

**Accession No.:** RPC248Hu01

**[ APPLICATIONS ]**

Western blotting: 0.5-2µg/mL

Immunohistochemistry: 5-20µg/mL

Immunocytochemistry: 5-20µg/mL

Optimal working dilutions must be determined by end user.

**[ FORMULATION ]**

**Form & Buffer:** Supplied as solution form in 0.01M PBS, pH7.4, containing 0.05% Proclin-300, 50% glycerol.

**[ STORAGE AND STABILITY ]**

**Storage:** Avoid repeated freeze/thaw cycles.

Store at 4°C for frequent use.

Aliquot and store at -20°C for 12 months.

**Stability Test:** The thermal stability is described by the loss rate. The loss rate was determined by accelerated thermal degradation test, that is, incubate the protein at 37°C for 48h, and no obvious degradation and precipitation were observed. The loss rate is less than 5% within the expiration date under appropriate storage condition.

**[ IDENTIFICATION ]**

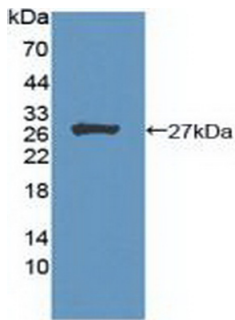


Figure. Western Blot; Sample: Recombinant MEN1, Human.

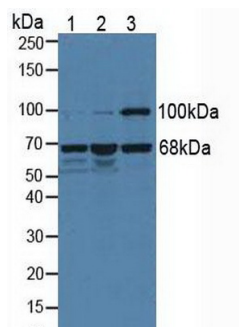


Figure. Western Blot; Sample: Lane1: Porcine Liver Tissue; Lane2: Porcine Kidney Tissue; Lane3: Human HeLa Cells.

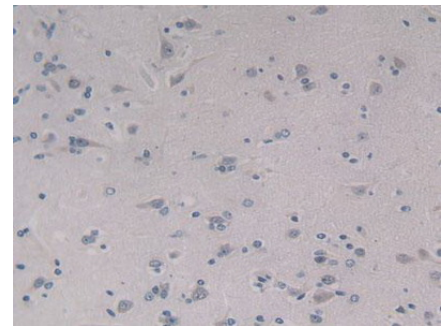


Figure. DAB staining on IHC-P; Samples: Human Brain Tissue.

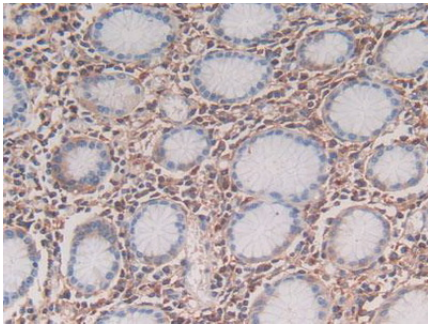


Figure. DAB staining on IHC-P; Samples: Human Stomach Tissue.

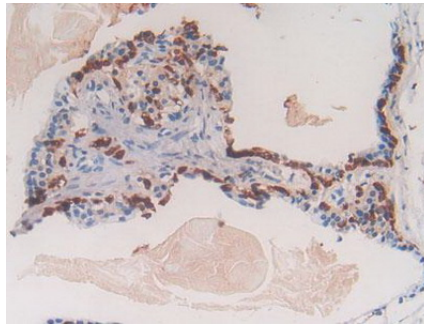


Figure. DAB staining on IHC-P; Samples: Human Pancreas Tissue.