

PAH574Hu01

Polyclonal Antibody to N-Acetylgalactosaminidase Alpha (NAGa)

Organism Species: *Homo sapiens (Human)*

Instruction manual

FOR RESEARCH USE ONLY

NOT FOR USE IN CLINICAL DIAGNOSTIC PROCEDURES

13th Edition (Revised in Aug, 2023)

[PROPERTIES]

Source: Polyclonal antibody preparation

Host: Rabbit

Purification: Antigen-specific affinity chromatography followed by Protein A affinity chromatography

Traits: Liquid

Concentration: 0.5mg/mL

UOM: 10µg(20µL)

Cross Reactivity: Rat

Applications: WB; IHC; ICC; IP.

[IMMUNOGEN]

Immunogen: Recombinant NAGa (Leu18~Asp217) expressed in *E.coli*

Accession No.: RPH574Hu01

[APPLICATIONS]

Western blotting: 0.01-2µg/mL;

Immunohistochemistry: 5-20µg/mL;

Immunocytochemistry: 5-20µg/mL;

Optimal working dilutions must be determined by end user.

[FORMULATION]

Form & Buffer: Supplied as solution form in 0.01M PBS, pH7.4, containing 0.05% Proclin-300, 50% glycerol.

[STORAGE AND STABILITY]

Storage: Avoid repeated freeze/thaw cycles.

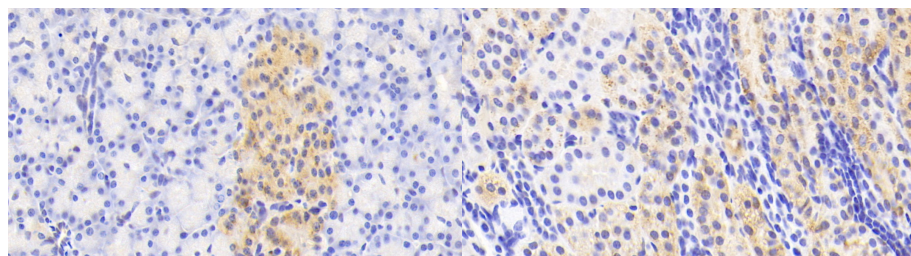
Store at 4°C for frequent use.

Aliquot and store at -20°C for 24 months.

Stability Test: The thermal stability is described by the loss rate. The loss rate was determined by accelerated thermal degradation test, that is, incubate the protein at 37°C for 48h, and no

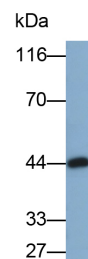
obvious degradation and precipitation were observed. The loss rate is less than 5% within the expiration date under appropriate storage condition.

[IDENTIFICATION]

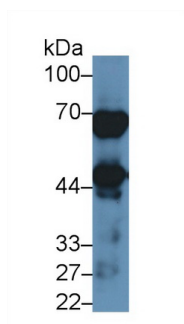


DAB staining on IHC-P; Samples:
Human Pancreas Tissue; Primary Ab:
20 μ g/ml Rabbit Anti-Human NAGa
Antibody Second Ab: 2 μ g/mL HRP-
Linked Caprine Anti-Rabbit IgG
Polyclonal Antibody (Catalog:
SAA544Rb19)

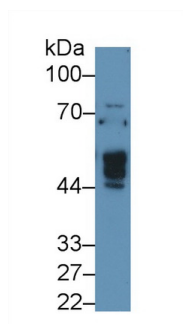
DAB staining on IHC-P;
Samples: Human Kidney Tissue;
Primary Ab: 20 μ g/ml Rabbit Anti-
Human NAGa Antibody
Second Ab: 2 μ g/mL HRP-Linked
Caprine Anti-Rabbit IgG Polyclonal
Antibody
(Catalog: SAA544Rb19)



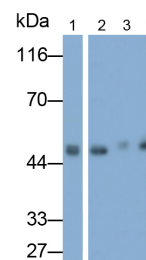
Western Blot; Sample: Rat Cerebrum
lysate
Primary Ab: 0.1 μ g/ml Rabbit Anti-
Human NAGa Antibody
Second Ab: 0.2 μ g/ml HRP-Linked
Caprine Anti-Rabbit IgG Polyclonal
Antibody
(Catalog: SAA544Rb19)



Western Blot; Sample: Human Lung
lysate;
Primary Ab: 1 μ g/ml Rabbit Anti-Human
NAGa Antibody
Second Ab: 0.2 μ g/mL HRP-Linked
Caprine Anti-Rabbit IgG Polyclonal
Antibody
(Catalog: SAA544Rb19)



Western Blot; Sample: Human 293T
cell lysate;
Primary Ab: 1 μ g/ml Rabbit Anti-Human
NAGa Antibody
Second Ab: 0.2 μ g/mL HRP-Linked
Caprine Anti-Rabbit IgG Polyclonal
Antibody
(Catalog: SAA544Rb19)



Western Blot; Samples: Lane1: U2OS
cell lysate; Lane2: U87MG cell lysate;
Lane3: SH-SY5Y cell lysate; Lane4: SK-
N-SH cell lysate;
Primary Ab: 0.2 μ g/ml Rabbit Anti-
Human NAGa Antibody
Second Ab: 0.2 μ g/ml HRP-Linked
Caprine Anti-Rabbit IgG Polyclonal
Antibody

[IMPORTANT NOTE]

The kit is designed for research use only, we will not be responsible for any issue if the kit was used in clinical diagnostic or any other procedures.