

**PAB916Hu01**

**Polyclonal Antibody to Phosphatidylserine Receptor (PSR)**

**Organism Species: *Homo sapiens (Human)***

***Instruction manual***

**FOR RESEARCH USE ONLY**

**NOT FOR USE IN CLINICAL DIAGNOSTIC PROCEDURES**

---

13th Edition (Revised in Aug, 2023)

## **[ PROPERTIES ]**

**Source:** Polyclonal antibody preparation

**Host:** Rabbit

**Purification:** Antigen-specific affinity chromatography followed by Protein A affinity chromatography

**Traits:** Liquid

**Concentration:** 0.5mg/mL

**UOM:** 20µL

**Cross Reactivity:** Mouse;Rat

**Applications:** WB

## **[ IMMUNOGEN ]**

**Immunogen:** Recombinant PSR (Met1~Glu334) expressed in *E.coli*

**Accession No.:** RPB916Hu01

## **[ APPLICATIONS ]**

Western blotting: 0.01-2µg/mL

Immunohistochemistry: 5-20µg/mL

Immunocytochemistry: 5-20µg/mL

Optimal working dilutions must be determined by end user.

## **[ FORMULATION ]**

**Form & Buffer:** Supplied as solution form in PBS, pH7.4, containing 0.02% NaN<sub>3</sub>, 50% glycerol.

## **[ STORAGE AND STABILITY ]**

**Storage:** Avoid repeated freeze/thaw cycles.

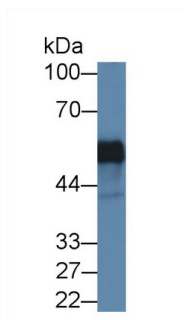
Store at 4°C for frequent use.

Aliquot and store at -20°C for 24 months.

**Stability Test:** The thermal stability is described by the loss rate. The loss rate was determined by accelerated thermal degradation test, that is, incubate the protein at 37°C for 48h, and no

obvious degradation and precipitation were observed. The loss rate is less than 5% within the expiration date under appropriate storage condition.

## [ IDENTIFICATION ]



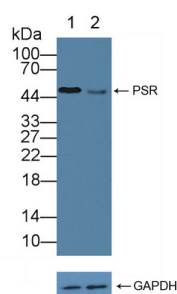
Western Blot; Sample: Human K562  
cell lysate;

Primary Ab: 1µg/ml Rabbit Anti-Human  
PSR Antibody

Second Ab: 0.2µg/mL HRP-Linked

Caprine Anti-Rabbit IgG Polyclonal  
Antibody

(Catalog: SAA544Rb19)



Knockout Varification:

Lane 1: Wild-type HeLa cell lysate;

Lane 2: PSR knockout HeLa cell lysate;

Predicted MW: 43~48kd

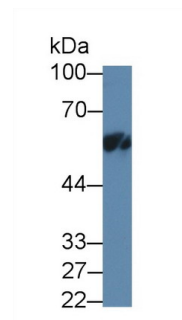
Observed MW: 50kd

Primary Ab: 1µg/ml Rabbit Anti-Human  
PSR Antibody

Second Ab: 0.2µg/mL HRP-Linked  
Caprine Anti-Rabbit IgG Polyclonal

Antibody

(Catalog: SAA544Rb19)



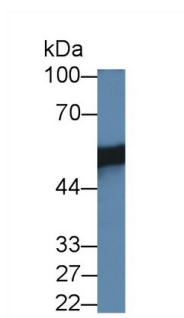
Western Blot; Sample: Human HeLa cell  
lysate;

Primary Ab: 1µg/ml Rabbit Anti-Human  
PSR Antibody

Second Ab: 0.2µg/mL HRP-Linked

Caprine Anti-Rabbit IgG Polyclonal  
Antibody

(Catalog: SAA544Rb19)

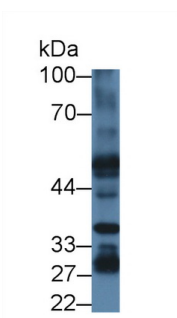


Western Blot; Sample: Human HepG2  
cell lysate;

Primary Ab: 1µg/ml Rabbit Anti-Human  
PSR Antibody

Second Ab: 0.2µg/mL HRP-Linked

Caprine Anti-Rabbit IgG Polyclonal



Western Blot; Sample: Mouse Liver  
lysate;

Primary Ab: 1µg/ml Rabbit Anti-Human  
PSR Antibody

Second Ab: 0.2µg/mL HRP-Linked

Caprine Anti-Rabbit IgG Polyclonal

Antibody

(Catalog: SAA544Rb19)

Antibody

(Catalog: SAA544Rb19)

**[ IMPORTANT NOTE ]**

The kit is designed for research use only, we will not be responsible for any issue if the kit was used in clinical diagnostic or any other procedures.