

**PAH413Hu01**

**Polyclonal Antibody to Phosphohistidine Phosphatase 1 (PHPT1)**

**Organism Species: *Homo sapiens (Human)***

***Instruction manual***

FOR RESEARCH USE ONLY

NOT FOR USE IN CLINICAL DIAGNOSTIC PROCEDURES

---

13th Edition (Revised in Aug, 2023)

### **[ PROPERTIES ]**

**Source:** Polyclonal antibody preparation

**Host:** Rabbit

**Purification:** Antigen-specific affinity chromatography followed by Protein A affinity chromatography

**Traits:** Liquid

**Concentration:** 0.5mg/ml

**UOM:** 100µl

**Cross Reactivity:** Mouse,Rat

**Applications:** WB,IHC,ICC/IF

### **[ IMMUNOGEN ]**

**Immunogen:** Recombinant PHPT1 (Met1~Tyr125) expressed in *E.coli*

**Accession No.:** RPH413Hu01

### **[ APPLICATIONS ]**

Western blotting: 0.01-2µg/mL;

Immunohistochemistry: 5-20µg/mL;

Immunocytochemistry: 5-20µg/mL;

Optimal working dilutions must be determined by end user.

### **[ FORMULATION ]**

**Form & Buffer:** Supplied as solution form in 0.01M PBS, pH7.4, containing 0.05% Proclin-300, 50% glycerol.

### **[ STORAGE AND STABILITY ]**

**Storage:** Avoid repeated freeze/thaw cycles.

Store at 4°C for frequent use.

Aliquot and store at -20°C for 24 months.

**Stability Test:** The thermal stability is described by the loss rate. The loss rate was determined by accelerated thermal degradation test, that is, incubate the protein at 37°C for 48h, and no

obvious degradation and precipitation were observed. The loss rate is less than 5% within the expiration date under appropriate storage condition.

**[ IDENTIFICATION ]**

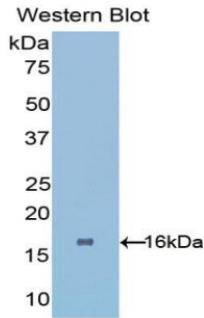
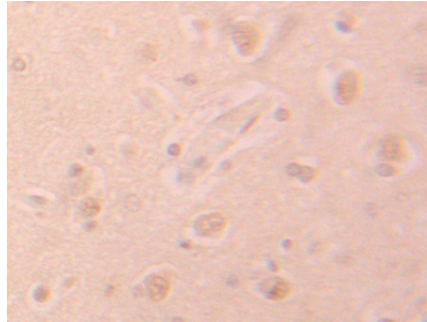
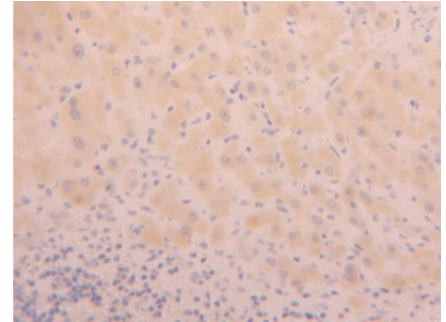


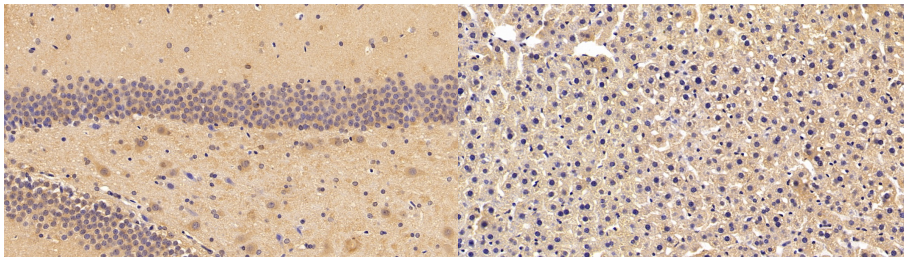
Figure. Western Blot; Sample: Recombinant PHPT1, Human.



DAB staining on IHC-P; Samples: Human Brain Tissue; Primary Ab: 20µg/ml Rabbit Anti-Human PHPT1 Antibody Second Ab: 2µg/mL HRP-Linked Caprine Anti-Rabbit IgG Polyclonal Antibody (Catalog: SAA544Rb19)

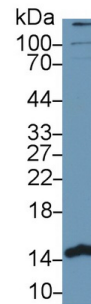


DAB staining on IHC-P; Samples: Human Liver Tissue; Primary Ab: 20µg/ml Rabbit Anti-Human PHPT1 Antibody Second Ab: 2µg/mL HRP-Linked Caprine Anti-Rabbit IgG Polyclonal Antibody (Catalog: SAA544Rb19)

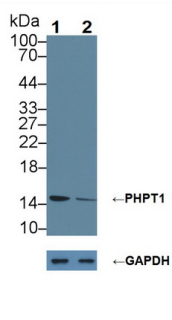


DAB staining on IHC-P; Sample: Rat Cerebrum Tissue; Primary Ab: 20ug/ml Rabbit Anti-Human PHPT1 Antibody Second Ab: 2µg/mL HRP-Linked Caprine Anti-Rabbit IgG Polyclonal Antibody (Catalog: SAA544Rb19)

DAB staining on IHC-P; Sample: Rat Liver Tissue; Primary Ab: 20ug/ml Rabbit Anti-Human PHPT1 Antibody Second Ab: 2µg/mL HRP-Linked Caprine Anti-Rabbit IgG Polyclonal Antibody (Catalog: SAA544Rb19)



Western Blot; Sample: MCF7 cell lysate; Primary Ab: 1µg/ml Rabbit Anti-Human PHPT1 Antibody Second Ab: 0.2µg/mL HRP-Linked Caprine Anti-Rabbit IgG Polyclonal Antibody (Catalog: SAA544Rb19) Selected



Knockout Verification:

Lane 1: Wild-type 293T cell lysate;  
Lane 2: PHPT1 knockout 293T cell lysate;

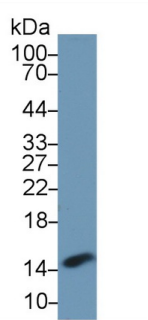
Predicted MW: 14kd

Observed MW: 15kd

Primary Ab: 1µg/ml Rabbit Anti-Human PHPT1 Antibody

Second Ab: 0.2µg/mL HRP-Linked Caprine Anti-Rabbit IgG Polyclonal Antibody

(Catalog: SAA544Rb19)

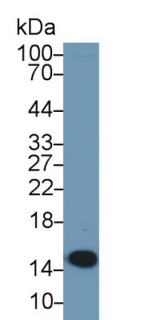


Western Blot; Sample: A549 cell lysate; Western Blot; Sample: 293T cell lysate;

Primary Ab: 1µg/ml Rabbit Anti-Human PHPT1 Antibody

Second Ab: 0.2µg/mL HRP-Linked Caprine Anti-Rabbit IgG Polyclonal Antibody

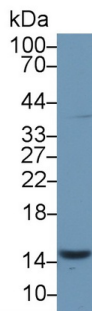
(Catalog: SAA544Rb19) Selected



Primary Ab: 1µg/ml Rabbit Anti-Human PHPT1 Antibody

Second Ab: 0.2µg/mL HRP-Linked Caprine Anti-Rabbit IgG Polyclonal Antibody

(Catalog: SAA544Rb19) Selected

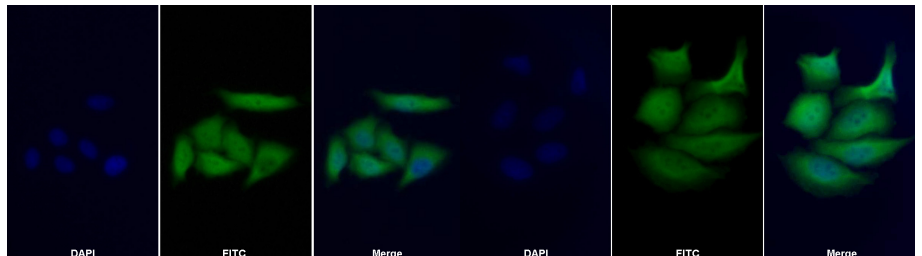


Western Blot; Sample: Mouse Kidney lysate;

Primary Ab: 1µg/ml Rabbit Anti-Human PHPT1 Antibody

Second Ab: 0.2µg/mL HRP-Linked Caprine Anti-Rabbit IgG Polyclonal Antibody

(Catalog: SAA544Rb19) Selected



FITC staining on IF;

Samples: Human MCF7 cell;  
Primary Ab: 20µg/ml Rabbit Anti-Human PHPT1 Antibody  
Second Ab: 1.5µg/ml FITC-Linked Caprine Anti-Rabbit IgG Polyclonal Antibody  
(Catalog: SAA544Rb18)

FITC staining on IF;

Sample: MCF7 cell  
Primary Ab: 20µg/ml Rabbit Anti-Human PHPT1 Antibody  
Second Ab: 2µg/ml FITC-Linked Caprine Anti-Rabbit IgG Polyclonal Antibody  
(Catalog: SAA544Rb11)

**[ IMPORTANT NOTE ]**

The kit is designed for research use only, we will not be responsible for any issue if the kit was used in clinical diagnostic or any other procedures.