

**PAA576Hu01**

**Polyclonal Antibody to Phospholipase A2 Activating Protein (PLAP)**

**Organism Species: *Homo sapiens* (Human)**

***Instruction manual***

FOR RESEARCH USE ONLY

NOT FOR USE IN CLINICAL DIAGNOSTIC PROCEDURES

---

13th Edition (Revised in Aug, 2023)

**[ PROPERTIES ]**

**Source:** Polyclonal antibody preparation

**Host:** Rabbit

**Purification:** Antigen-specific affinity chromatography followed by Protein A affinity chromatography

**Traits:** Liquid

**Concentration:** 500µg/mL

**UOM:** 1

**Cross Reactivity:** N/A

**Applications:** WB,IHC,ICC/IF

**[ IMMUNOGEN ]**

**Immunogen:** Recombinant PLAP (Glu162~Ala312) expressed in *E.coli*

**Accession No.:** RPA576Hu01

**[ APPLICATIONS ]**

Western blotting: 0.01-2µg/mL

Immunocytochemistry in formalin fixed cells: 5-20µg/mL

Immunohistochemistry in formalin fixed frozen section: 5-20µg/mL

Immunohistochemistry in paraffin section: 5-20µg/mL

Enzyme-linked Immunosorbent Assay: 0.05-2µg/mL

Optimal working dilutions must be determined by end user.

**[ FORMULATION ]**

**Form & Buffer:** Supplied as solution form in 0.01M PBS, pH7.4, containing 0.05% Proclin-300, 50% glycerol.

**[ STORAGE AND STABILITY ]**

**Storage:** Avoid repeated freeze/thaw cycles.

Store at 4°C for frequent use.

Aliquot and store at -20°C for 24 months.

**Stability Test:** The thermal stability is described by the loss rate. The loss rate was determined by accelerated thermal degradation test, that is, incubate the protein at 37°C for 48h, and no obvious degradation and precipitation were observed. The loss rate is less than 5% within the expiration date under appropriate storage condition.

**[ IDENTIFICATION ]**

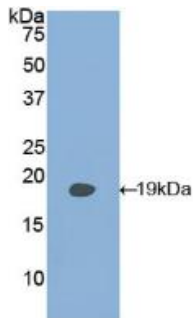
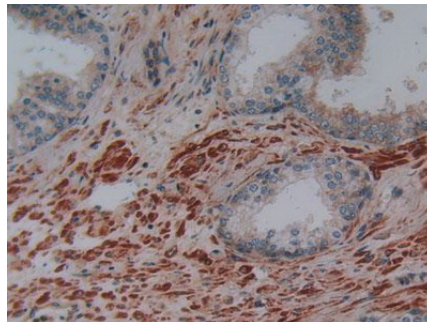
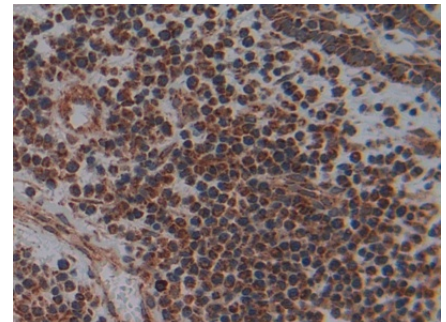


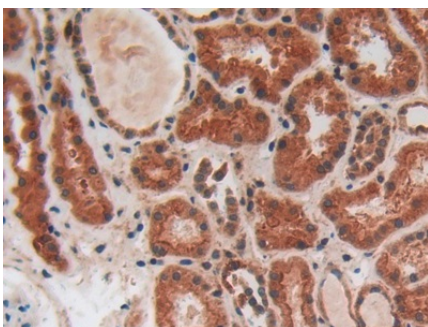
Figure. Western Blot; Sample: Recombinant PLAA, Human.



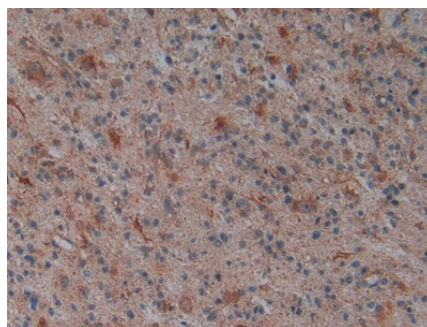
DAB staining on IHC-P;  
 Samples: Human Prostate Gland Tissue;  
 Primary Ab: 10µg/ml Rabbit Anti-Human PLAA Antibody  
 Second Ab: 2µg/mL HRP-Linked Caprine Anti-Rabbit IgG Polyclonal Antibody  
 (Catalog: SAA544Rb19)



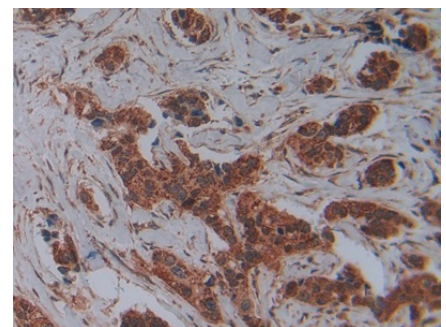
DAB staining on IHC-P;  
 Samples: Human Skin cancer Tissue;  
 Primary Ab: 10µg/ml Rabbit Anti-Human PLAA Antibody  
 Second Ab: 2µg/mL HRP-Linked Caprine Anti-Rabbit IgG Polyclonal Antibody  
 (Catalog: SAA544Rb19)



DAB staining on IHC-P;  
 Samples: Human Kidney Tissue;  
 Primary Ab: 10µg/ml Rabbit Anti-Human PLAA Antibody  
 Second Ab: 2µg/mL HRP-Linked Caprine Anti-Rabbit IgG Polyclonal

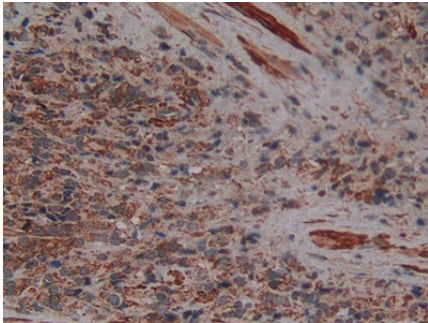


DAB staining on IHC-P;  
 Samples: Human Glioma Tissue;  
 Primary Ab: 10µg/ml Rabbit Anti-Human PLAA Antibody  
 Second Ab: 2µg/mL HRP-Linked Caprine Anti-Rabbit IgG Polyclonal



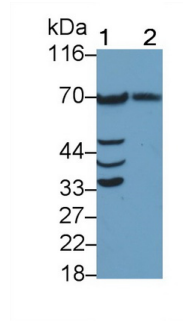
DAB staining on IHC-P;  
 Samples: Human Breast cancer Tissue;  
 Primary Ab: 10µg/ml Rabbit Anti-Human PLAA Antibody  
 Second Ab: 2µg/mL HRP-Linked Caprine Anti-Rabbit IgG Polyclonal

Antibody  
(Catalog: SAA544Rb19)



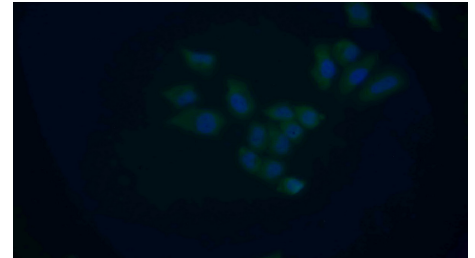
DAB staining on IHC-P;  
Samples: Human Prostate cancer  
Tissue;  
Primary Ab: 10µg/ml Rabbit Anti-  
Human PLAA Antibody  
Second Ab: 2µg/mL HRP-Linked  
Caprine Anti-Rabbit IgG Polyclonal  
Antibody  
(Catalog: SAA544Rb19)

Antibody  
(Catalog: SAA544Rb19)



Western Blot; Sample: Lane1: HeLa cell  
lysate; Lane2: MCF7 cell lysate  
Primary Ab: 0.1µg/ml Rabbit Anti-  
Human PLAP Antibody  
Second Ab: 0.2µg/mL HRP-Linked  
Caprine Anti-Rabbit IgG Polyclonal  
Antibody  
(Catalog: SAA544Rb19)

Antibody  
(Catalog: SAA544Rb19)



FITC staining on IF;  
Samples: Human MCF7 cell;  
Primary Ab: 20µg/ml Rabbit Anti-  
Human PLAA Antibody  
Second Ab: 1.5µg/ml FITC-Linked  
Caprine Anti-Rabbit IgG Polyclonal  
Antibody  
(Catalog: SAA544Rb18)

### [ **IMPORTANT NOTE** ]

The kit is designed for research use only, we will not be responsible for any issue if the kit was used in clinical diagnostic or any other procedures.