

PAB530Hu01

Polyclonal Antibody to Platelet Membrane Glycoprotein IV (GP4)

Organism Species: Homo sapiens (Human)

Instruction manual

FOR IN VITRO USE AND RESEARCH USE ONLY

NOT FOR USE IN CLINICAL DIAGNOSTIC PROCEDURES

9th Edition (Revised in Jul, 2013)

[PRODUCT INFORMATION]

Immunogen: GP4, Human

Clonality: Polyclonal

Host: Rabbit

Immunoglobulin Type: IgG

Purification: Affinity Chromatography.

Applications: WB, ICC, IHC-P, IHC-F, ELISA

Concentration: 200µg/mL

UOM: 100µg

[IMMUNOGEN INFORMATION]

Immunogen: Recombinant GP4 (Leu187~Asn428) expressed in *E.coli*.

Accession No.: RPB530Hu01

Sequence: The target protein is fused with two N-terminal Tags, His-tag and T7-tag and its sequence is listed below.

MGSSHHHHHH SSSLVPRGSH MASMTGGQQM GRGSEF- LSLV PYPVTTTVGL
FYPYNNTADG VYKVFNGKDN ISKVAIIDTY KGKRNLSEYWE SHCDMINGTD AASFPPFVEK
SQVLQFFSSD ICRSIYAVFE SDVNLKGIPV YRFVLPSKAF ASPVENPDNY CFCTEKIISK
NCTSYGVLDI SKCKEGRPVY ISLPHFLYAS PDVSEPIDGL NPNEEEHRTY LDIEPITGFT
LQFAKRLQVN LLVKPSEKIQ VLKLNLRNYI VPILWLNETG TIGDEKAN

[ANTIBODY SPECIFICITY]

The antibody is a rabbit polyclonal antibody raised against GP4. It has been selected for its ability to recognize GP4 in immunohistochemical staining and western blotting.

[APPLICATIONS]

Western blotting: 1:100-400

Immunocytochemistry in formalin fixed cells: 1:100-500

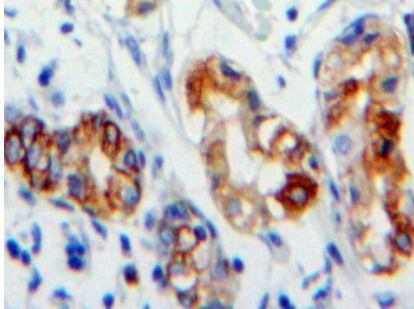
Immunohistochemistry in formalin fixed frozen section: 1:100-500

Immunohistochemistry in paraffin section: 1:50-200

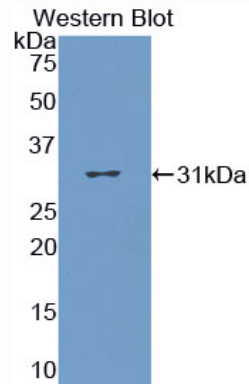
Enzyme-linked Immunosorbent Assay: 1:100-200

Optimal working dilutions must be determined by end user.

[IMAGES]



Used in DAB staining on formalin fixed paraffin-embedded Stomach tissue



Used in Western Blot, Sample: Recombinant GP4, Human

[CONTENTS]

Form & Buffer: Supplied as solution form in PBS, pH7.4, containing 0.02% NaN₃, 50% glycerol.

[QUALITY CONTROL]

Content: The quality control contains recombinant GP4 (Leu187~Asn428) disposed in loading buffer.

Usage: 10uL per well when 3,3'-Diaminobenzidine(DAB) as the substrate.
5uL per well when used in enhanced chemiluminescent (ECL).

Note: The quality control is specifically manufactured as the positive control. Not used for other purposes.

Loading Buffer: 100mM Tris(pH8.8), 2% SDS, 200mM NaCl, 50% glycerol, BPB 0.01%, NaN₃ 0.02%.

[STORAGE]

Store at 4°C for frequent use. Stored at -20°C to -80°C in a manual defrost freezer for one year without detectable loss of activity. Avoid repeated freeze-thaw cycles.