

PAG277Hu01

Polyclonal Antibody to Proteasome 26S Subunit, ATPase 2 (PSMC2)**Organism Species: Homo sapiens (Human)*****Instruction manual***

FOR IN VITRO USE AND RESEARCH USE ONLY

NOT FOR USE IN CLINICAL DIAGNOSTIC PROCEDURES

9th Edition (Revised in Jul, 2013)

[PRODUCT INFORMATION]**Immunogen:** PSMC2, Human**Clonality:** Polyclonal**Host:** Rabbit**Immunoglobulin Type:** IgG**Purification:** Affinity Chromatography.**Applications:** WB, ICC, IHC-P, IHC-F, ELISA**Concentration:** 200µg/mL**UOM:** 100µg**[IMMUNOGEN INFORMATION]****Immunogen:** Recombinant PSMC2 (Met1~Asn433) expressed in *E.coli*.**Accession No.:** RPG277Hu01**Sequence:** The target protein is fused with two N-terminal Tags, His-tag and T7-tag and its sequence is listed below.

MGSSHHHHHH SSSLVPRGSH MASMTGGQQM GRGSEF- MPDYLGADQR KTKEDKDDK
PIRALDEGDI ALLKTYGQST YSRQIKQVED DIQQLLKKIN ELTGIKESDT GLAPPALWDL
AADKQTLQSE QPLQVARCTK IINADSEDPK YIINVKQFAK FVVDLSDQVA PTDIEEGMRV
GVDRNKYQIH IPLPPKIDPT VTMMQVEEKP DVTYSDVGGC KEQIEKLREV VETPLLHPER
FVNLGIEPPK GVLLFGPPGT GKTLCARAVA NRTDACFIRV IGSELVQKYV GEGARMVREL
FEMARTKKAC LIFFDEIDAI GGARFDDGAG GDNEVQRTML ELINQLDGFDP RGNIKVLM
TNRPDTL DPA LMRPGRLDRK IEFSLPDLEG RTHIFKIHAR SMSVERDIRF ELLARLCPNS
TGAEIRSVCT EAGMFAIRAR RKIATEKDFL EAVNKVIKSY AKFSATPRYM TYN

[ANTIBODY SPECIFICITY]

The antibody is a rabbit polyclonal antibody raised against PSMC2. It has been selected for its ability to recognize PSMC2 in immunohistochemical staining and western blotting.

[APPLICATIONS]

Western blotting: 1:100-400

Immunocytochemistry in formalin fixed cells: 1:100-500

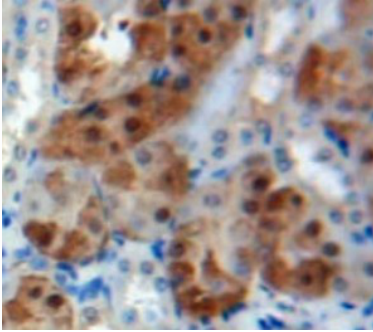
Immunohistochemistry in formalin fixed frozen section: 1:100-500

Immunohistochemistry in paraffin section: 1:50-200

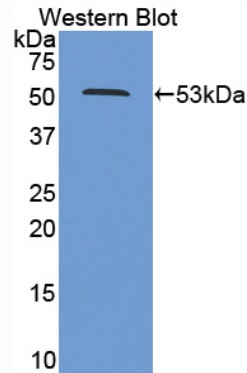
Enzyme-linked Immunosorbent Assay: 1:100-200

Optimal working dilutions must be determined by end user.

[IMAGES]



Used in DAB staining on formalin fixed
paraffin-embedded kidney tissue



Used in Western Blot, Sample:
Recombinant PSMC2, Human

[CONTENTS]

Form & Buffer: Supplied as solution form in PBS, pH7.4, containing 0.02% NaN₃, 50% glycerol.

[QUALITY CONTROL]

Content: The quality control contains recombinant PSMC2 (Met1~Asn433) disposed in loading buffer.

Usage: 10uL per well when 3,3'-Diaminobenzidine(DAB) as the substrate.
5uL per well when used in enhanced chemiluminescent (ECL).

Note: The quality control is specifically manufactured as the positive control. Not used for other purposes.

Loading Buffer: 100mM Tris(pH8.8), 2% SDS, 200mM NaCl, 50% glycerol, BPB 0.01%, NaN₃ 0.02%.

[STORAGE]

Store at 4°C for frequent use. Stored at -20°C to -80°C in a manual defrost freezer for one year without detectable loss of activity. Avoid repeated freeze-thaw cycles.