

**PAD774Hu01**

**Polyclonal Antibody to Protein Disulfide Isomerase A4 (PDIA4)**

**Organism Species: *Homo sapiens (Human)***

***Instruction manual***

FOR RESEARCH USE ONLY

NOT FOR USE IN CLINICAL DIAGNOSTIC PROCEDURES

---

13th Edition (Revised in Aug, 2023)

### [ **PROPERTIES** ]

**Source:** Polyclonal antibody preparation

**Host:** Rabbit

**Purification:** Antigen-specific affinity chromatography followed by Protein A affinity chromatography

**Traits:** Liquid

**Concentration:** 0.5mg/mL

**UOM:** 100µl

**Cross Reactivity:** Porcine

**Applications:** WB,IHC

### [ **IMMUNOGEN** ]

**Immunogen:** Recombinant PDIA4 (Phe505~Thr636) expressed in *E.coli*

**Accession No.:** RPD774Hu01

### [ **APPLICATIONS** ]

Western blotting: 0.5-3µg/mL;

Immunohistochemistry: 5-20µg/mL;

Immunofluorescence:5-20µg/mL;

Optimal working dilutions must be determined by end user.

### [ **FORMULATION** ]

**Form & Buffer:** Supplied as solution form in 0.01M PBS, pH7.4, containing 0.05% Proclin-300, 50% glycerol.

### [ **STORAGE AND STABILITY** ]

**Storage:** Avoid repeated freeze/thaw cycles.

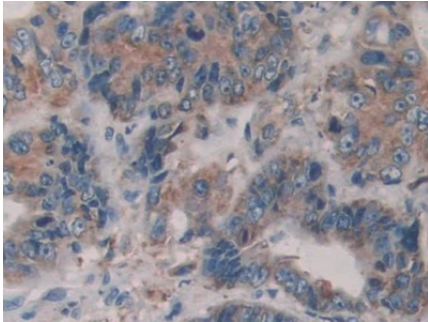
Store at 4°C for frequent use.

Aliquot and store at -20°C for 24 months.

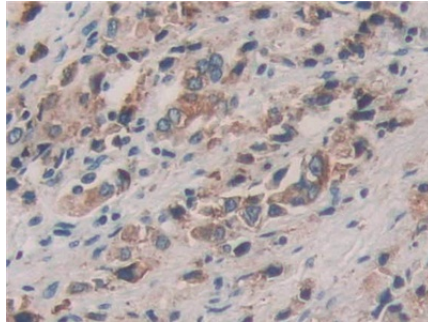
**Stability Test:** The thermal stability is described by the loss rate. The loss rate was determined by accelerated thermal degradation test, that is, incubate the protein at 37°C for 48h, and no

obvious degradation and precipitation were observed. The loss rate is less than 5% within the expiration date under appropriate storage condition.

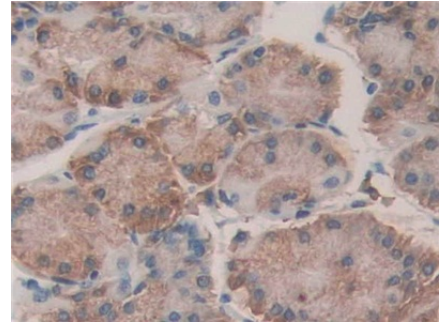
**[ IDENTIFICATION ]**



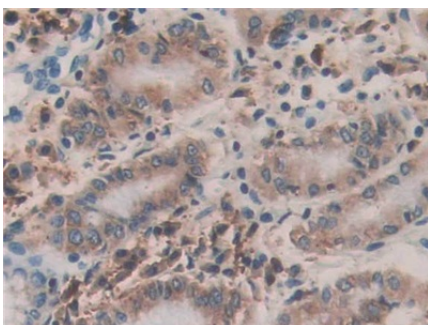
DAB staining on IHC-P;  
 Samples: Human Colorectal cancer Tissue;  
 Primary Ab: 20µg/ml Rabbit Anti-Human PDIA4 Antibody  
 Second Ab: 2µg/mL HRP-Linked Caprine Anti-Rabbit IgG Polyclonal Antibody  
 (Catalog: SAA544Rb19)



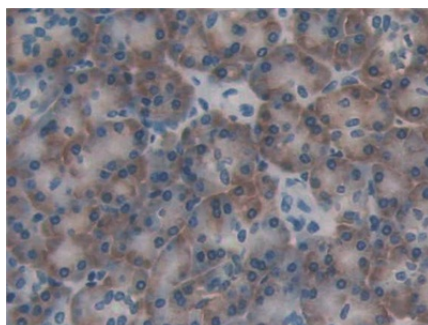
DAB staining on IHC-P;  
 Samples: Human Prostate cancer Tissue;  
 Primary Ab: 20µg/ml Rabbit Anti-Human PDIA4 Antibody  
 Second Ab: 2µg/mL HRP-Linked Caprine Anti-Rabbit IgG Polyclonal Antibody  
 (Catalog: SAA544Rb19)



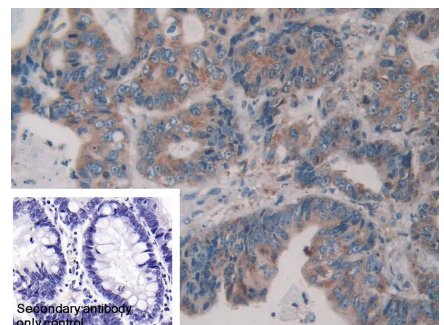
DAB staining on IHC-P;  
 Samples: Human Stomach Tissue;  
 Primary Ab: 20µg/ml Rabbit Anti-Human PDIA4 Antibody  
 Second Ab: 2µg/mL HRP-Linked Caprine Anti-Rabbit IgG Polyclonal Antibody  
 (Catalog: SAA544Rb19)



DAB staining on IHC-P;  
 Samples: Human Stomach cancer Tissue;  
 Primary Ab: 20µg/ml Rabbit Anti-Human PDIA4 Antibody  
 Second Ab: 2µg/mL HRP-Linked Caprine Anti-Rabbit IgG Polyclonal Antibody

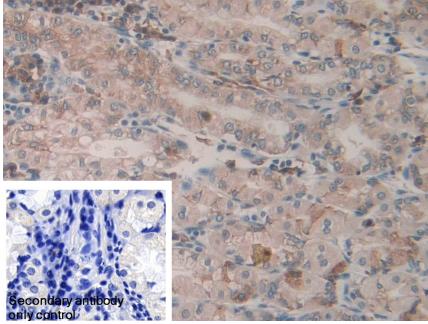


DAB staining on IHC-P;  
 Samples: Human Pancreas Tissue;  
 Primary Ab: 20µg/ml Rabbit Anti-Human PDIA4 Antibody  
 Second Ab: 2µg/mL HRP-Linked Caprine Anti-Rabbit IgG Polyclonal Antibody  
 (Catalog: SAA544Rb19)



DAB staining on IHC-P;  
 Sample: Human Colorectal cancer Tissue  
 Primary Ab: 20µg/ml Rabbit Anti-Human PDIA4 Antibody  
 Control: Used PBS instead of primary antibody  
 Second Ab: 2µg/ml HRP-Linked

(Catalog: SAA544Rb19)



DAB staining on IHC-P;

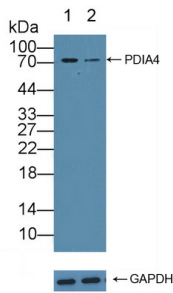
Sample: Human Stomach Tissue

Primary Ab: 20µg/ml Rabbit Anti-Human PDIA4 Antibody

Control: Used PBS instead of primary antibody

Second Ab: 2µg/ml HRP-Linked Caprine Anti-Rabbit IgG Polyclonal Antibody

(Catalog: SAA544Rb19)



Knockout Verification:

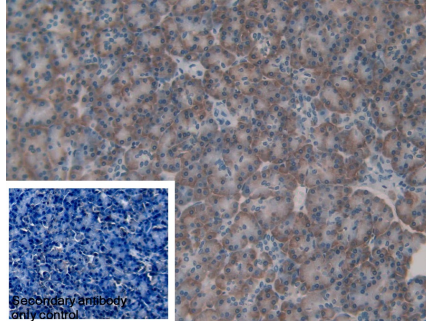
Lane 1: Wild-type HeLa cell lysate;

Lane 2: PDIA4 knockout HeLa cell lysate;

Predicted MW: 73kd

Observed MW: 73kd

Primary Ab: 3µg/ml Rabbit Anti-Human PDIA4 Antibody



DAB staining on IHC-P;

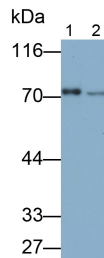
Sample: Human Pancreas Tissue

Primary Ab: 20µg/ml Rabbit Anti-Human PDIA4 Antibody

Control: Used PBS instead of primary antibody

Second Ab: 2µg/ml HRP-Linked Caprine Anti-Rabbit IgG Polyclonal Antibody

(Catalog: SAA544Rb19)



Western Blot; Samples: Lane1: Mouse Liver lysate; Lane2: NIH/3T3 cell lysate;

Primary Ab: 0.1µg/ml Rabbit Anti-Human PDIA4 Antibody

Second Ab: 0.2µg/ml HRP-Linked Caprine Anti-Rabbit IgG Polyclonal

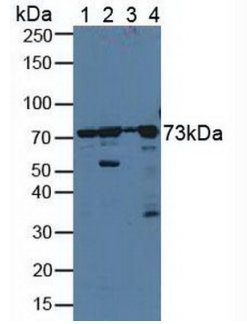
Antibody

(Catalog: SAA544Rb19)

Caprine Anti-Rabbit IgG Polyclonal

Antibody

(Catalog: SAA544Rb19)



Western Blot; Sample: Lane1: HeLa cell

lysate; Lane2: Porcine Liver lysate;

Lane3: Porcine Cerebrum lysate;

Lane4: A431 cell lysate

Primary Ab: 3µg/ml Rabbit Anti-Human PDIA4 Antibody

Second Ab: 0.2µg/mL HRP-Linked Caprine Anti-Rabbit IgG Polyclonal Antibody

(Catalog: SAA544Rb19)

Second Ab: 0.2µg/mL HRP-Linked

Caprine Anti-Rabbit IgG Polyclonal

Antibody

(Catalog: SAA544Rb19)

**[ IMPORTANT NOTE ]**

The kit is designed for research use only, we will not be responsible for any issue if the kit was used in clinical diagnostic or any other procedures.