

PAA439Hu01

Polyclonal Antibody to Protein Kinase C Epsilon (PKCe)

Organism Species: Homo sapiens (Human)

Instruction manual

**FOR IN VITRO USE AND RESEARCH USE ONLY
NOT FOR USE IN CLINICAL DIAGNOSTIC PROCEDURES**

12th Edition (Revised in Aug, 2016)

[PROPERTIES]

Source: Polyclonal antibody preparation

Host: Rabbit

Purification: Antigen-specific Affinity Chromatography.

Traits: Liquid

Concentration: 500µg/mL

UOM: 100µg

Applications: WB; ICC; IHC-P; IHC-F; ELISA.

[IMMUNOGEN]

Immunogen: Recombinant PKCe (Leu403~Asp672) expressed in *E.coli*.

Accession No.: RPA439Hu01

[APPLICATIONS]

Western blotting: 1-5ug/ml

Immunocytochemistry in formalin fixed cells: 5-20ug/ml

Immunohistochemistry in formalin fixed frozen section: 5-20ug/ml

Immunohistochemistry in paraffin section: 5-20ug/ml

Enzyme-linked Immunosorbent Assay: 0.05-2ug/ml

Optimal working dilutions must be determined by end user.

[FORMULATION]

Form & Buffer: Supplied as solution form in 0.01M PBS, pH7.4, containing 0.05% Proclin-300, 50% glycerol.

[STORAGE AND STABILITY]

Storage: Avoid repeated freeze/thaw cycles.

Store at 4°C for frequent use.

Aliquot and store at -20°C for two years.

Stability Test: The thermal stability is described by the loss rate. The loss rate was determined by accelerated thermal degradation test, that is, incubate the protein at 37°C for 48h, and no obvious degradation and precipitation were

observed. The loss rate is less than 5% within the expiration date under appropriate storage condition.

[IDENTIFICATION]

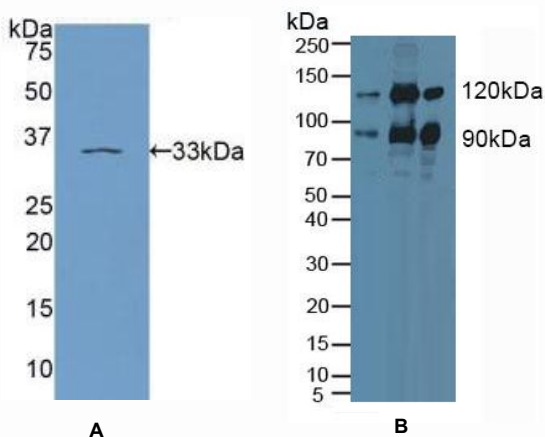


Figure 1. Western Blot

A. Sample: Recombinant PKCε, Human

B. Lane1: Human Hela Cells

Lane2: Mouse Brain Tissue

Lane3: Porcine Brain Tissue

Primary Ab: 3μg/mL Rabbit Anti-Human PKCε Ab

Second Ab: 1:2000 Dilution of HRP-Linked Guinea pig

Anti-Rabbit Ab (Catalog: SAA544Rb59)

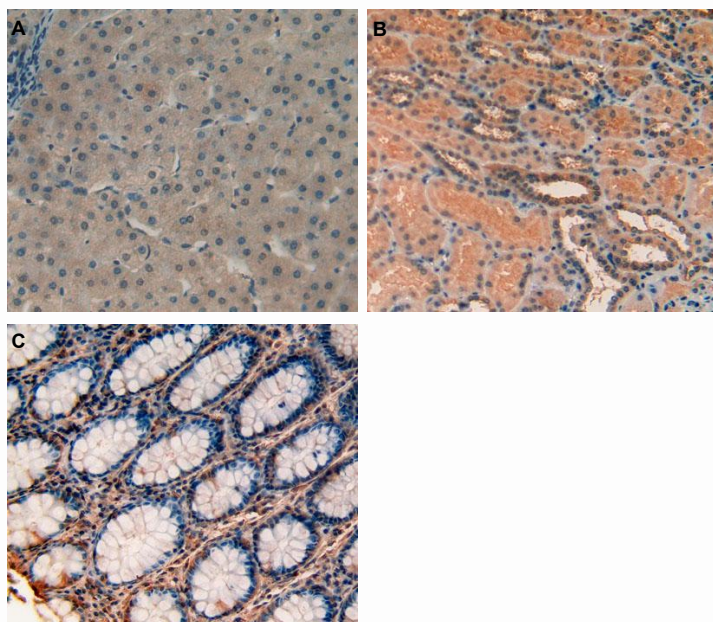


Figure 2. DAB staining on IHC-P

Samples:

A. Human Liver Tissue

B. Human Kidney Tissue

C. Human Rectum Tissue