

PAA776Hu01

Polyclonal Antibody to Pyruvate dehydrogenase alpha 1 (PDHA1)

Organism Species: *Homo sapiens (Human)*

Instruction manual

FOR RESEARCH USE ONLY

NOT FOR USE IN CLINICAL DIAGNOSTIC PROCEDURES

13th Edition (Revised in Aug, 2023)

[PROPERTIES]

Source: Polyclonal antibody preparation

Host: Rabbit

Purification: Antigen-specific affinity chromatography followed by Protein A affinity chromatography

Traits: Liquid

Concentration: 0.5mg/mL

UOM: 100µL

Cross Reactivity: Mouse;Rat;Porcine.

Applications: WB; IHC; ICC; IP; FCM

[IMMUNOGEN]

Immunogen: Recombinant PDHA1 (Phe30~Ser390) expressed in *E.coli*

Accession No.: RPA776Hu01

[APPLICATIONS]

Western blotting: 0.01-2?g/mL

Immunohistochemistry: 5-30?g/mL

Immunocytochemistry: 5-20?g/mL

Flow cytometry: 20?g/mL;

Optimal working dilutions must be determined by end user.

[FORMULATION]

Form & Buffer: Supplied as solution form in PBS, pH7.4, containing 0.02% NaN₃, 50% glycerol.

[STORAGE AND STABILITY]

Storage: Avoid repeated freeze/thaw cycles.

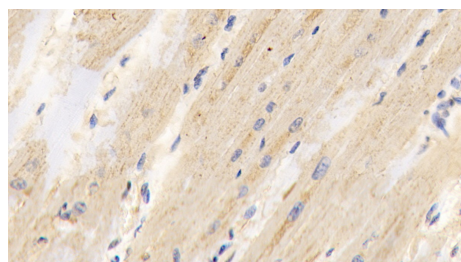
Store at 4°C for frequent use.

Aliquot and store at -20°C for 24 months.

Stability Test: The thermal stability is described by the loss rate. The loss rate was determined

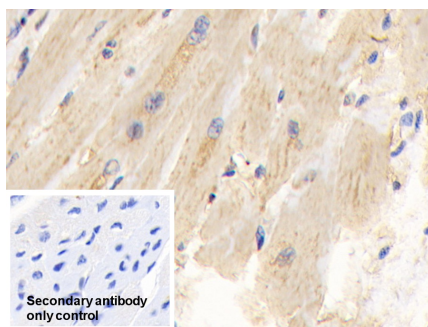
by accelerated thermal degradation test, that is, incubate the protein at 37°C for 48h, and no obvious degradation and precipitation were observed. The loss rate is less than 5% within the expiration date under appropriate storage condition.

[IDENTIFICATION]



DAB staining on IHC-P; Samples:

Human Cardiac Muscle Tissue; Primary Ab: 30µg/ml Rabbit Anti-Human PDHa Antibody Second Ab: 2µg/mL HRP-Linked Caprine Anti-Rabbit IgG Polyclonal Antibody (Catalog: SAA544Rb19)



DAB staining on IHC-P;

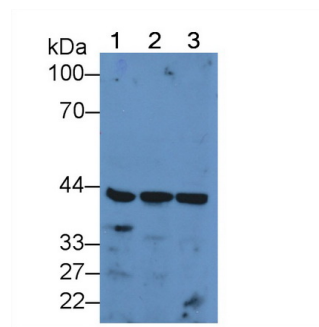
Sample: Human Cardiac Muscle Tissue

Primary Ab: 30µg/ml Rabbit Anti-Human PDHA1 Antibody

Control: Used PBS instead of primary antibody

Second Ab: 2µg/ml HRP-Linked Caprine Anti-Rabbit IgG Polyclonal Antibody

(Catalog: SAA544Rb19)



Western Blot; Sample: Lane1: Human

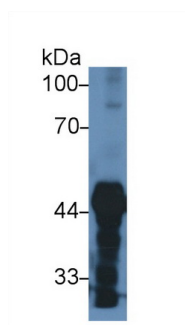
Liver lysate; Lane2: Human Hela cell

lysate; Lane3: Human ECV304 cell

lysate; Primary Ab: 2µg/mL Rabbit Anti-Human PDHa Antibody

Second Ab: 0.2µg/mL HRP-Linked Caprine Anti-Rabbit IgG Polyclonal Antibody

(Catalog: SAA544Rb19)

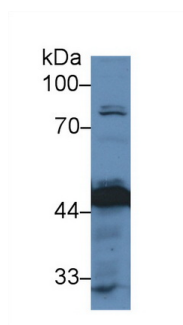


Western Blot; Sample: Mouse

Cerebrum lysate;

Primary Ab: 1µg/ml Rabbit Anti-Human PDHa Antibody

Second Ab: 0.2µg/mL HRP-Linked Caprine Anti-Rabbit IgG Polyclonal

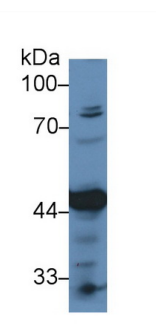


Western Blot; Sample: Human HepG2

cell lysate;

Primary Ab: 1µg/ml Rabbit Anti-Human PDHa Antibody

Second Ab: 0.2µg/mL HRP-Linked Caprine Anti-Rabbit IgG Polyclonal



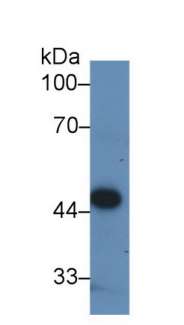
Western Blot; Sample: Human Hela cell

lysate;

Primary Ab: 1µg/ml Rabbit Anti-Human PDHa Antibody

Second Ab: 0.2µg/mL HRP-Linked Caprine Anti-Rabbit IgG Polyclonal

Antibody
(Catalog: SAA544Rb19)



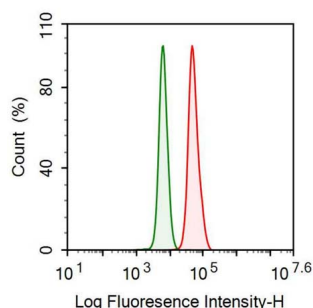
Western Blot; Sample: Human ECV304 cell lysate;

Primary Ab: 1µg/ml Rabbit Anti-Human PDHA1 Antibody

Second Ab: 0.2µg/mL HRP-Linked Caprine Anti-Rabbit IgG Polyclonal

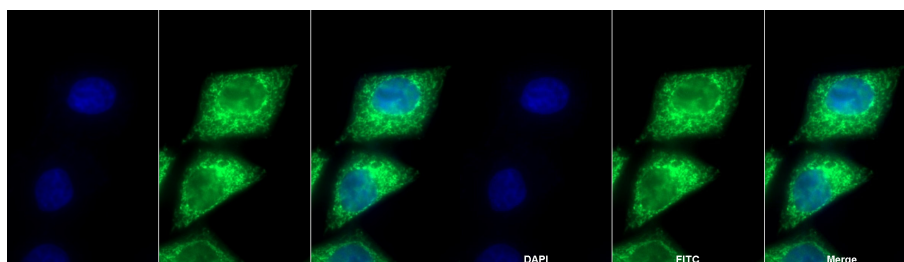
Antibody

(Catalog: SAA544Rb19)



Human Hela cell was fixed with 2% paraformaldehyde (10 min) , permeabilised with 0.1% BSA-Triton X-100, then stained with 20µg/ml rabbit Anti-human PDHA1 Polyclonal Antibody (Catalog PAA776Hu01, red histogram) or Isotype control antibody (Catalog IS067-Rb01, green histogram), followed by 1µg/ml FITC-conjugated Anti-rabbit IgG Secondary Antibody (Catalog SAA544Rb18).

Antibody
(Catalog: SAA544Rb19)



FITC staining on IF;

Sample: Human HepG2 cell;

Primary Ab: 20ug/ml Rabbit Anti-Human PDHA1 Antibody

Second Ab: 2µg/ml FITC-Linked Caprine Anti-Rabbit IgG Polyclonal Antibody

(Catalog: SAA544Rb18)

Antibody
(Catalog: SAA544Rb19)

FITC staining on IF;

Sample: HepG2 cell

Primary Ab: 20µg/ml Rabbit Anti-Human PDHA1 Antibody

Second Ab: 2µg/ml FITC-Linked Caprine Anti-Rabbit IgG Polyclonal Antibody

(Catalog: SAA544Rb11)

[IMPORTANT NOTE]

The kit is designed for research use only, we will not be responsible for any issue if the kit was used in clinical diagnostic or any other procedures.